

Exporting Ideas: Knowledge Flows from Expanding Trade in Goods

Documents de travail

N° 2024-04 – Mars 2024





Institut national de la statistique et des études économiques

2024/04

EXPORTING IDEAS: KNOWLEDGE FLOWS FROM EXPANDING TRADE IN GOODS*

PHILIPPE AGHION[†], ANTONIN BERGEAUD^{*}, TIMOTHÉE GIGOUT[‡],
MATTHIEU LEQUIEN^{**}, MARC MELITZ[§]

06 mars 2024

Département des Études Économiques – Timbre G201
88, avenue Verdier – CS 70058 – 92541 MONTROUGE CEDEX – France
Tél. : 33 (1) 87 69 59 54 – E-mail : d3e-dg@insee.fr – Site Web Insee : <http://www.insee.fr>

*Ces documents de travail ne reflètent pas la position de l'Insee et n'engagent que leurs auteurs.
Working papers do not reflect the position of INSEE but only their author's views*

* We are grateful for useful comments and suggestions to Matthieu Bussière, Gregory Corcos, Jérôme Héricourt, Isabelle Méjean, Andreas Moxnes, Jose De Sousa, Claudia Steinwender and seminar participants at INSEAD, Collège de France, CREST, Harvard, Banque de France, Banca d'Italia, Insee, the AFSE 2021 conference, the 2021 NBER Summer Institute on International Trade, the 2022 BSE Summer Forum and the University of Bologna 2022 Workshop on International Trade and Intellectual Property Rights. This work is supported by a public grant overseen by the French National Research Agency (ANR) as part of the "Investissements d'Avenir" program (reference: ANR-10-EQPX-17 - Centre d'accès sécurisé aux données – CASD)

[†] Collège de France, LSE and INSEAD

^{*} HEC Paris, CEP-LSE and CEPR

[‡] Banque de France and Collège de France

^{**} Insee

[§] Harvard University and NBER

On exporte aussi ses idées : les transferts de connaissances résultant de l'expansion du commerce des biens

Nous examinons l'effet de l'entrée des entreprises françaises sur un nouveau marché d'exportation sur la dynamique des citations de leurs brevets reçues de cette destination. En appliquant une stratégie d'identification de différences de différences avec un plan de traitement échelonné, nous montrons que : (i) l'entrée sur un nouveau marché étranger a un impact significatif sur le flux de citations à long terme ; (ii) l'impact est principalement déterminé par la marge extensive ; (iii) les inventeurs dans les pays de destination brevettent principalement des produits qui ne sont pas directement en concurrence avec ceux de l'entreprise exportatrice ; (iv) l'intensité des retombées diminue avec la distance technologique entre l'entreprise exportatrice et le pays de destination.

Mots clés : Commerce international, retombées, innovation, brevet

Code JEL: O33, O34, O40, F10, F14

Exporting Ideas: Knowledge Flows from Expanding Trade in Goods

We examine the effect of entry by French firms into a new export market on the dynamics of their patents' citations received from that destination. Applying a difference-in-differences identification strategy with a staggered treatment design, we show that: (i) entering a new foreign market has a significant impact on the long-run flow of citations; (ii) the impact is mostly driven by the extensive margin; (iii) inventors in destination countries patent mostly in products that do not directly compete with those of the exporting firm; (iv) the spillover intensity decreases with the technological distance between the exporting firm and the destination.

Keywords : International Trade, Spillover, Innovation, Patent

JEL Code : O33, O34, O40, F10, F14

1 Introduction

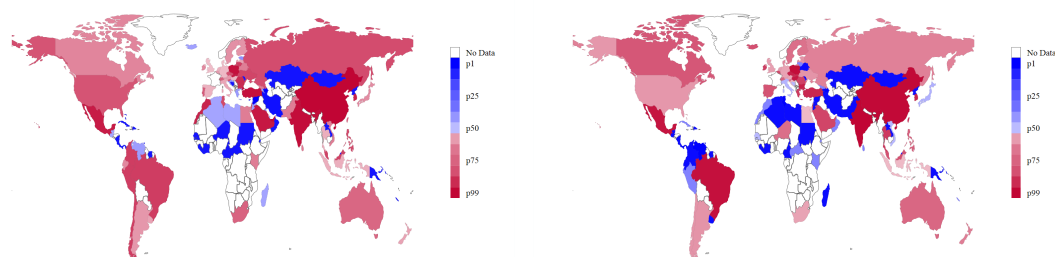
Modern growth theory predicts that international trade should enhance productivity growth for several reasons. First, trade allows potential innovators to sell to a larger market; and by *increasing market size*, trade increases the size of ex-post rents that accrue to successful innovators, thereby encouraging R&D investments. Second, trade *raises competition* in product markets, which in turn encourages innovation that aims to escape competition among the most advanced firms. Third, leaving aside these within-firm impacts on productivity, trade induces selection effects that favor more innovative firms. And finally, trade also induces *knowledge spillovers* that allow producers in recipient countries to catch up with the technological frontier (see [Melitz and Redding, 2021](#) for a review). Using detailed trade and patent data, we focus on this last channel and show that firms export more than goods. They also export the ideas and technologies embedded in these goods, which then show up in the form of new innovations developed in the destination country.

To motivate our analysis, we document that the countries to which France exports are closely related to the countries whose patents cite prior French patents. In [Figure 1a](#), we plot the long difference change in the log of the number of French exporters from 1995 to 2012 across countries. In [Figure 1b](#), we plot the long difference change in the log of the number of citations to French patents from 1995 to 2012 across countries. We see that countries experiencing the largest increase in the number of French exporters also experience the largest increase in patent citations to French innovations over the same time period. The regression coefficient between the two long differences is equal to 1.62 (with a standard error of 0.22).

Figure 1: EVOLUTION OF TRADE AND INNOVATION LINKAGES

(a) Number of French Exporters

(b) Patent Citations



Notes: Evolution in the number of French exporters in each country (left-hand side panel) and the number of citations received from each country (right-hand side panel) between 1995 and 2012. Colors correspond to different deciles in the corresponding quantity.

To more directly measure the spillover from the French exporters to a destination to local innovation, we exploit comprehensive patent and French export data

during the 1995-2012 period. For every year and potential export destination, we construct a citation count for each exporters' patents. These citations come from new patents introduced in that year by firms or inventors operating in the destination country. We then investigate how the pattern of a French firm's citation count in a destination changes over time whenever it starts exporting to that destination. Increases in a new exporter's citations represent new patents recorded in that destination subsequent to the exporter's entry in that destination. Those patents citing the French exporter represent a measure of its technological influence in that destination. We use the timing of the exporter's entry into a market relative to its citations in that market to infer a causal relationship between the two.

More specifically, we use a difference-in-differences (DiD) strategy to analyze the dynamic response of patent citations to a French firm's export market entry in a particular year. We rely on a staggered treatment adoption design that exploits the fact that firms enter their export markets at different times. The identifying assumption is the existence of a common trend between entrants and non-entrants: inventors in a foreign country would have cited French entrants at the same rate as non entrants had the French firms not entered the country. To strengthen the plausibility of this assumption, we exploit the high dimensionality of our dataset and incorporate fixed effects for both firm-year and destination-technology field-year to capture common shocks to treated and not yet treated observations. We therefore isolate variations coming from within firm change in the flow of citations across all of its current and future export destinations after absorbing destination effects. Additionally, we address potential weighting issues introduced by conventional estimators in staggered designs by drawing on the latest improvements in DiD estimation methods from [de Chaisemartin and d'Haultfoeuille \(2020\)](#).

Our first finding is that exporting to a new foreign market increases the flow of triadic citations received by the exporter from firms in that market (i.e. citations from a patent belonging to a triadic family, see [OECD, 2009](#)). More precisely, entering a new foreign market has a significant and positive impact on its triadic patents' citations starting three years after export market entry and sharply increasing over time until 11 years after entry at which point citations start petering out. The underlying idea is that entry into this new market raises the visibility of the exporter's technology to domestic firms in the market. Those domestic firms can then more readily generate further innovations that build upon that technology, conditional on the host country's degree of absorptive capacity ([Cohen and Levinthal, 1989](#)). Our second finding is that entering a new foreign market has a greater impact on the extensive margin – the probability of obtaining at least one triadic citations – than the intensive margin – the probability of obtaining many citations.

These findings are robust to many different specification checks: 1) the choice of functional form for the left-hand side citation variable; 2) additional fixed effects; 3) dropping from the sample citations added by the patent office or by the

patent examiner; and 4) restricting our sample to foreign destinations with no foreign direct investment ties with the exporting firm, thus controlling for citations generated by the exporter-owned affiliates toward their parent company.

Our third finding is that new patents in a destination country involve products that do not directly compete with those produced by the French exporter: the spillovers involving non-competing products are significantly higher than those associated with competing products. Finally, we examine how the magnitude of the knowledge spillovers vary with the technological distance between the French exporter and the destination country, as measured by differences in patent quality. We find that the spillover intensity is hump-shaped with a peak when the quality of the new patents in a destination lags slightly behind that of the French exporter. This is consistent with the view that firms in a destination country with substantially lower “absorptive capacity” are unable to take advantage of the exporter’s more advanced technology. At the other end, destinations with the most advanced technologies may find the French exporter’s technology less valuable relative to their own technologies. Conversely, firms situated in countries midway on the technological spectrum seem to gain the most, benefiting from an R&D-enhanced technology transfer from exporting firms, echoing the dual functions of R&D outlined by [Griffith et al. \(2004\)](#).

Our analysis relates to several other strands of literature. There is first the literature on spillovers and international trade. Seminal works by [Coe and Helpman \(1995\)](#) and [Coe et al. \(2009\)](#) demonstrate that a nation’s productivity is intricately linked to the R&D and innovation levels of its trading partners, with the strength of these spillovers intensifying alongside the nation’s trade openness. The use of patent data, especially citation networks as a means to track the international diffusion of innovation, was further advanced by [Jaffe and Trajtenberg \(1999\)](#).¹ Further evidence of the international dimension of such spillovers is provided by [Branstetter \(2001\)](#) and [Keller \(2004\)](#), suggesting a potential link to international trade and globalization. [Keller and Yeaple \(2009\)](#); [Keller \(2010\)](#) and [Aitken and Harrison \(1999\)](#) explore potential mechanisms and highlight the significant role played by firms operating across borders in driving the global distribution of technology and underscore the dual conduits of trade and multinational activity as vectors for these externalities. Our work adds to this discourse by pinpointing a causal effect of exports on the diffusion of innovation in the destination country that operates even in the absence of foreign direct investment.

More closely related to our analysis is [MacGarvie \(2006\)](#), which uses panel data on French manufacturing firms and their export links with eight developed countries to reveal that these firms’ patents more frequently cite patents from countries they import from. The depth of our data, combined with our dynamic estimation method, allows us to thoroughly assess the long-run responses of foreign triadic citations well before and after a firm’s initial export activity. This

¹See also [Eaton and Kortum \(1996\)](#); [Peri \(2005\)](#); [Cotterlaz and Guillouzoic \(2020\)](#).

enables us to uncover the nuanced effects of trade on knowledge dissemination and to more accurately determine the timing and causality of these impacts.²

Our work contributes to the recent body of research on the nexus between trade and innovation. It aligns with studies examining the impact of imports on innovation (Bloom et al., 2016; Autor et al., 2020; Bombardini et al., 2017; Aghion et al., forthcoming) as well as those exploring the relationship between exports and innovation (Lileeva and Trefler, 2010; Aghion et al., 2022). While existing studies primarily focus on the effects of trade in terms of competition and market expansion, our research isolates and quantifies the technological spillovers arising from trade activities.

And lastly, our methodology share similarities with the literature on academia, scientists and citations. Azoulay et al. (2010) and Jaravel et al. (2018) analyze the impact of an inventor’s death on the subsequent innovation and income patterns of the inventor’s surviving coauthors. Waldinger (2011) analyzes the impact of the dismissal of Jewish scientists by the Nazi government in Germany in the 1930s. And Watzinger et al. (2017, 2018) analyze the impact of the mobility of scientists across German universities on local citations to their work. Our paper develops a way to adapt these experimental settings for firms in the context of the analysis of trade and technology spillovers.

The remaining parts of our paper are organized as follows. Section 2 presents the data and details of our empirical strategy. Section 3 presents our main results and performs robustness checks. Section 4 decomposes the spillover across products – separating out products that directly compete with those produced by the French exporter. Section 5 decomposes the spillover across characteristics of the exporter and the destination country, highlighting how the strength of the spillover varies with both the quality of the exporter’s patents and the level of technological development in the destination country.

2 Data and Methodology

2.1 Data

We build a database that covers all French firms and links export, production, and innovation/citation data from 1994 to 2012. Our database is built from three separate sources. First, detailed customs data provide information on French exports by firm, destination country, and product (covering over 10,000 different product categories consistent with 8-digit CN codes).³ From this database, we

²Our analysis uncovers a short-term effect corresponding to a 23% increase from the sample mean, and a long-term effect of up to 107%, as opposed to the 71% short-term increase found in MacGarvie (2006).

³i.e. one extra level of disaggregation compared to HS6 UN Comtrade harmonized data. Customs data are from the *Direction Générale des Douanes et Droits Indirects*.

extract the date of first entry into a foreign market for each firm (using exports in 1993 to infer entry in 1994).

Our second data source is the Insee-DGFiP administrative fiscal dataset (FICUS-FARE). This dataset is drawn from compulsory reporting to fiscal authorities in France, supplemented by further census data collected by Insee. We use this data to assign each firm to a 4-digit (NACE) sector and compute their labor productivity as the ratio of value added over employment in full time equivalent.

Our third data source is the Spring 2016 PATSTAT dataset from the European Patent Office. This dataset contains detailed information on all patent applications from most patent offices worldwide, including information on the network of patent linkages via citations. We use it to measure the French firms' patent stocks and the citations from foreign inventors across countries to French firms' patents and match them using the matching algorithm developed by [Lequien et al. \(2019\)](#) and used in e.g. [Aghion et al. \(2022\)](#), which generates matches between all French firms with more than ten employees and their patent applications. We restrict the set of citations, i.e. new foreign patents citing a French patent, to "triadic citations", that is, a citation from a foreign patent belonging to a family of triadic patents to a French patent. A family of triadic patents is a family of patents (patents related to the same invention but filed in different patent offices) that include publications in the European Patent Office (EPO), the Japan Patent Office (JPO) and the United States Patent and Trademark Office (USPTO). Filing applications in all three of those major patent offices represents a significant cost for the patenting firm. Those patents represent innovations that were deemed valuable enough to warrant the additional protection coverage ([Lanjouw, 1998](#), [Harhoff et al., 2003](#), [Squicciarini et al., 2013](#)).

Patent citations are commonly utilized as indicators of the knowledge flow between entities ([Jaffe and Trajtenberg, 1999](#)). However, not every citation necessarily signifies a knowledge spillover between the owner of the citing patent and the cited one. Instead, it may reflect the patent examiner's awareness of prior art that the inventor was not privy to ([Alcacer and Gittelman, 2006](#)). Within the PATSTAT patent database, citations fall into three primary categories (Figure A.1 in Appendix A): (i) those added by the applicant prior to filing (approximately 34%), (ii) those included during the patent office's initial search process (around 80%), and (iii) those inserted by the examiner (about 0.5%). Yet, even if a citation is not directly added by the applicant, the latter sometimes discloses to the patent office "the trade names and providers of any goods or services in competition with the goods" that inspired the invention. The patent office then finds the relevant patent and adds the citation. In this case, the patent added by the patent office during the search may still reflect knowledge spillovers between patent owners. Nevertheless, we check the robustness of our main result by estimating our baseline model on a sub-sample restricted to citations added by the applicant. We find similar effects that follow the same dynamics with the same order of magnitude.

The patent data also provide us with the main technological field of each

patent as defined by the World Patent Intellectual Property Organisation. This classification assigns the finer International Patent Classification (IPC) codes to 35 large categories - “technological fields” - that balance both size and homogeneity. We use this patent level information to assign a technological field to each firm based on the most frequent field in its stock of patents.

Finally, we identify the French exporters’ foreign affiliates using the Insee LIFI dataset. Specifically, we use the “fichier des entreprises” table to back out the date when a French parent company opens or acquires an affiliate in a foreign country.

We seek to measure the knowledge spillovers from new French exporters-innovators who enter an export destination during our 1995-2012 sample years. There are 6,753 such firms who enter one of 156 destinations during our sample years and own at least one patent. Those firms account for 125,700 patents that have generated 614,847 citations (new patents) in foreign destinations. Those entries represent 139,954 potential knowledge spillover links between a foreign patent and a French firm.

2.2 Identification strategy

We want to measure how a French firm’s entry into a new export market affects its flow of new citations (to its patents) from that destination. The most natural approach is to aggregate our data at the firm-destination level. More specifically, we estimate how a firm f ’s entry into a new export market j affects subsequent citations $Y_{f,j,t}$ in year t to its stock of existing patents received from firms located in that destination j . Our baseline specification is:

$$Y_{f,j,t} = \sum_{k>0} \beta_k \times 1_{E_{f,j}=t-k} + \chi(f, j, t) + \epsilon_{f,j,t}. \quad (1)$$

The generic control function $\chi(f, j, t)$ incorporates characteristics of the firm f and destination market j in year t . In this baseline specification, we use a set of firm-year and destination-technological field-year fixed effects. The main coefficients of interest β_k capture the additional citations that can be linked to firm f ’s export market entry k years before the citation date t (entry in year $t - k$).

We use a DiD estimation with a staggered treatment adoption design, which relies on variation in the year of export market entry for a firm. The identifying assumption is the existence of a common trend between entrants and non-entrants: inventors in a destination j would have cited French entrants at the same rate as non-entrants had the French firms not entered that destination.

Two reasons support this assumption: First, the sample is restricted to innovative active exporters (firms with a positive stock of patents that export during the sample period) and firm-destination pairs that are eventually “treated” by export market entry. Within this relatively more homogeneous sample, we only exploit differences in the *timing* of entry between two or more export destinations for a

given firm. Second, there are no discernible pre-trends linking the entry decision to prior citations.

We implement the [de Chaisemartin and d’Haultfoeuille \(2020\)](#) DiD estimator. This estimation accounts for potential weighting issues that arise with the standard DiD estimator (see for instance [Callaway and Sant’Anna, 2019](#) and [Goodman-Bacon, 2018](#)).⁴ Thus we estimate β_k in equation (1) using:

$$\text{DID}_k = \sum_{t=0}^T \frac{N_t^k}{N_{\text{DID}_k}} \text{DID}_{t,k}, \quad (2)$$

where

$$\text{DID}_{t,k} = \underbrace{\sum_{f,j:E_{f,j}=t-k} \frac{1}{N_t^k} (\overbrace{\tilde{Y}_{f,j,t}}^{\text{Now}} - \overbrace{\tilde{Y}_{f,j,t-k-1}}^{\text{Before}})}_{\text{Treated}} - \underbrace{\sum_{f,j:E_{f,j}>t} \frac{1}{N_t^{nt}} (\overbrace{\tilde{Y}_{f,j,t}}^{\text{Now}} - \overbrace{\tilde{Y}_{f,j,t-k-1}}^{\text{Before}})}_{\text{Not yet Treated}}, \quad (3)$$

where N_t^k denotes the number of firm-destination links treated at date $t - k$ and $N_{\text{DID}_k} = \sum_t N_t^k$. \tilde{Y} is the residualized outcome over a set of fixed effects. In our baseline regression, we include firm-year and destination-technological field-year fixed effects. These capture global innovation shocks in a given market and the firm’s innovation intensity. We compute a relatively large set of lags and leads in order to capture the full evolution of citations to firm f ’s patents following its entry into destination j . We cluster standard errors at the destination-sector level as we expect that entry by French firms is not randomly assigned across those markets. This allows for auto-correlation and correlation of the error terms across exporters in this cluster.

In our baseline, we estimate DID_k with the outcome variables \tilde{Y} measured in levels as the number of triadic citations. Thus, $\Delta\tilde{Y}$ captures the average change for the treated destination-firm pairs relative to the untreated. As opposed to a measure in logs, we do not need to drop observations with zero citation flows. We expect a lower frequency of zeroes from the treated destination following entry. Dropping those observations would bias $\text{DID}_{t,k}$ toward zero. We show that these results are robust to functional form misspecification in Section 3.2 and to the use of various other transformations for the left-hand side variable in Section B.6.

⁴In particular [de Chaisemartin and d’Haultfoeuille \(2020\)](#) show that the coefficients identified by the canonical two-way fixed effect (TWFE) estimator capture a combination of the actual treatment effects and of “weights” effects. In the case of a staggered design, the TWFE mechanically computes negative weights for some periods and groups. In some cases this may result in negative estimated coefficients when the treatment effects are in fact positive. This problem is more acute in the presence of treatment effect heterogeneity, either across groups or across periods. The methodology developed in [de Chaisemartin and d’Haultfoeuille \(2020\)](#), which we follow here, is meant to avoid this problem.

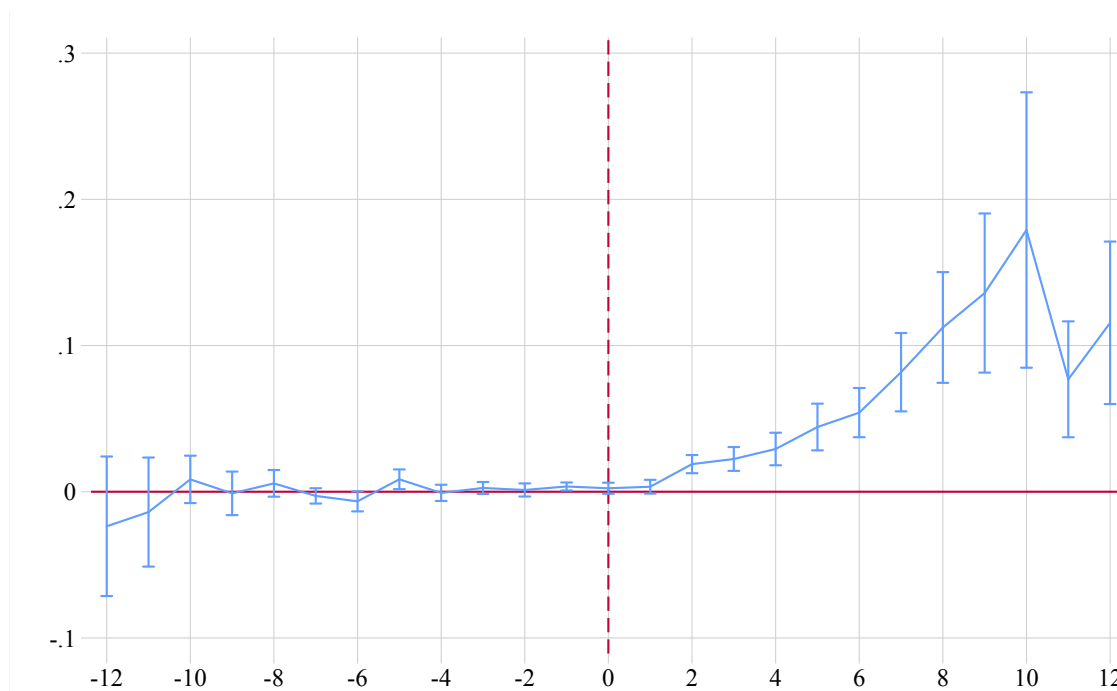
3 Results

3.1 Baseline firm-level results

We estimate the parameters DID_k from Equation (1) and report their values \widehat{DID}_k and associated 99% confidence intervals in Figure 2. Recall that $k = 0$ marks the first year a firm exports to country j . The outcome variable is the count of triadic citations to the French firm's patents. In the regression, we control for destination-technological field-year and for firm-year fixed effects. Standard errors are clustered at the destination-sector level.

As we see in Figure 2, the estimates for the pre-entry coefficients are not significantly different from zero: in other words, there are no pre-trends. Starting 2 years after export market entry, the estimates for the post-entry coefficients are significantly positive, reflecting the time lag for inventors in the destination to build upon the exporter's technology. The triadic citations then steadily and sharply increase over time until they eventually peter out 11 years after entry. This shows that the trade-induced technological spillovers lead to long-lasting bursts of innovation in the destination country.

Figure 2: Baseline estimation of the effect of entry on citations



Notes: This figure presents estimates of the coefficient DID_k from Equation (2). The x-axis represents the value of k , $k = 0$ being the first year the firm exports to country j . 99% error bands, computed with robust standard errors clustered at the destination-sector level, are displayed as blue brackets.

Magnitude Quantitatively, new exporters receive on average an additional 0.067 citations for their patents from that destination during the 12 years after entry (compared to a destination that the firm has not yet entered at that time). This corresponds to a 99.1% increase from the 0.068 mean citation rate in our sample.

To assess the magnitude of the full treatment effect, we compute the sum of coefficients at different horizons, starting from the year of treatment. After 6 years, we find a cumulative coefficient of 0.175. Over this 6 year time window post-entry, a new exporter receives an average of 0.583 citations from that destination, whereas a non-exporter (to that destination) receives an average of 0.408 citations. This corresponds to a 71.1% higher level of citations from the destination country. After 12 years, the cumulative coefficient is 0.876. A new exporter receives an average of 1.692 citations from that destination, whereas the non-exporter receives an average of 0.816 citations. Those results and results for other time horizons are presented in Table B.1 in Appendix B.1.

3.2 Entry and the distribution of citation counts

The effect of export market entry on the number of citations to the new exporter may be driven either by an “extensive margin” effect – entry into a destination induces the exporter’s patents to be cited for the first time in that destination – or it may be driven by an “intensive margin” effect – the exporter’s citations in a destination increase with entry from a positive base level. To quantify those margins, we use the “distribution regression” method developed in Chernozhukov et al. (2013) to estimate the entire conditional distribution of the citation count variable Y . Importantly, this does not require the outcome to have a smooth conditional density as in quantile regressions.

In Figure 3a, each point is estimated using a linear probability model. This corresponds to the effect for the probability of the exporter accumulating more citations than the indicated value (horizontal axis) six years after entry. The fixed effects are the same as in the baseline regression (firm-year and destination-technological field-year) and we once again cluster the standard errors at the destination-sector level (the blue bands show the 99% confidence intervals). The first coefficient corresponds to a regression where the outcome variable is a dummy that is set to one when the citation rate is strictly greater than zero. This is the extensive margin. We find that entry increases the probability of being cited by 0.3 percentage points (p.p.) after 6 years relative to a base probability of 1.4%. The effect is similar for low (below 5)—but positive—citation counts, but then decreases for higher citation counts. Entry increases the probability of receiving more than 10 citations by only 0.12 p.p.; and it increases the probability of receiving more than 20 citations by just 0.05 p.p.. Yet, those lower effects remain significant over the entire distribution of citation counts. We report the full dynamic response for selected citation count thresholds in Appendix B.2. The extensive margin effect on the probability of receiving at least 1 citation increases with time and is

the highest after 8 years (+ 0.7 p.p.). To summarize, export market entry has a much more substantial impact on the extensive margin of citations (the exporter's patent first being cited in the destination) than on the intensive margin (further increases in the exporter's citation counts).

In Figure 3b, we plot the sample cumulative distribution for citations in red. This is computed only on not yet treated observations. The counterfactual distribution is plotted in blue. It is obtained by taking the sample distribution and adding the coefficients from the top panel, thereby including the impact of entry.⁵

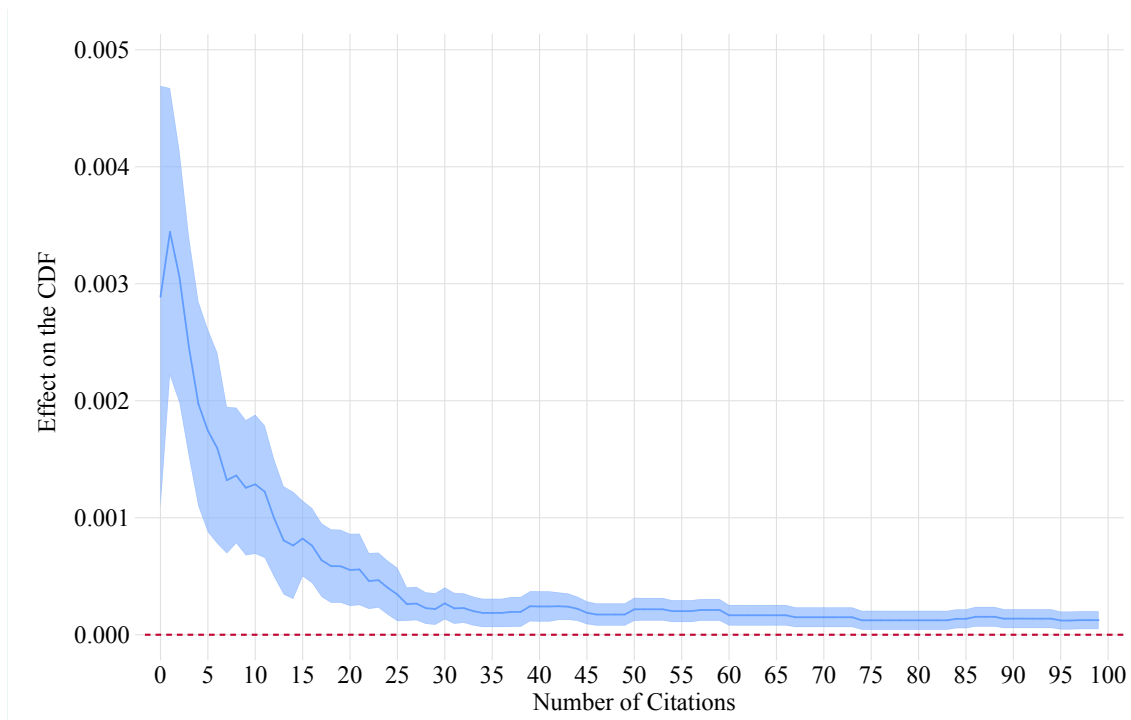
3.3 Robustness checks

Our findings are robust to the choice of functional form for the left-hand side variable (Figure B.5), to alternate fixed effects specifications (Figure B.7), to using the Borusyak et al. (2021)'s DiD estimator (Figure B.6), to dropping from the sample the citations added by either the patent office or the patent examiner (Figure B.2), and to keeping only the patents filed prior to entry (Figure B.3). We also show that while opening an affiliate in a given country is associated with an increase in citations to the parent company from this country (Figure B.8), this mechanism does not drive our results: they are robust to restricting our sample to destinations with no affiliate links with the exporter. This controls for citations by affiliates back to patents owned by their parent company (assuming the French exporter is ultimate parent/owner of the multinational network, see Figure B.4).

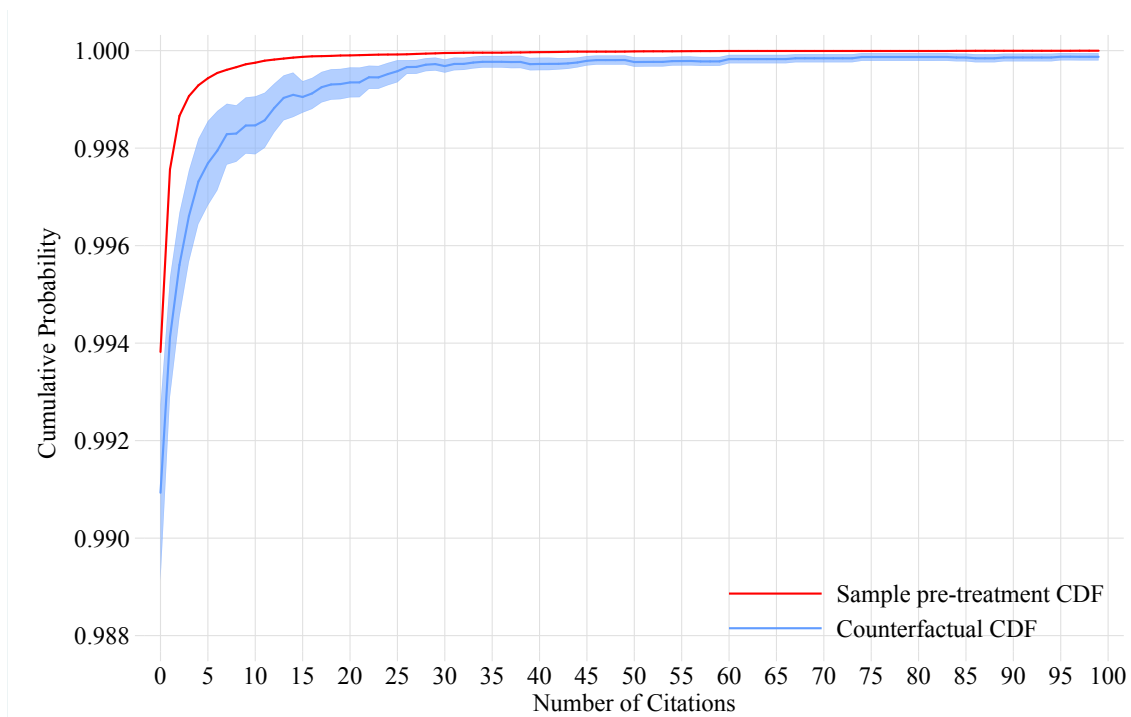
⁵As the sample cumulative distribution function shows, triadic citations are rare events. They become less rare after entry. While this is especially true for firms receiving a small number of triadic citations, it is striking that virtually no firm receives a large number of triadic citations from a country where it has not exported to yet.

Figure 3: Effect of Entry on the Distribution of Citations per Firms

(a) Distribution Regression Coefficients



(b) Cumulative Distribution of Citations per firm



Notes: Panel 3a provides estimates of the coefficients $DID_{k=6}$ associated with the initial entry into a foreign destination on the probability of having a citation rate greater than the amount on the x-axis. 99% error bands, computed with standard errors clustered at the destination-sector level, are displayed as a blue band. In Panel 3b, we plot the sample CDF in red and the estimated counterfactual CDF in blue. For details on distribution regressions see [Chernozhukov et al. \(2013\)](#).

4 The Channels for Knowledge Spillovers

The knowledge spillovers we have uncovered could be driven by horizontal competition forces, by vertical production incentives, or by other synergies that cannot be attributed to either of those channels. An example of the horizontal channel is a new patent related to a product that is similar to the one produced by the new French exporter. An example of the vertical channel is a new patent related to an upstream or downstream product relative to the one produced by the new French exporter. In this section, we evaluate the relative magnitude of these channels for knowledge spillovers. We also further separate out knowledge spillovers that are associated with multinational ties between the French exporter and the destination, regardless of whether the channel is horizontal or vertical.

4.1 Descriptive statistics

In order to measure the contribution of those distinct spillover channels, we first need to classify the cited and citing patents according to the products with which they are associated. We start with the most detailed technological IPC codes of each patent in our database and convert it into a 6-digit HS product code and then associate this product with an end-use category: consumption, intermediate processed, intermediate primary, and capital.⁶ We attribute the spillover to the horizontal competition channel when the cited-citing patents share the same product code. We then attribute the spillover to the vertical channel when the patent pair have different end-use categories. This leaves a group of “non-competing” patent pairs that share the same end-use category but have different product codes. Finally, any citations from the previous categories where the citing patent destination contains affiliates of the French exporter is assigned to a fourth category, which thus captures within-firm knowledge flows in addition to pure spillovers.

Figure B.10a reports the frequency of the cited-citing pairs using all end-use categories, further separating out pairs related to the same product code and to the same multinational network. Figure B.10b reports the frequency across the aggregated groups that we defined previously: the bulk of the patent pairs (79%) are associated with non-competing products, split relatively evenly between patent pairs with the same end-use category (horizontal) and different end-use categories (vertical). 11% of the cited-citing patent pairs are associated with competing products. And the remaining 10% of the patent pairs involve French exporters that own an affiliate in the destination country, hence spillovers associated with these pairs are more likely to reflect intra-firm knowledge transfers.

⁶See Appendix A for details on this overall mapping procedure.

4.2 Regression results

We use our baseline identification strategy to measure the effect of export entry on the spillover channel towards the citing firms in the destination countries. We deviate from our baseline in one respect: we normalize the flow of citations for each type by the pre-entry average citation rate for that specific type. This allows us to compare spillover effects across the different groups of cited-citing patent pairs. We index the groups previously defined and used in Figure B.10b by c . The outcome variable $y_{f,j,t}^c$ is the raw citation counts to exporter f 's patents coming from destination j in year t , divided by the average pre-entry citation rate for the corresponding type c . Thus, we estimate:

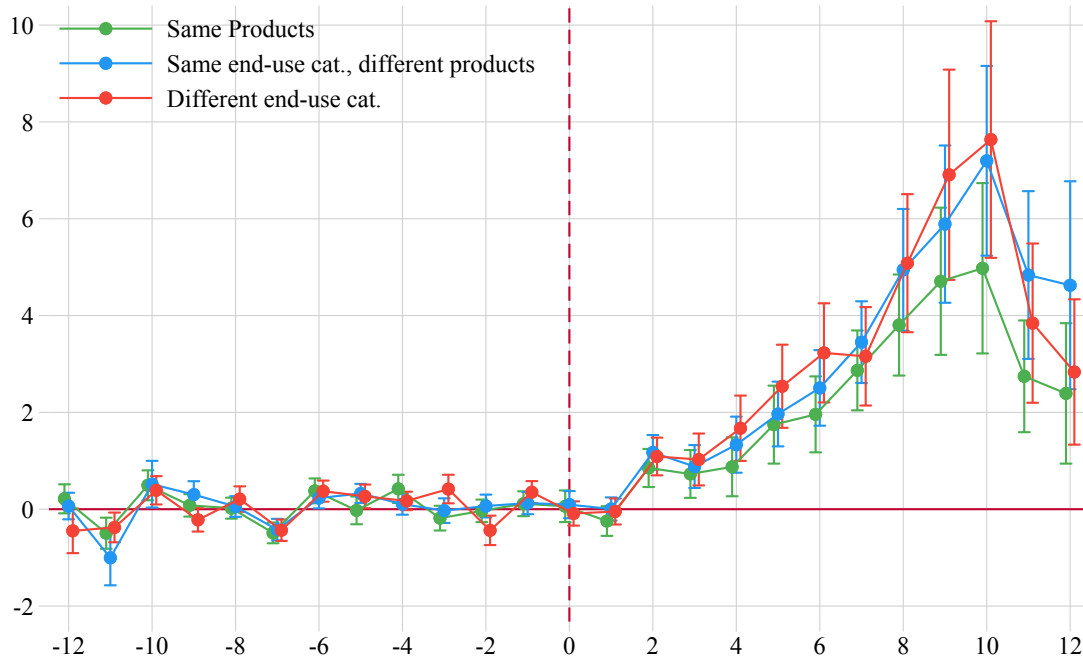
$$y_{f,j,t}^c = \sum_{k>0} \beta_k^c 1_{E_{f,j}=t-k} + \chi(f,j,t) + \epsilon_{f,j,t}. \quad (4)$$

Figure 4 summarizes the estimation results. It shows that export entry has a positive and significant impact on all three types of knowledge spillovers.⁷ However, the spillovers from the two “non-competing” channels – both horizontal and vertical – are larger. Those differences between each of the two “non-competing” channels and the “competing” (same product) one are significant in most of the later years, four or more years after export market entry.⁸

⁷The impact is even larger for the fourth group corresponding with destinations with affiliates, as it cumulates pure spillovers effects with within-firm citations.

⁸See Appendix B.9 for details.

Figure 4: Knowledge spillovers by channel



Notes: Figure 4 presents estimates of the coefficient β_k^c from Equation (4) for each sub-sample of diffusion channels. 99% confidence interval are presented. Standard errors are clustered at the destination-sector level.

5 Knowledge spillovers and technology gaps between exporter and destination

In this section, we investigate how knowledge spillovers vary with the technology gap between the exporter and the corresponding sectors in the destination. We measure those gaps using the average difference in patent quality between France and the destination in each technological field.

Our conjecture is that it should be more difficult for innovators in destinations with technologies far behind the French ones to absorb and build upon them.⁹ At the other extreme, innovators in destinations with technologies closer to the technological frontier than the French ones should find little or less value in innovating upon them. Accordingly, destinations with technologies closer to the French ones should exhibit the highest spillovers.

⁹In line with the theory of [Aghion et al. \(2005\)](#). See also [Van Patten \(2021\)](#) for a framework that incorporates heterogeneous learning abilities among importers.

5.1 Measuring the technology gaps

To test this conjecture, we follow the innovation literature and the OECD patent data manual to construct a measure of patent quality based on a patent’s forward citations. However, propensity to patent and cite vary strongly from one technology to another and from one country to another. Therefore, we proceed as follows. For each 3-digit technological field and destination, we measure proximity to the technology frontier using the number of all citations received from USPTO patents during 2000-2010 and standardize this number by the number of citations during the same period to USPTO patents in the same technological field and coming from all USPTO patents (denoted $QUAL_{i,j}$).¹⁰ We then measure the proximity to the technology frontier in the same way for the French firm using the French proximity to the frontier for each of the technological fields of the firm’s patent portfolio (denoted $QUAL_{i,FR}$). We then construct the technology gap between the destination and the exporter as the weighted difference in those ratios, destination versus France, across the exporter’s technological fields.

$$GAP_{j,f} = \sum_i w_{i,f} (QUAL_{i,j} - QUAL_{i,FR}).$$

The firm-level technological field weight $w_{i,f}$ is computed using the count of that technological field’s appearance in the portfolio of the firm’s patents – expressed as a share of the total count. For example, if the car technological field appears twice and the GPS technological field appears once in the full firm’s patent history, then the car and GPS technological fields are assigned weights of 2/3 and 1/3.

Figure C.2 in Appendix C shows the cumulative distribution of $GAP_{j,f}$. Approximately 90% of the destinations have negative technology gaps with the corresponding French exporter. For 50% of those destinations, the gap is greater than 30 citations per thousand US citations.

We use the US as a benchmark to standardize the count of citations in each technology and country. In Appendix C, we show that the citation share from the United States is a good proxy for the distance to the technological frontier for the French exporters: The correlation between that citation share and the exporters’ labor productivity growth is positive and significant. We also construct a different measure of patent quality based on the number of patent offices protecting the firm’s patents; and then show that we can replicate all of our main results using this alternate measure (see Appendix D).

¹⁰Formally, for any technology i and country j , we calculate the proximity to the frontier as:

$$QUAL_{i,j} = \frac{\sum_{p \in (US,.)} \sum_{p' \in (j,i)} Cit(p, p')}{\sum_{p \in (US,.)} \sum_{p' \in (US,i)} Cit(p, p')}$$

where $Cit(p, p')$ is an indicator equal to one if patent p (filed at the USPTO regardless of the technological field) cites patent p' (in country j and technological field i).

5.2 Knowledge spillover and absorptive capacity

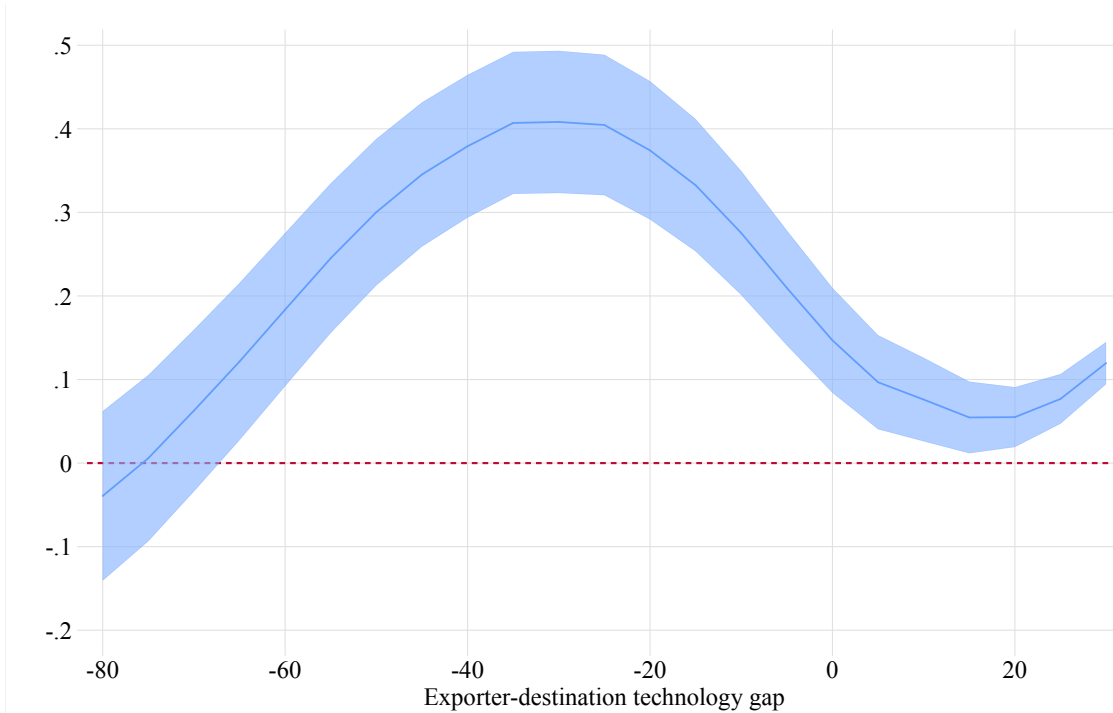
To test whether destinations with technologies closer to those of the French exporter exhibit higher spillovers, we estimate :

$$Y_{f,j,t} = \sum_{k>0} \left(\beta_k \times 1_{E_{f,j}=t-k} + \gamma_k^g \text{GAP}_{f,j}^g \times 1_{E_{f,j}=t-k} \right) + \chi(f, j, t) + \epsilon_{f,j,t}, \quad (5)$$

where γ_k^g is a time varying coefficient that represents the effect of entry at different technology gap values g , $\text{GAP}_{f,j}^g$. To capture the possibility of a non-linear relationship between the technological gap and the trade-induced knowledge spillovers $Y_{f,j,t}$ from the exporter f to destination j , we combine the DiD estimator from [de Chaisemartin and d'Haultfoeuille \(2020\)](#) with a local linear estimator. In words, we estimate a sequence of DiD coefficients locally at various points in the distribution of $\text{GAP}_{f,j}^g$.

The results are shown graphically in [Figure 5](#). We find strong evidence that the strength of the spillovers is hump-shaped in the destination's absorptive capacity relative to the new French exporter. Theoretically, there is no reason to expect that peak spillovers occur when the technology gap between the destination and the French exporter is zero: there are forces pushing down the spillover for destinations with large positive or negative gaps, but no reason to expect that those forces are symmetric. Empirically, we find that they are not: the peak spillovers occur for destinations that lag behind by 30 US citations per thousand citations. This is the median technology gap in our sample. [Figure 5](#) clearly highlights how the strength of those spillovers decreases for destinations with both higher and lower levels of technology gaps. For destinations with positive technology gaps, the spillover effect is nonetheless still positive and significant. For destinations with the lowest negative technology gaps below -70 , accounting for roughly 5% of our sample, the spillover is no longer significantly different from zero.

Figure 5: Technology gap and the effect of entry on citations



Notes: This figure presents estimates of the coefficient $\gamma_{k=6}$ from Equation (5). This figure plots the effect of the initial entry into a foreign destination estimated locally at a given point of the distribution of the firm-destination technological distance. The dependant variable is the number of citations. We use Gaussian weights with a bandwidth set to 5. 99% confidence interval are presented. Standard errors are clustered at the destination-sector level.

6 Conclusion

Using French firm-level fiscal, customs, and patent citation data over the period 1995-2012, we estimate the impact of export market entry on the citations of the exporter's patents in the destination country. We find a positive and significant effect of entry on those citations. Moreover: (i) entering a new foreign market has a greater impact on the extensive margin – the probability of obtaining at least one or a few triadic citations – than the intensive margin – the probability of obtaining many citations; (ii) inventors in destination countries patent mostly in products that do not directly compete with those of the exporting firm; (iii) the spillover intensity is hump-shaped with respect to the technological distance between the exporting firm and the destination country. Overall, our results validate the notion that trade induces technological spillovers (in line with [Coe and Helpman, 1995](#)). And the results are also consistent with [Cohen and Levinthal \(1989\)](#)'s view that spillovers occur conditionally upon the recipient country exhibiting sufficient *absorptive capacity*.

Our main finding that trade induces knowledge spillovers is in line with the notion that trade is a source of cross-country convergence. In addition, fostering

development in the destination country increases the country's ability to build upon the innovations brought by foreign exporters, thus inducing a reinforcing loop for productivity growth.

References

- Aghion, Philippe, Antonin Bergeaud, Matthieu Lequien, and Marc J. Melitz**, "The Heterogeneous Impact of Market Size on Innovation: Evidence from French Firm-Level Exports," *The Review of Economics and Statistics*, 05 2022, pp. 1–56.
- , –, –, –, –, and **Thomas Zuber**, "Opposing firm-level responses to the China shock: Output competition versus input supply," *American Economic Journal: Economic Policy*, forthcoming.
- , **Nicholas Bloom, Richard Blundell, Rachel Griffith, and Peter Howitt**, "Competition and Innovation: an Inverted-U Relationship," *The Quarterly Journal of Economics*, 2005, 120 (2), 701–728.
- Aitken, Brian J and Ann E Harrison**, "Do domestic firms benefit from direct foreign investment? Evidence from Venezuela," *American economic review*, 1999, 89 (3), 605–618.
- Alcacer, Juan and Michelle Gittelman**, "Patent citations as a measure of knowledge flows: The influence of examiner citations," *The Review of Economics and Statistics*, 2006, 88 (4), 774–779.
- Amiti, Mary, Cédric Duprez, Jozef Konings, and John Van Reenen**, "FDI and superstar spillovers: Evidence from firm-to-firm transactions," Technical Report, National Bureau of Economic Research 2023.
- Autor, David, David Dorn, Gordon H Hanson, Gary Pisano, and Pian Shu**, "Foreign competition and domestic innovation: Evidence from US patents," *American Economic Review: Insights*, 2020, 2 (3), 357–374.
- Azoulay, Pierre, Joshua S Graff Zivin, and Jialan Wang**, "Superstar extinction," *The Quarterly Journal of Economics*, 2010, 125 (2), 549–589.
- Bloom, Nicholas, Mirko Draca, and John Van Reenen**, "Trade induced technical change? The impact of Chinese imports on innovation, IT and productivity," *The Review of Economic Studies*, 2016, 83 (1), 87–117.
- Bombardini, Matilde, Bingjing Li, and Ruoying Wang**, "Import Competition and Innovation: Evidence from China," Technical Report 2017.

- Borusyak, Kirill, Xavier Jaravel, and Jann Spiess**, "Revisiting event study designs: Robust and efficient estimation," *Unpublished working paper, version May*, 2021, 19, 2021.
- Branstetter, Lee G**, "Are knowledge spillovers international or intranational in scope?: Microeconomic evidence from the US and Japan," *Journal of international Economics*, 2001, 53 (1), 53–79.
- Callaway, Brantly and Pedro HC Sant'Anna**, "Difference-in-differences with multiple time periods," *Available at SSRN 3148250*, 2019.
- Chen, Jiafeng and Jonathan Roth**, "Log-like? ATEs defined with zero outcomes are (arbitrarily) scale-dependent," *arXiv preprint arXiv:2212.06080*, 2022.
- Chernozhukov, Victor, Iván Fernández-Val, and Blaise Melly**, "Inference on counterfactual distributions," *Econometrica*, 2013, 81 (6), 2205–2268.
- Coe, David T. and Elhanan Helpman**, "International R&D spillovers," *European Economic Review*, 1995, 39 (5), 859–887.
- Coe, David T, Elhanan Helpman, and Alexander W Hoffmaister**, "International R&D spillovers and institutions," *European Economic Review*, 2009, 53 (7), 723–741.
- Cohen, Wesley M and Daniel A Levinthal**, "Innovation and learning: the two faces of R & D," *The economic journal*, 1989, 99 (397), 569–596.
- Cotterlaz, Pierre and Arthur Guillouzoic**, "The Percolation of Knowledge across Space," *Available at SSRN 3010092*, 2020.
- de Chaisemartin, Clément and Xavier d'Haultfoeuille**, "Two-way fixed effects estimators with heterogeneous treatment effects," *American Economic Review*, 2020, 110 (9), 2964–96.
- Eaton, Jonathan and Samuel Kortum**, "Trade in ideas Patenting and productivity in the OECD," *Journal of international Economics*, 1996, 40 (3-4), 251–278.
- Goodman-Bacon, Andrew**, "Difference-in-differences with variation in treatment timing," Technical Report, National Bureau of Economic Research 2018.
- Griffith, Rachel, Stephen Redding, and John Van Reenen**, "Mapping the two faces of R&D: Productivity growth in a panel of OECD industries," *Review of economics and statistics*, 2004, 86 (4), 883–895.
- Harhoff, Dietmar, Frederic M Scherer, and Katrin Vopel**, "Citations, family size, opposition and the value of patent rights," *Research policy*, 2003, 32 (8), 1343–1363.

- Jaffe, Adam B and Manuel Trajtenberg**, “International knowledge flows: Evidence from patent citations,” *Economics of innovation and new technology*, 1999, 8 (1-2), 105–136.
- Jaravel, Xavier, Neviana Petkova, and Alex Bell**, “Team-specific capital and innovation,” *American Economic Review*, 2018, 108 (4-5), 1034–73.
- Keller, Wolfgang**, “International technology diffusion,” *Journal of economic literature*, 2004, 42 (3), 752–782.
- , “International trade, foreign direct investment, and technology spillovers,” in “Handbook of the Economics of Innovation,” Vol. 2, Elsevier, 2010, pp. 793–829.
- **and Stephen R Yeaple**, “Multinational enterprises, international trade, and productivity growth: firm-level evidence from the United States,” *The Review of Economics and Statistics*, 2009, 91 (4), 821–831.
- Lanjouw, Jean Olson**, “Patent protection in the shadow of infringement: Simulation estimations of patent value,” *The Review of Economic Studies*, 1998, 65 (4), 671–710.
- Lequien, Matthieu, Martin Mugnier, Loriane Py, and Paul Trichelair**, “Linking patents to firms: insights with French firms,” 2019.
- Lileeva, Alla and Daniel Trefler**, “Improved Access to Foreign Markets Raises Plant-Level Productivity... for Some Plants,” *Quarterly Journal of Economics*, 2010, 125 (3), 1051–1099.
- Lybbert, Travis J. and Nikolas J. Zolas**, “Getting patents and economic data to speak to each other: An ‘Algorithmic Links with Probabilities’ approach for joint analyses of patenting and economic activity,” *Research Policy*, 2014, 43 (3), 530–542.
- MacGarvie, Megan**, “Do firms learn from international trade?,” *Review of Economics and Statistics*, 2006, 88 (1), 46–60.
- Melitz, Marc J. and Stephen J Redding**, “Trade and innovation,” Technical Report w28945, National bureau of economic research 2021.
- OECD**, *OECD Patent Statistics Manual*, OECD publishing, 2009.
- Patten, Diana Van**, “International Diffusion of Technology: Accounting for Heterogeneous Learning Abilities,” 2021. Mimeo.
- Peri, Giovanni**, “Determinants of knowledge flows and their effect on innovation,” *Review of economics and Statistics*, 2005, 87 (2), 308–322.
- Squicciarini, Mariagrazia, Hélène Dernis, and Chiara Criscuolo**, “Measuring patent quality: Indicators of technological and economic value,” 2013.

Waldinger, Fabian, "Peer effects in science: Evidence from the dismissal of scientists in Nazi Germany," *The Review of Economic Studies*, 2011, 79 (2), 838–861.

Watzinger, Martin, Lukas Treber, and Monika Schnitzer, "Universities and Science-Based Innovation in the Private Sector," 2018. mimeo LMU Munich.

– , **Markus Nagler, Lukas Treber, and Monika Schnitzer**, "Mobility of Scientists and the Spread of Ideas," Discussion paper series in economics and management 17-22, German Economic Association of Business Administration 2017.

APPENDIX

A Patent Data

Our patent data source is the Spring 2016 PATSTAT dataset from the European Patent Office. This dataset contains detailed information on all patent applications from most patent offices worldwide, including information on the network of patent linkages via citations and the origin of these citations (see Figure A.1 and discussion in Section 2). We use it to measure French firms' patent stocks and the citations from foreign inventors to French firms' patents. PATSTAT is a set of tables, each containing different types of information, that can be combined together in many different ways. Table A.1 describes specifically which tables were used in this paper.

Table A.1: PATSTAT

| Table | Content & Purpose |
|--------|--|
| TLS201 | Application filling date of each patent & application authority of each patent to determine which patent families are "triadic" (patents related to the same invention but filed in at least the European Patent Office (EPO), the Japan Patent Office (JPO) and the United States Patent and Trademark Office (USPTO)). |
| TLS207 | List of applicants of each patent |
| TLS906 | Country of residence of each applicant |
| TLS212 | Citation linkage between each pairs of citing-cited patents & nature of the citation (added by the applicant, the examiner, etc.) |
| TLS230 | Aggregate technological field for each patent that we use to compute the fixed effects. |
| TLS209 | IPC technological codes associated with each patent. Used to compute technological field to technological field citations |

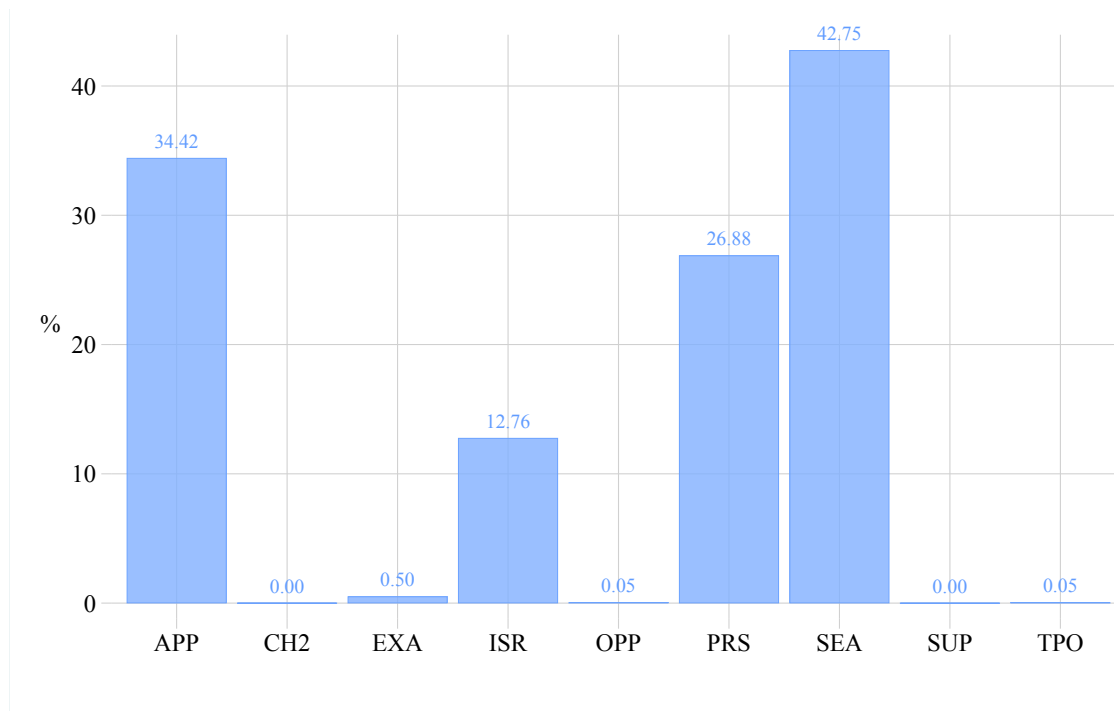
Notes: This table describes which PATSTAT tables were used in this paper.

Additionally, we convert IPC (International Patent Classification) technological code to HS (Harmonized System) product code using the matching developed by Lybbert and Zolas, 2014. Their probabilistic matching is based on the lexicographic proximity between industry and patent description. The HS codes are then converted to BEC (Broad Economic Categories) end-use categories using the appropriate UNSTAT concordance table (<https://unstats.un.org/unsd/classifications/Econ>).

Finally, each French firm has a unique identifying number (Siren) across all French administrative databases while patent offices identify firms using only

their name. We use the matching algorithm developed by [Lequien et al. \(2019\)](#) to link each patent application with the Siren numbers of the corresponding French firms.

Figure A.1: Citation Origins



Notes: This figure shows who added the citation to a given patent. APP: Applicant added citations; ISR/PRS/SEA: citations added during the 1st phase of the research for prior art by the patent office; EXA: Examiner added citations. A citation may belong to several categories.

B Robustness

B.1 Cumulative results at different horizons

Table B.1: Results Summary

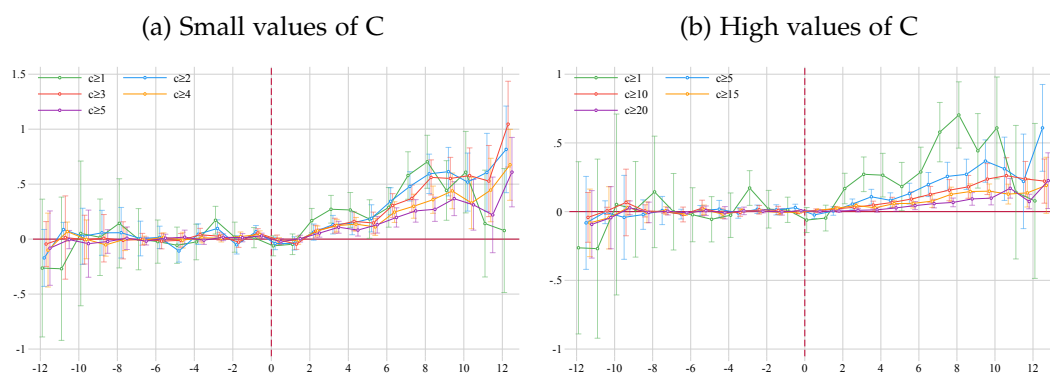
| | $k = 3$ | $k = 6$ | $k = 9$ | $k = 12$ |
|-----------------|---------|---------|---------|----------|
| $\sum_k DID_k$ | 0.047 | 0.175 | 0.505 | 0.876 |
| % Increase | 23.09 | 42.82 | 82.45 | 107.34 |
| $E(C) \times k$ | 0.204 | 0.408 | 0.612 | 0.816 |

NOTE: This table presents estimates of the cumulative effect $\sum_{k>0} DID_k$ at different horizons and its percentage increase relative to the sample mean.

B.2 Distribution regressions: dynamic results

We reports the results from estimating the same specification as in Section 3.2 for all pre- and post-entry coefficients for selected thresholds of the triadic citations variable in Figure B.1.

Figure B.1: FULLY DYNAMIC DISTRIBUTION REGRESSIONS



Notes: This figure presents the results from estimating Equation (2) where the outcome variable is a dummy variable equals to 1 when the French firm is cited more than a certain threshold of citations by the destination country that year. Everything else is unchanged.

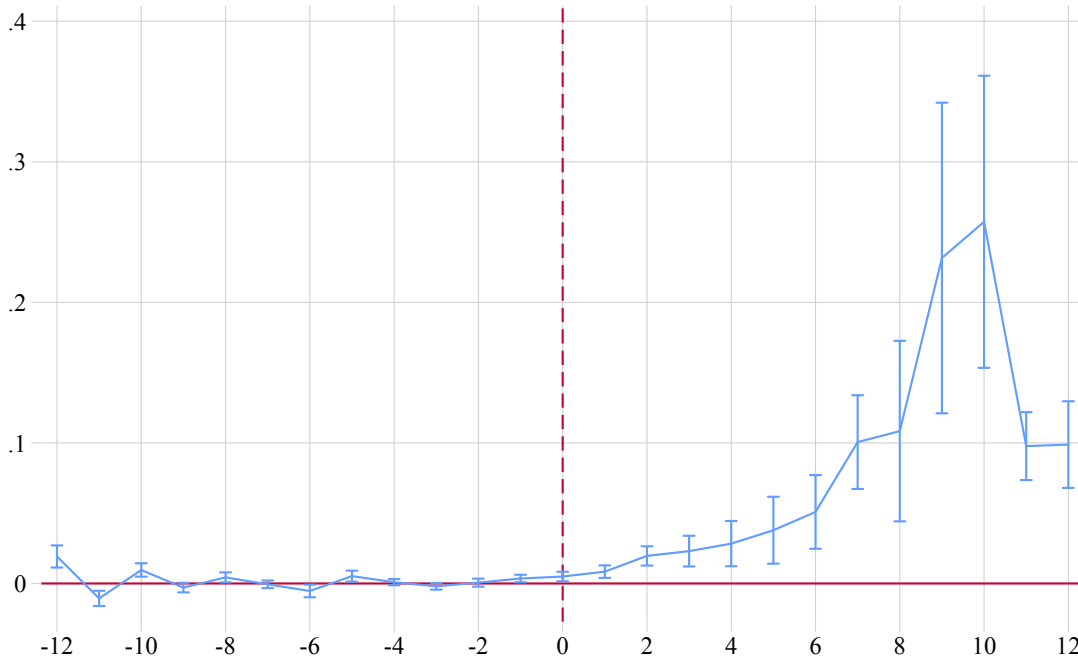
B.3 Citations added by the applicant

Here we estimate our baseline model, but we restrict our attention to citations added by the foreign patent applicant, thus we ignore the citations added during the initial search process by the patent office, and we also ignore the citations added by the patent examiner. Fixed effects and the clustering of standard errors remain the same as in the baseline regression. In Figure B.2 the outcome variable is the raw count of triadic citations Y as in the baseline regression. Entry entails a similar impact as in the baseline regression. We can therefore exclude that the knowledge spillover we uncover only touches the patent examiner.

B.4 Citations to the pre-entry stock of patents

Keeping everything else unchanged, we now estimate the effect of entry on the citations to the pre-entry stock of patents of the exporting firm. The export entry generated exposure and citations to existing patents, as the positive coefficients presented in Figure B.3 show.

Figure B.2: Firm level regression - Applicant added Citations



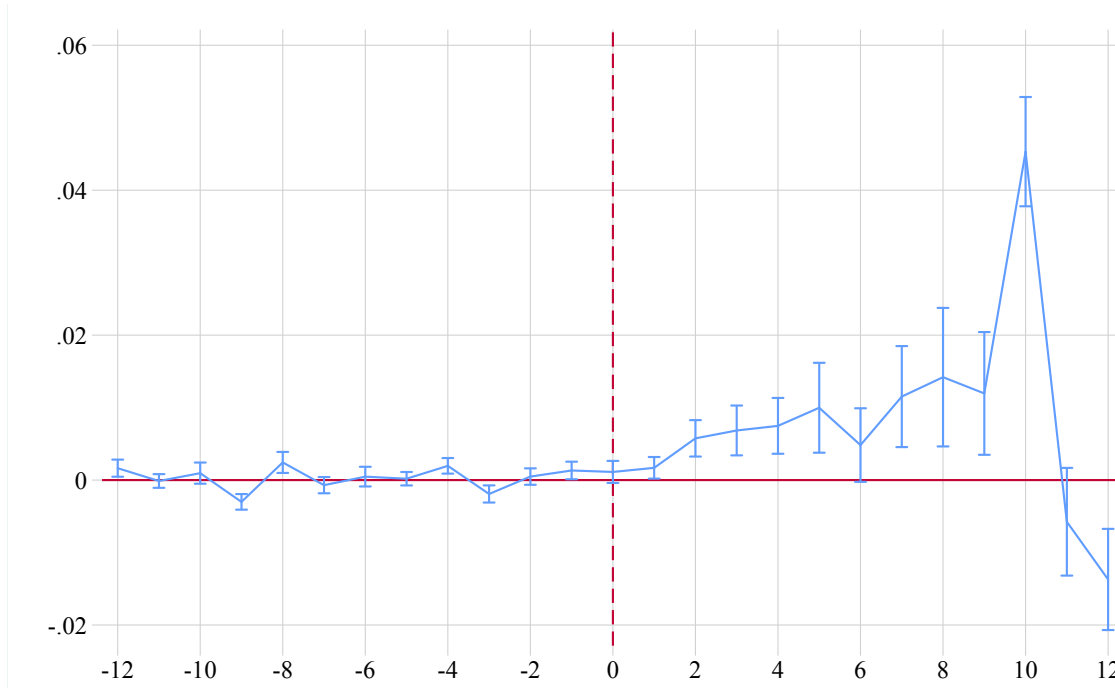
Notes: Panel B.2 presents the results from estimating Equation 2 after restricting citations to applicant added citations only. Everything else is unchanged.

B.5 Trade without affiliates

The affiliates of a French parent company may conduct R&D activity and would naturally be inclined to cite intellectual property developed and owned by their parent company. Furthermore with a foreign affiliate in a country, foreign firms in this country may cite the French firm's patents because they observe the production process or the products sold directly and locally by the affiliate rather than because they observe the exported product by the parent company. To account for these mechanisms, we reproduce our baseline results on a sample restricted to foreign destinations where the firm never opens an affiliate. As Figure B.4 shows the dynamics pattern of citations remains the same as in the baseline specification, even though the smaller coefficients indicate that part of the effect captured in the baseline estimates might be due to affiliates innovating in the destination country – which also constitutes a technological transfer.¹¹

¹¹Excluding countries with affiliates, 0.11 extra citations are recorded in the 10th year after entry, which corresponds to an increase of 239% over the sample average of 0.046 citations. The corresponding increase in the baseline regression is 410%.

Figure B.3: Effect of entry on pre-entry patents



Notes: This figure presents estimates of the coefficient DID_k from Equation (2). The sample excludes citations to patents that did not exist at the time of entry. The x-axis represents the value of k , $k = 0$ being the first year the firm exports to country j . 99% error bands, computed with robust standard errors clustered at the destination-sector level, are displayed as blue brackets.

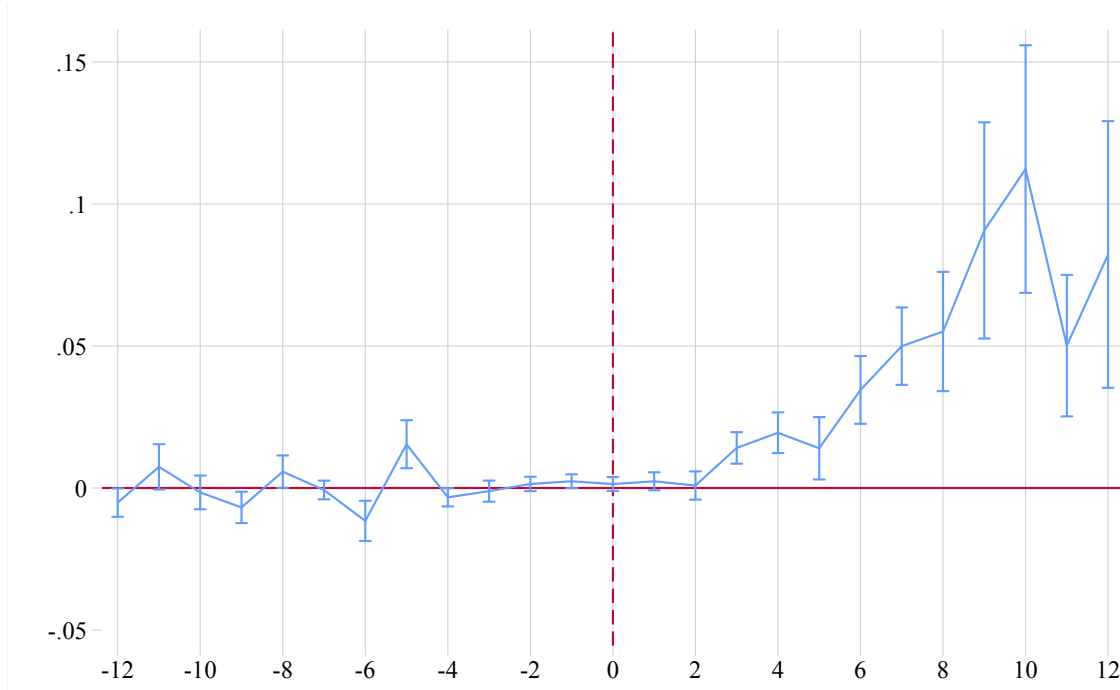
B.6 Different functional forms

We estimate Equation (2) replacing the triadic citation count Y by its inverse hyperbolic sinus $\mathcal{H}(C)$, by its cubic root and by $\log(1 + Y)$ (Figure B.5). Each of those transformations assigns slightly different weights to the intensive and extensive margins (Chen and Roth, 2022). The results remain qualitatively the same as in the baseline regression: flat pre-trends, a small initial increase in the outcome variable, and a sharp increase after 2 years, which fades away after a decade.

B.7 Fixed Effects

In the main section, we showed results for the baseline specification where we use fixed effects to account for firm dynamics and destination dynamics by introducing both firm-year and country-technological field-year fixed effects. In Figure B.7, we contrast our baseline results (in blue) with several other plausible specifications. The results remain qualitatively the same: flat pre-trends, an effect that increases over time, then partially fades away after a decade. When controlling for a firm-year-region fixed effect, the effect on citations appears much more

Figure B.4: Excluding countries with affiliates



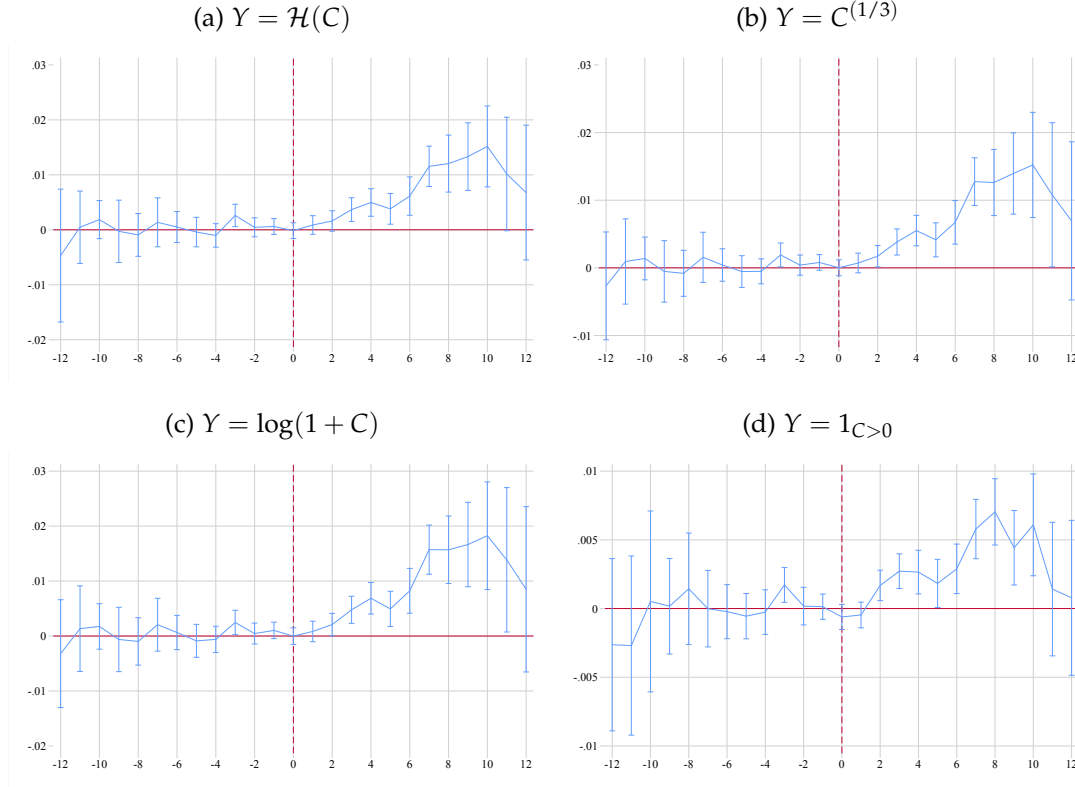
Notes: This figure presents estimates of the coefficient DID_k from Equation (2). The sample excludes the destination-firm pairs for destinations where the firm owns an affiliate. The x-axis represents the value of k , $k = 0$ being the first year the firm exports to country j . 99% error bands, computed with robust standard errors clustered at the destination-sector level, are displayed as blue brackets.

persistent (red curve).

B.8 Affiliate induced spillovers

While it is not the main purpose of this paper, a by-product of our data collection effort is that we can look at what happens to citation linkages after a French parent company opens or acquire an affiliate in a foreign country. Using the same identification strategy as the one we use to isolate the effect of trade on knowledge diffusion, we provide some evidence that opening an affiliate in a destination country also generates an increase in citations to the patents of the parent company. This complements the results from [Amiti et al. \(2023\)](#) that shows that domestic firms that start selling to foreign affiliates experience higher Total Factor Productivity which the authors interpret as evidence of spillovers from Foreign Direct Investment.

Figure B.5: OTHER LHS FUNCTIONAL FORMS



Notes: Panel B.5a presents the results from estimating Equation (2) after transforming the outcome variable with the Inverse Hyperbolic Sine. In Panel B.5b we use the cubic root of citations, in Panel B.5c the log of 1+ the number of citations and in Panel B.5d a dummy variable equals to 1 when the French firm is cited by the destination country that year. Everything else is unchanged.

B.9 The Channels of knowledge spillovers

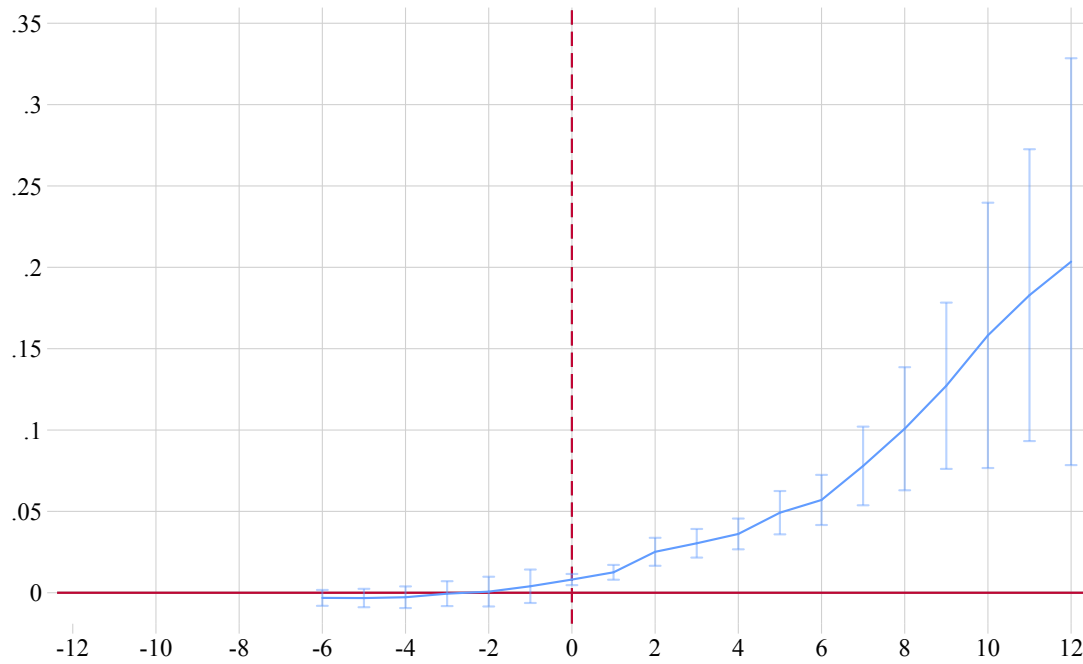
We estimate the following equation to formally test the statistical difference between the two “non-competing” products channels against the “competing” products channel, excluding the group with potential multinational connections:

$$y_{f,j,t}^{\text{non-competing}} - y_{f,j,t}^{\text{competing}} = \sum_{k>0} \beta_k^c 1_{E_{f,j}=t-k} + \chi(f, j, t) + \epsilon_{f,j,t}. \quad (6)$$

In this case, the coefficient β_k^c captures the increased citation rate of each non-competing channel (horizontal and vertical) relative to the competing channel. As in our baseline model, we use the generic control function $\chi(f, j, t)$ for the firm and destination controls: firm-year and destination-technological field-year fixed effects.

The differences between each of the two “non-competing” channels and the “competing” (same product) one are significant in most of the later years, four or

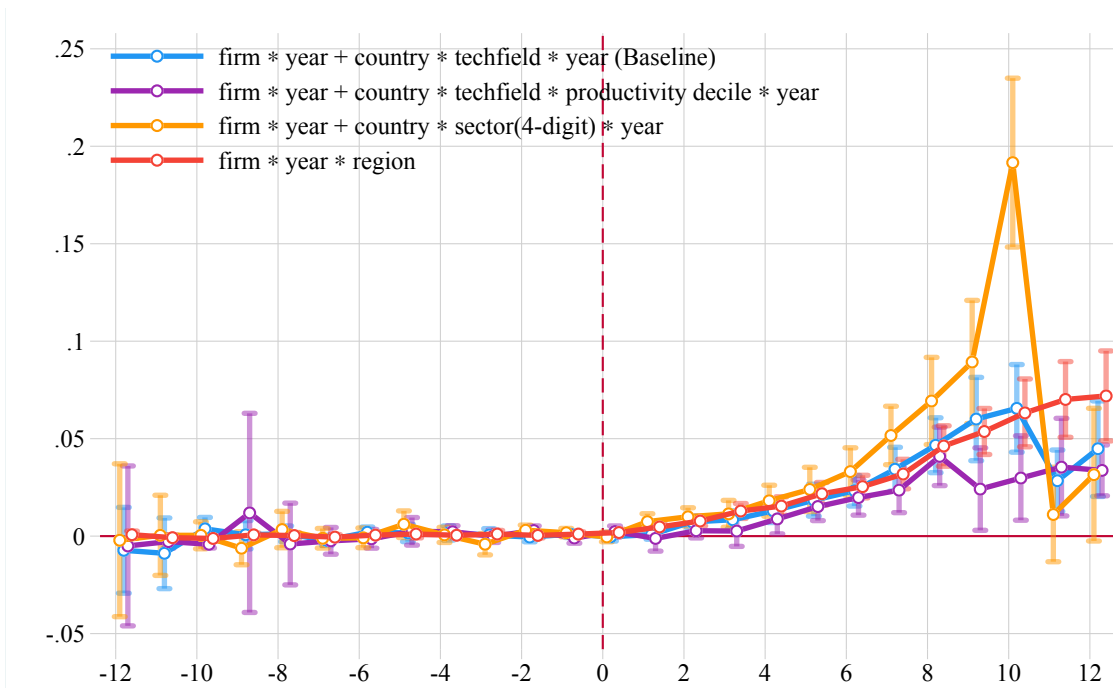
Figure B.6: Baseline estimation of the effect of entry on citations



Notes: This figure presents estimates obtained using the [Borusyak et al. \(2021\)](#) DiD estimator. The x-axis represents the value of k , $k = 0$ being the first year the firm exports to country j . 99% error bands, computed with robust standard errors clustered at the destination-sector level, are displayed as blue brackets.

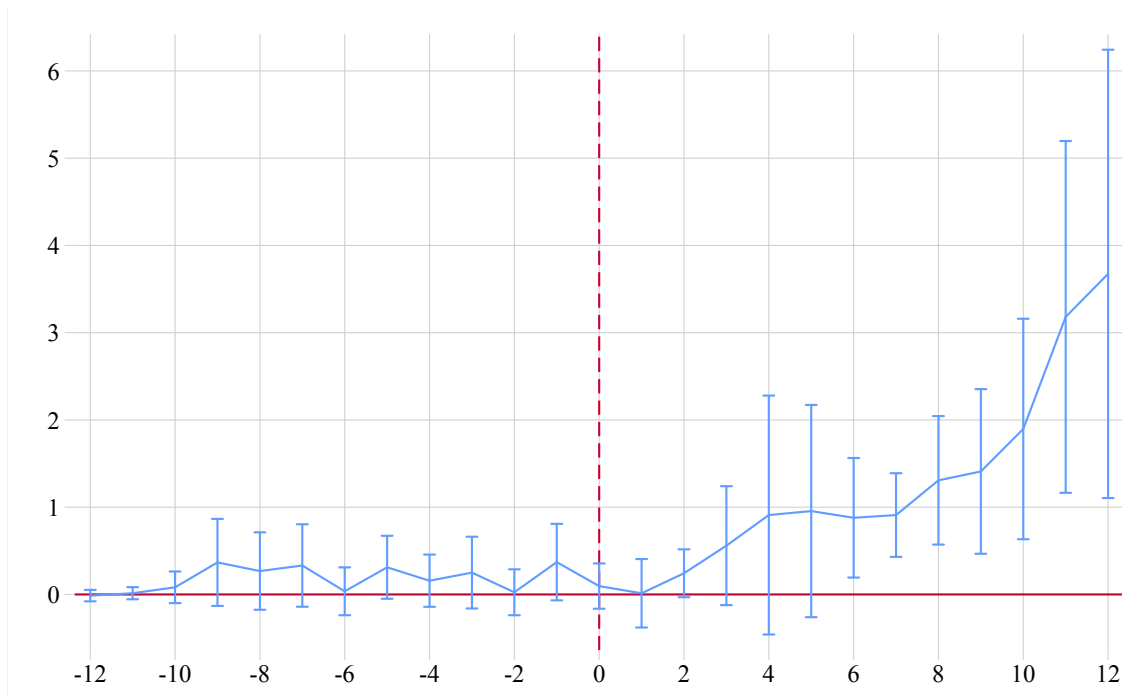
more years after export market entry.

Figure B.7: Controlling for different fixed effects structures



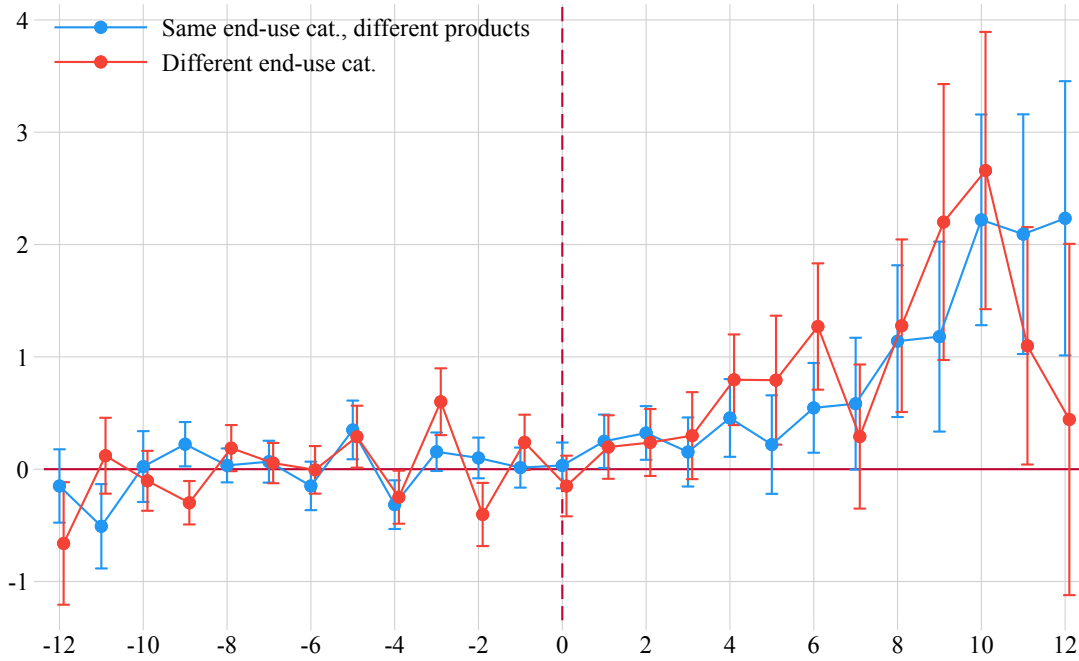
Notes: This figure presents estimates of the coefficients DID_k from Equation (2). The x-axis represents the value of k , $k = 0$ being the first year the firm exports to country j . 99% error bands, computed with robust standard errors clustered at the destination-sector level, are displayed as blue brackets. This specification replaces the set of fixed effects with various combination: firm-year + country-technological field-productivity decile-year in purple; firm-year + country-sector-year in orange ; firm-region-year fixed effects in red. Region groups correspond to wide geographical regions such North America, South America, Western Europe, etc. technological field groups are built based on the technological field that a firm most frequently patents in.

Figure B.8: Effect of opening an affiliate on citations



Notes: This figure presents estimates of the coefficient DID_k from Equation (2). The x-axis represents the value of k , $k = 0$ being the first year the firm declares owning an affiliate in country j . 99% error bands, computed with robust standard errors clustered at the destination-sector level, are displayed as blue brackets. This specification includes firm-year and destination-technological field-year fixed effects as well as a control for the $\log(1+\text{exports})$ to the destination country.

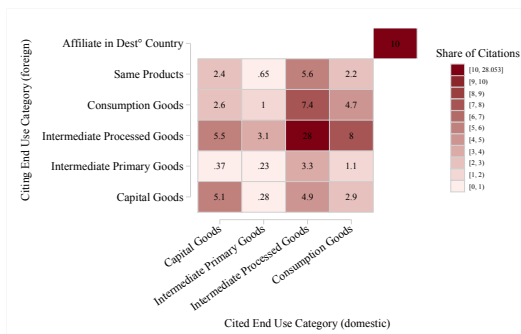
Figure B.9: Knowledge spillovers by channel



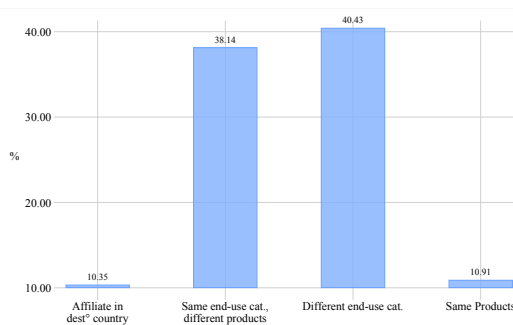
Notes: This Figure presents estimates of the coefficient β_k^c from Equation (6) where the dependant variable is the difference between the two categories presented and the reference category - “competing” (same product).

Figure B.10: Innovation Networks

(a) Citations by category of technologies



(b) Citations by channel of diffusion

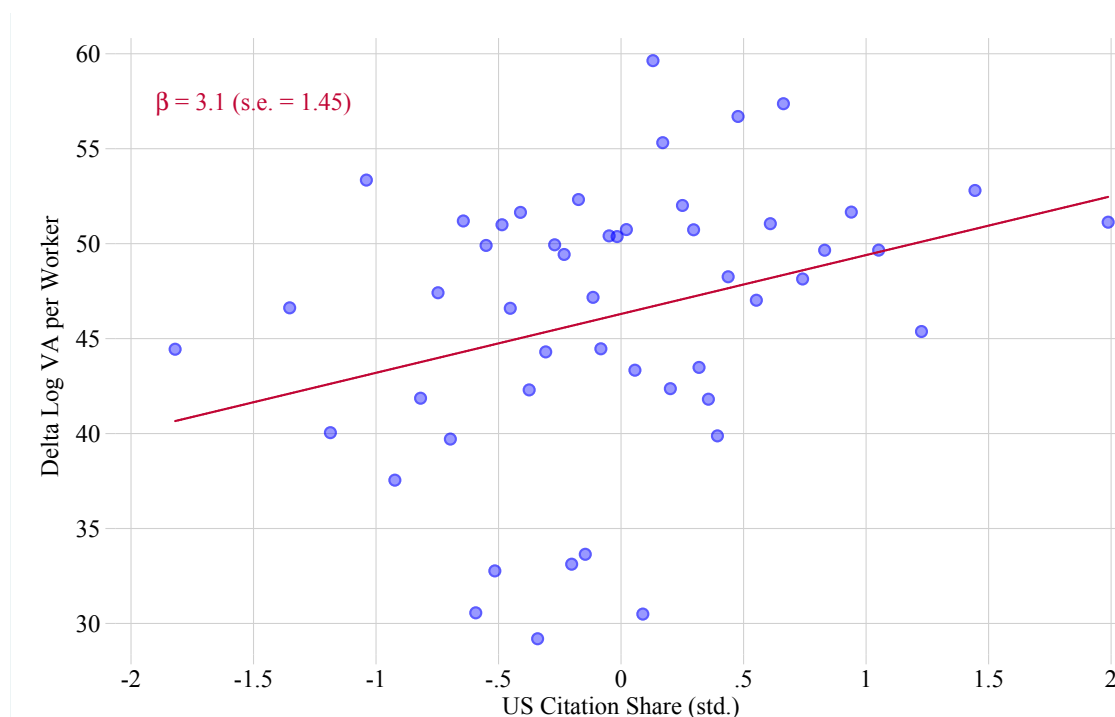


Notes: Panel B.10a presents the distribution of citations by the end-use categories of the associated technologies. Panel B.10b presents the distribution of citations by end-use for more aggregate categories (same products; different products, same end-use categories; different end-use categories).

C Citations from the US and productivity growth

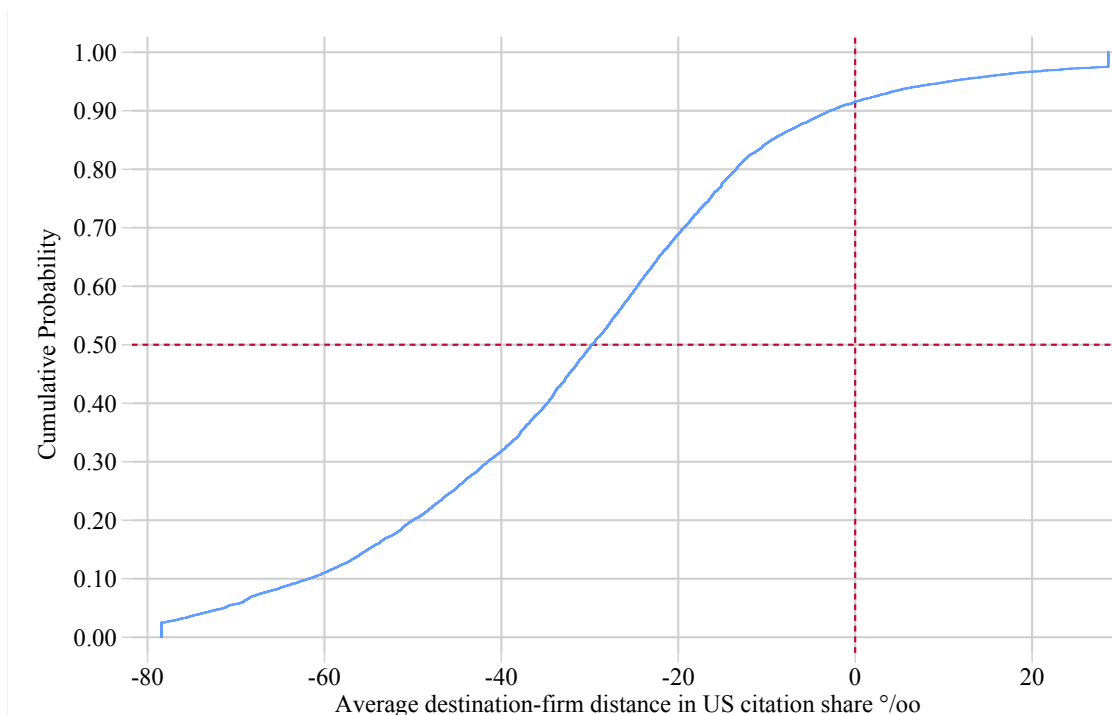
Figure C.1 suggests that a high citation share from the US is a good proxy of the distance to the technological frontier. Firms patenting in fields with a higher share of US citations display higher labor productivity growth. A one standard deviation higher citation rate from the US (e.g. going from the citation rate of the chemical industry to that of the pharmaceutical industry) is associated with a 3.1 log percentage points higher growth rate of value-added per worker.

Figure C.1: Labor productivity growth and citations from the US



Notes: This figure presents a binscatter of the standardized citation share from the US to French firms ($WQUAL_f$ over 2000-2010) versus the observed labor productivity growth ($100 \times \log$ difference of value added per worker) of those firms over 2000-2010.

Figure C.2: Distribution of technological distances



Notes: This figure presents the CDF of the firm-destination measure of technological distance. The measure is winsorized at the 2.5-97.5 level.

D Alternative way of measuring patent quality

D.1 Impact of the exporting firm's patent quality

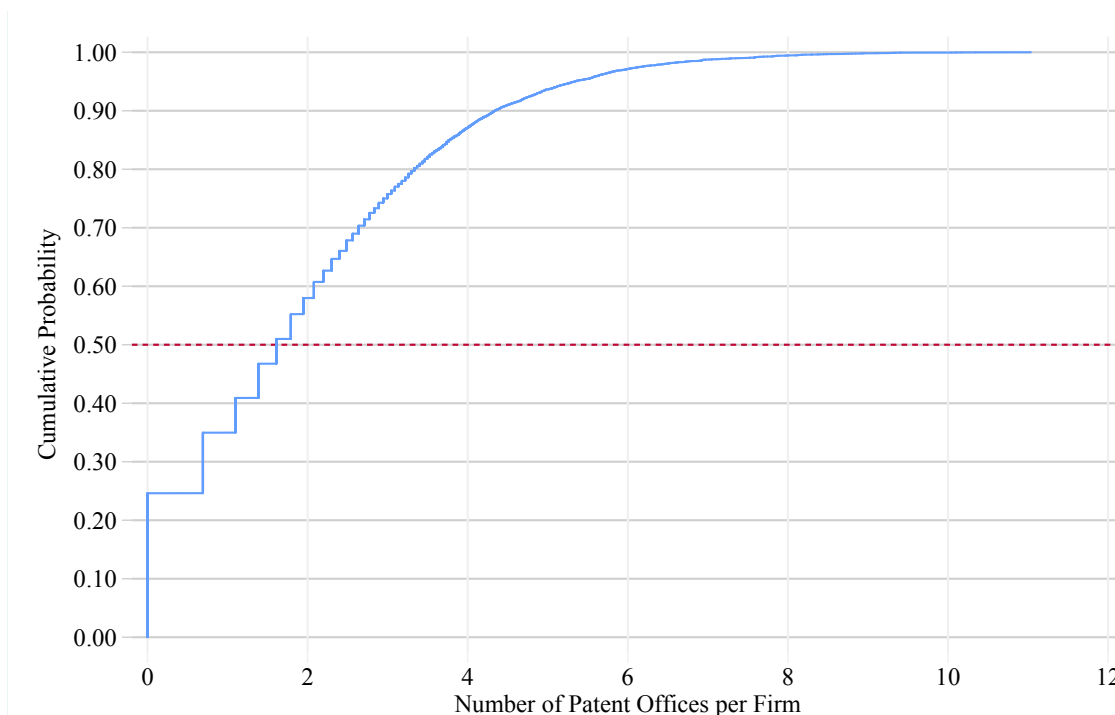
Measuring patent quality

We follow the OECD patent data manual to construct an alternative measure of patent quality for the French exporting firm. We use the number of patent offices the patent was submitted to by the firm. Submitting a patent to a higher number of patent offices amounts to extending the geographical coverage of intellectual property protection for the patent. Doing so is costly for the firm, hence the firm will decide to incur the additional cost of applying to more patent offices only if it anticipates the patent to be sufficiently successful, which we take as reflecting the patent's quality.

Figure D.1 shows the distribution of the number of patent office submissions (over all patents of the firm and in log) for the French exporting firms. We see that 25% of firms submit to only one patent office, 50% of firms submit to less than 6 patent offices. Only 10% of firms submit to more than 66 offices.

We test whether the number of patent office submissions is truly related to more common measures of firm quality. We first describe the relationship be-

Figure D.1: Distribution of the number of patent offices used by firms



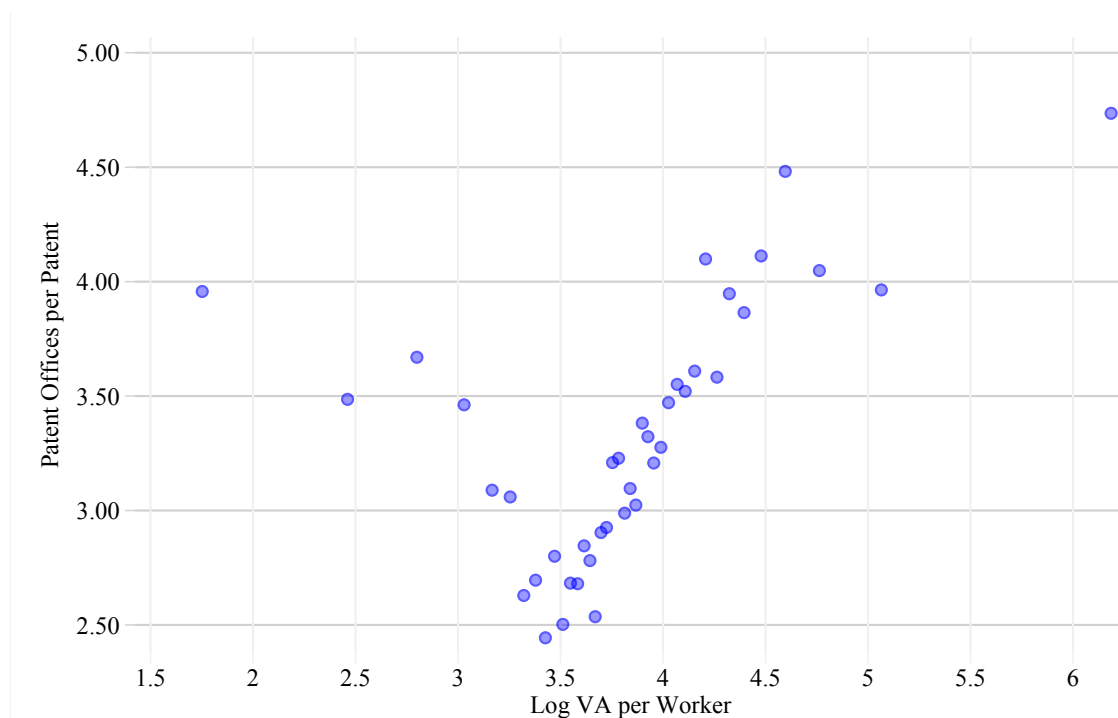
Notes: This figure presents the cumulative distribution of the log of the number of patent offices where firms apply for protection (summed over all patents).

tween the number of patent office submissions and firm level productivity measured by the value added divided by the number of employees. Figure D.2 depicts a binscatter of the log of the number of patent offices against the log of the firm's value added per worker. Each dot corresponds to a bin that contains 2.5 percent of the overall distribution of firm productivities. The figure shows that beyond the 15th percentile of firm-level productivities, patent quality measured by the number of patent offices is clearly positively correlated with labor productivity.

Next, one can look at the extent to which our measure of patent quality relates to the firm's ability and/or propensity to export to destinations that are further away from France. In Figure D.3 we group firms according to the average distance between France and the firms' export markets. Each color represents a different quartile on the scale of export distances. The figure shows a positive correlation between our measure of patent quality and the average export distance of a firm, which is consistent with the view that French firms with higher quality patents are willing to pay a higher trade cost to reach more remote export markets.

To address the concern that our measure of patent quality could reflect firm level characteristics other than patent quality per se, in Figure D.4 we regress the number of patent offices on a set of fixed effects. The figure shows that around 60% of the variance in the number of patent offices is unexplained by aggregate and firm level factors. Aggregate factors such as the year of application, techno-

Figure D.2: Relationship between labor productivity and the firm-level average number of patent offices per patent



Notes: This figure presents a binscatter of the relationship between labor productivity and the average number of patent offices per patent used by firms. Bin size is set at 2.5 percentiles.

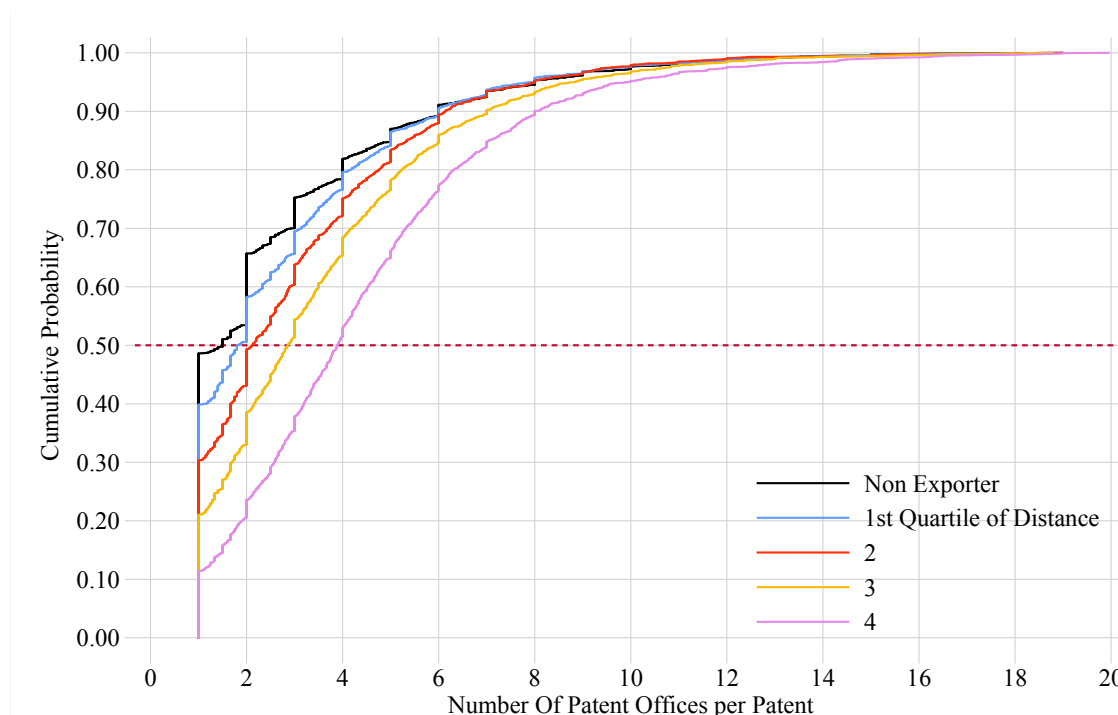
logical fields and the interaction between the two, only explains about 17% of the variance in the number of patent offices. A firm fixed effect only explains about 35% of the variance. The residual (60%), after controlling for all possible combinations of fixed effects, is by construction related to differences across patents within firms.

Figure D.5 shows the relationship between the number of patent offices used for a given patent and its total number of citations five years later. We see that the more patent offices a patent is applied to, the more citations it collects.

Heterogeneous effect of entry with respect to patent quality

Overall, Figures D.2, D.3 and D.4 provide support to using the number of patent offices per patent as a proxy for patent quality. We now look at the impact of a firm's average patent quality on how entry by firm affects subsequent citations to its patents by firms in destination countries. Presumably, firms with higher quality patents are more likely to induce follow-up innovations by firms in the destination countries, and therefore to generate more citations to their patents. To see this, we adapt the baseline regression to allow for varying coefficients with respect to the quality of the exporting firm's patents. More specifically, in Figure

Figure D.3: Relationship between the average distance to their export market and the firm average patent offices per patent



Notes: cumulative distribution of the number of patent offices per patent where firms apply for protection after grouping firms according to the average distance of their export market.

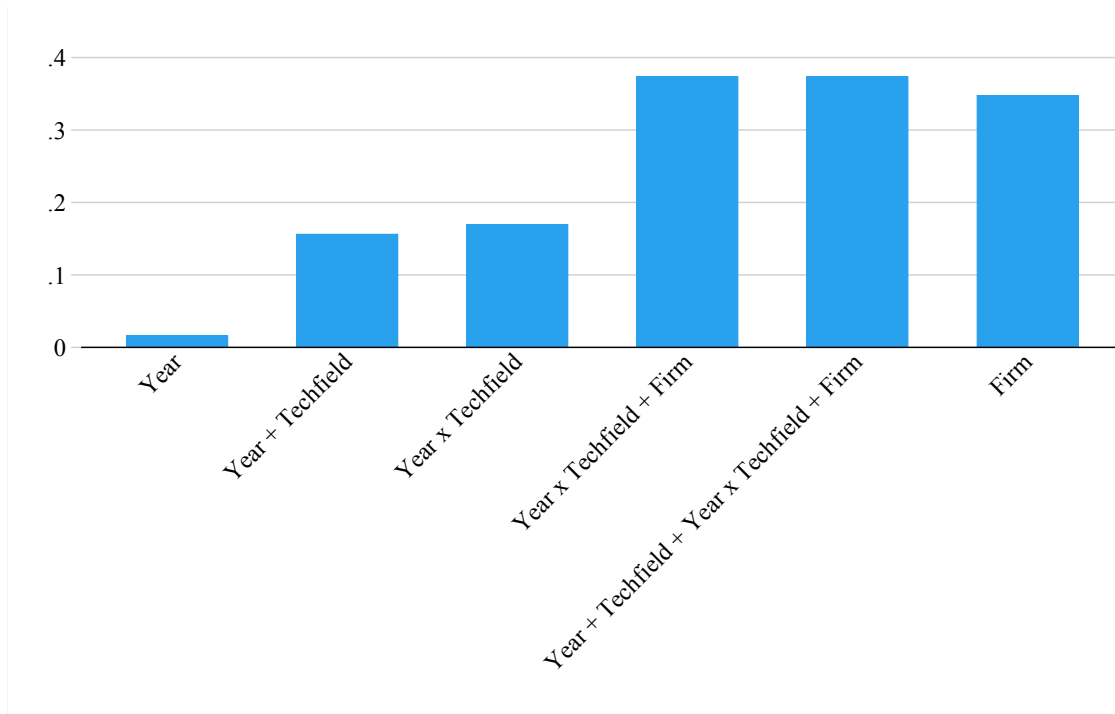
D.6 we combine the [de Chaisemartin and d’Haultfoeuille \(2020\)](#)’s estimator with a local linear estimation and use a kernel re-weighting scheme across levels of average patent quality. This kernel approach allows us to flexibly estimate the functional form of the marginal effect of entry on subsequent patent citations by firms in the destination countries, across level in average firm-level patent quality. The kernel is estimated with a bandwidth of κ .

Each point on the blue line in Figure D.6 corresponds to the effect of entry on subsequent citations estimated at a given level of firm’s average patent quality. We see that the higher the average quality of a French firm’s patents, the stronger the effect of entry by that firm on subsequent citations by firms in the destination countries.

D.2 Knowledge spillover and absorptive capacity

The transfer of knowledge from a French exporter to firms in the export destination is likely to depend upon the destination’s technological development relative to the French exporter. If firms in the destination country lag far behind the French firm, then presumably these firms are not adequately equipped to build on the French firm’s innovation, and therefore the French firm’s entry should

Figure D.4: Variance decomposition of patent quality



Notes: R^2 of regressions where the LHS variable is the number of patent offices where a patent is filed on various sets of fixed effects.

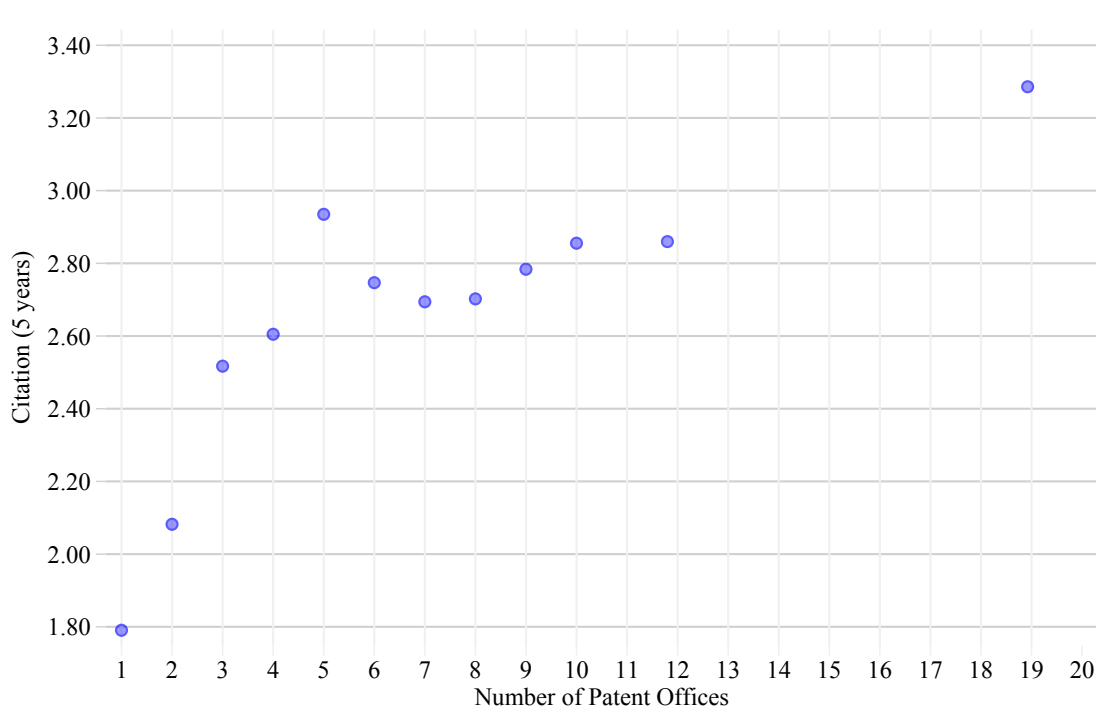
have a limited impact on innovation in the destination country. The French firm might even deter such innovation in the destination country due to the increased competition it induces for potential innovators in that country¹²: as a result, the impact of the French firm's entry on citations by firms in the destination country may even turn negative. On the other hand, if firms in the destination country are neck-and-neck with the French firm, then these firms can easily build upon the French firm's technology to generate new innovations: in that case entry by the French firm should increase citations by the destination country of the firm's innovations. Finally, if firms in the destination country are far ahead of the French firm's technology, then these firms will often not find it useful to develop further the French innovation as they already enjoy a better technology: entry by the French firm would then have little to no impact on its citations by firms in the destination country.¹³

To test for a differential impact of entry on citations varying with a destination's development level, we run a similar version of our baseline specification

¹²See [Aghion et al., 2005](#). See also [Van Patten \(2021\)](#) for a framework that incorporates heterogeneous learning abilities among importers

¹³All these developments should have different consequences for the destination firms' products as well, but the lack of data on those products prevents us from assessing such impacts. They also bring about different consequences for the French exporter's products, which we plan to investigate in future work.

Figure D.5: Patent Citations and Number of Patent offices



Notes: Binscatter of the number of patent offices where each patent was applied to and the number of citations each patent got 5 years after the application date.

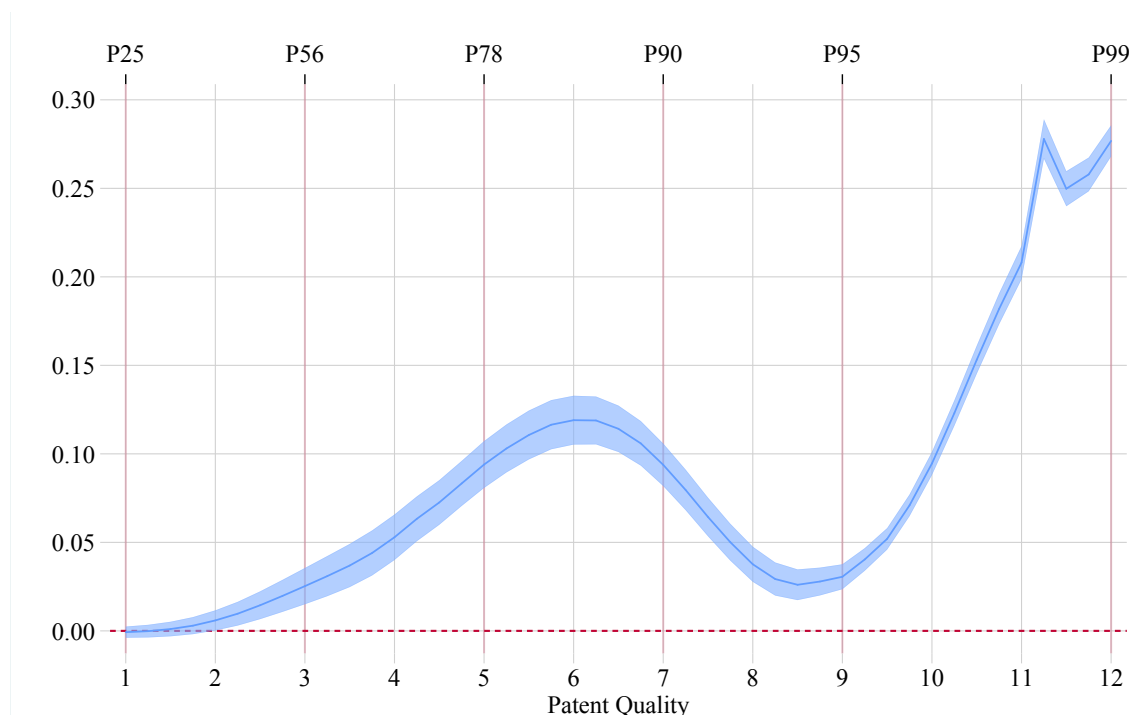
described above. But we now allow for our coefficient of interest to vary across the distribution of the destinations' distance to the firm in terms of patent quality. When the destination is far behind the firm, entry generates few citations (Figure D.7). When the destination and the firm are closely matched, entry increases citation the most. The effect decreases as technological distance increases, though it remains significantly positive.

D.3 Effect of entry on patent quality

Next, we look at the effect of the French firm's average patent quality on the quality of subsequent citations to the firm's patents by firms in the destination countries. For that purpose, we build a sample of all citations by firms in destination countries, not just the triadic citations used in our analysis so far. To measure the quality of a citing patent, we again use the number of patent offices the patent is submitted to: for example a citing patent submitted to one patent office counts for 1, whereas a citing patent submitted to three patent offices counts for 3. This gives us a quality weighted measure of citations.

We first estimate our baseline model with firm-year and destination-technological field-year fixed effects, but with quality-weighted citing patents as left-hand side variable. Figure D.8 shows that this quality-adjusted measure of subsequent cita-

Figure D.6: Relationship between patent quality and the effect of entry on citations



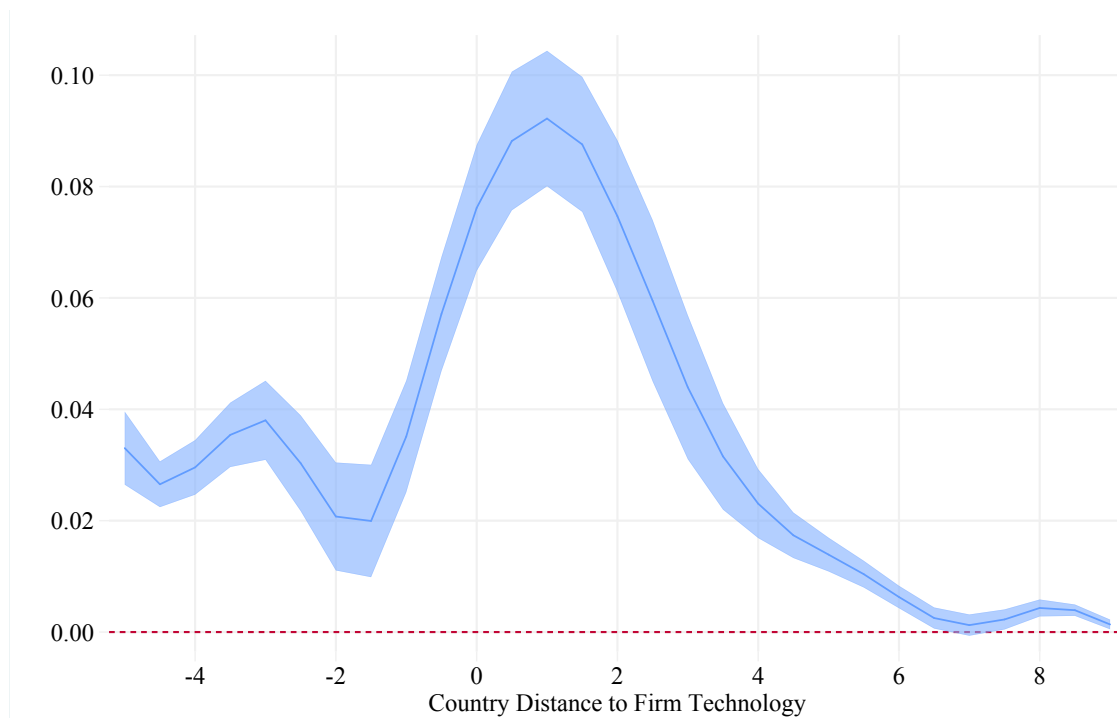
Notes: This figure presents estimates of the coefficient DID_k from Equation (2). The x-axis represents the value of the moderating variable. The coefficients are estimated locally along the support of the distribution of the firm level proxy for patent quality. 99% error bands, computed with robust standard errors clustered at the destination-sector level, are displayed as blue brackets.

tions evolves over time pretty much as the raw triadic citations to a French firm’s patent in our baseline regression, namely: (i) the pre-trends are flat and precisely estimated close to zero; (ii) the increase in quality-weighted citations is moderate during the first few years after entry by the French firm into the new foreign market; (iii) the quality-adjusted citations then increase sharply until year 10 after entry.

We further decompose the impact of the French firm entry on the quality-adjusted citations received from the destination countries into a “quantity component”, the number of citations by firms in destination countries, and a “quality component”, the average number of patent offices per citation in destination countries (Figure D.9). Most of the increase in quality-adjusted citations after entry comes from the quantity of citations. The quality contribution is positive but barely significant. The magnitudes of the effects uncovered are very large: after ten years, the citation rate is multiplied by 5.7, and given an increase in quality of 4.3%, the quality weighted citations are multiplied by 5.8.

Overall, the analysis in this subsection has several interesting implications. First it helps rule out that subsequent innovations post-entry would be purely

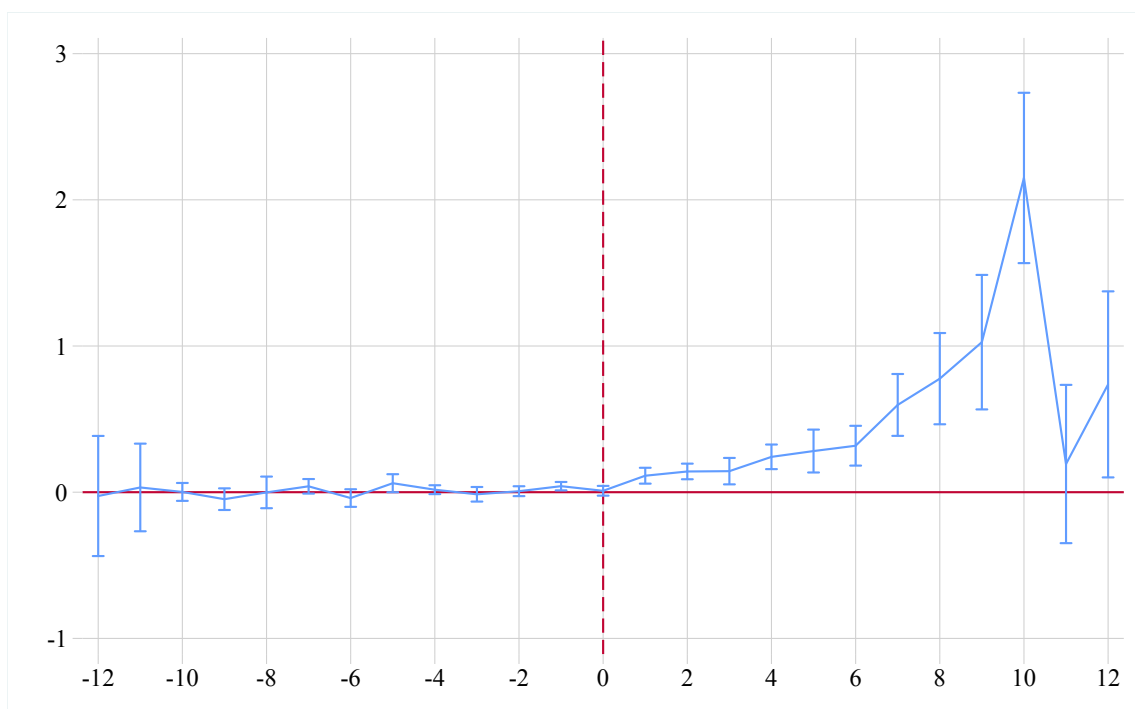
Figure D.7: Relationship between technological distance and the effect of entry on citations



Notes: This figure plots the effect of the initial entry into a foreign destination estimated locally at a given point of the ex-ante distribution of the firm-destination technological distance. The dependant variable is the number of citations. We use Gaussian weights with a bandwidth set to 0.5. 99% confidence interval are presented. Standard errors are clustered at the sector-country level.

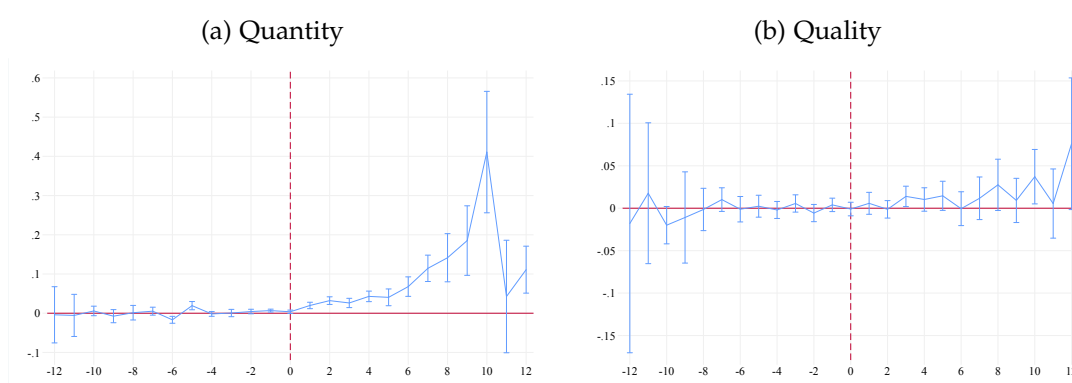
defensive or marginal improvements with low potential: if anything the quality of the citations increase with entry. Second, the higher effect of entry on citations for firms with higher quality technology has important implication in terms of “gains from trade”: not only do higher quality firms export to more destinations, but they also generate higher spillovers on inventors in destination countries. Additionally, such spillovers translate into both a higher number of citing patents and a higher quality of citing patents by firms in destination countries.

Figure D.8: Effect of Entry on quality weighted citations



Notes: This figure presents estimates of the coefficient DID_k from Equation (2). The x-axis represents the value of k , $k = 0$ being the first year the firm exports to country j . 99% error bands, computed with robust standard errors clustered at the destination-sector level, are displayed as blue brackets.

Figure D.9: Quantity versus Quality



Notes: Panel D.9a presents the results from estimating Equation 2 with the count of citations as outcome variable. Panel D.9b presents the results from the same estimation but with the citation quality proxy as outcome variable.

Liste des documents de travail de la Direction des Études et Synthèses Économiques

| | | | |
|--------|---|--------|---|
| G 9001 | J. FAYOLLE et M. FLEURBAEY Accumulation, profitabilité et endettement des entreprises | G 9202 | J. OLIVEIRA-MARTINS, J. TOUJAS-BERNATE Macro-economic import functions with imperfect competition - An application to the E.C. Trade |
| G 9002 | H. ROUSSE Détection et effets de la multicolinéarité dans les modèles linéaires ordinaires - Un prolongement de la réflexion de BELSLEY, KUH et WELSCH | G 9203 | I. STAPIC Les échanges internationaux de services de la France dans le cadre des négociations multilatérales du GATT Juin 1992 (1ère version) Novembre 1992 (version finale) |
| G 9003 | P. RALLE et J. TOUJAS-BERNATE Indexation des salaires : la rupture de 1983 | G 9204 | P. SEVESTRE L'économétrie sur données individuelles-temporelles. Une note introductive |
| G 9004 | D. GUELLEC et P. RALLE Compétitivité, croissance et innovation de produit | G 9205 | H. ERKEL-ROUSSE Le commerce extérieur et l'environnement international dans le modèle AMADEUS (réestimation 1992) |
| G 9005 | P. RALLE et J. TOUJAS-BERNATE Les conséquences de la désindexation. Analyse dans une maquette prix-salaires | G 9206 | N. GREENAN et D. GUELLEC Coordination within the firm and endogenous growth |
| G 9101 | Équipe AMADEUS Le modèle AMADEUS - Première partie - Présentation générale | G 9207 | A. MAGNIER et J. TOUJAS-BERNATE Technology and trade: empirical evidences for the major five industrialized countries |
| G 9102 | J.L. BRILLET Le modèle AMADEUS - Deuxième partie - Propriétés variantielles | G 9208 | B. CREPON, E. DUGUET, D. ENCAOUA et P. MOHNEN Cooperative, non cooperative R & D and optimal patent life |
| G 9103 | D. GUELLEC et P. RALLE Endogenous growth and product innovation | G 9209 | B. CREPON et E. DUGUET Research and development, competition and innovation: an application of pseudo maximum likelihood methods to Poisson models with heterogeneity |
| G 9104 | H. ROUSSE Le modèle AMADEUS - Troisième partie - Le commerce extérieur et l'environnement international | G 9301 | J. TOUJAS-BERNATE Commerce international et concurrence imparfaite : développements récents et implications pour la politique commerciale |
| G 9105 | H. ROUSSE Effets de demande et d'offre dans les résultats du commerce extérieur manufacturé de la France au cours des deux dernières décennies | G 9302 | Ch. CASES Durées de chômage et comportements d'offre de travail : une revue de la littérature |
| G 9106 | B. CREPON Innovation, taille et concentration : causalités et dynamiques | G 9303 | H. ERKEL-ROUSSE Union économique et monétaire : le débat économique |
| G 9107 | B. AMABLE et D. GUELLEC Un panorama des théories de la croissance endogène | G 9304 | N. GREENAN - D. GUELLEC / G. BROUSSAUDIER - L. MIOTTI Innovation organisationnelle, dynamisme technologique et performances des entreprises |
| G 9108 | M. GLAUDE et M. MOUTARDIER Une évaluation du coût direct de l'enfant de 1979 à 1989 | G 9305 | P. JAILLARD Le traité de Maastricht : présentation juridique et historique |
| G 9109 | P. RALLE et alii France - Allemagne : performances économiques comparées | G 9306 | J.L. BRILLET Micro-DMS : présentation et propriétés |
| G 9110 | J.L. BRILLET Micro-DMS NON PARU | G 9307 | J.L. BRILLET Micro-DMS - variantes : les tableaux |
| G 9111 | A. MAGNIER Effets accélérateur et multiplicateur en France depuis 1970 : quelques résultats empiriques | G 9308 | S. JACOBZONE Les grands réseaux publics français dans une perspective européenne |
| G 9112 | B. CREPON et G. DUREAU Investissement en recherche-développement : analyse de causalités dans un modèle d'accélérateur généralisé | G 9309 | L. BLOCH - B. CŒURÉ Profitabilité de l'investissement productif et transmission des chocs financiers |
| G 9113 | J.L. BRILLET, H. ERKEL-ROUSSE, J. TOUJAS-BERNATE "France-Allemagne Couplées" - Deux économies vues par une maquette macro-économétrique | G 9310 | J. BOURDIEU - B. COLIN-SEDILLOT Les théories sur la structure optimale du capital : quelques points de repère |
| G 9201 | W.J. ADAMS, B. CREPON, D. ENCAOUA Choix technologiques et stratégies de dissuasion d'entrée | | |

- G 9311 J. BOURDIEU - B. COLIN-SEDILLOT
Les décisions de financement des entreprises françaises : une évaluation empirique des théories de la structure optimale du capital
- G 9312 L. BLOCH - B. CŒURÉ
Q de Tobin marginal et transmission des chocs financiers
- G 9313 Équipes Amadeus (INSEE), Banque de France, Métric (DP)
Présentation des propriétés des principaux modèles macroéconomiques du Service Public
- G 9314 B. CREPON - E. DUGUET
Research & Development, competition and innovation
- G 9315 B. DORMONT
Quelle est l'influence du coût du travail sur l'emploi ?
- G 9316 D. BLANCHET - C. BROUSSE
Deux études sur l'âge de la retraite
- G 9317 D. BLANCHET
Répartition du travail dans une population hétérogène : deux notes
- G 9318 D. EYSSARTIER - N. PONTY
AMADEUS - an annual macro-economic model for the medium and long term
- G 9319 G. CETTE - Ph. CUNÉO - D. EYSSARTIER - J. GAUTIÉ
Les effets sur l'emploi d'un abaissement du coût du travail des jeunes
- G 9401 D. BLANCHET
Les structures par âge importent-elles ?
- G 9402 J. GAUTIÉ
Le chômage des jeunes en France : problème de formation ou phénomène de file d'attente ? Quelques éléments du débat
- G 9403 P. QUIRION
Les déchets en France : éléments statistiques et économiques
- G 9404 D. LADIRAY - M. GRUN-REHOMME
Lissage par moyennes mobiles - Le problème des extrémités de série
- G 9405 V. MAILLARD
Théorie et pratique de la correction des effets de jours ouvrables
- G 9406 F. ROSENWALD
La décision d'investir
- G 9407 S. JACOBZONE
Les apports de l'économie industrielle pour définir la stratégie économique de l'hôpital public
- G 9408 L. BLOCH, J. BOURDIEU, B. COLIN-SEDILLOT, G. LONGUEVILLE
Du défaut de paiement au dépôt de bilan : les banquiers face aux PME en difficulté
- G 9409 D. EYSSARTIER, P. MAIRE
Impacts macro-économiques de mesures d'aide au logement - quelques éléments d'évaluation
- G 9410 F. ROSENWALD
Suivi conjoncturel de l'investissement
- G 9411 C. DEFEUILLEY - Ph. QUIRION
Les déchets d'emballages ménagers : une analyse économique des politiques française et allemande
- G 9412 J. BOURDIEU - B. CŒURÉ - B. COLIN-SEDILLOT
Investissement, incertitude et irréversibilité
Quelques développements récents de la théorie de l'investissement
- G 9413 B. DORMONT - M. PAUCHET
L'évaluation de l'élasticité emploi-salaire dépend-elle des structures de qualification ?
- G 9414 I. KABLA
Le Choix de breveter une invention
- G 9501 J. BOURDIEU - B. CŒURÉ - B. SEDILLOT
Irreversible Investment and Uncertainty: When is there a Value of Waiting?
- G 9502 L. BLOCH - B. CŒURÉ
Imperfections du marché du crédit, investissement des entreprises et cycle économique
- G 9503 D. GOUX - E. MAURIN
Les transformations de la demande de travail par qualification en France
Une étude sur la période 1970-1993
- G 9504 N. GREENAN
Technologie, changement organisationnel, qualifications et emploi : une étude empirique sur l'industrie manufacturière
- G 9505 D. GOUX - E. MAURIN
Persistence des hiérarchies sectorielles de salaires: un réexamen sur données françaises
- G 9505 Bis D. GOUX - E. MAURIN
Persistence of inter-industry wages differentials: a reexamination on matched worker-firm panel data
- G 9506 S. JACOBZONE
Les liens entre RMI et chômage, une mise en perspective
NON PARU - article sorti dans Économie et Prévision n° 122 (1996) - pages 95 à 113
- G 9507 G. CETTE - S. MAHFOUZ
Le partage primaire du revenu
Constat descriptif sur longue période
- G 9601 Banque de France - CEPREMAP - Direction de la Prévision - Érasme - INSEE - OFCE
Structures et propriétés de cinq modèles macro-économiques français
- G 9602 Rapport d'activité de la DESE de l'année 1995
- G 9603 J. BOURDIEU - A. DRAZNIKS
L'octroi de crédit aux PME : une analyse à partir d'informations bancaires
- G 9604 A. TOPIOL-BENSAÏD
Les implantations japonaises en France
- G 9605 P. GENIER - S. JACOBZONE
Comportements de prévention, consommation d'alcool et tabagie : peut-on parler d'une gestion globale du capital santé ?
Une modélisation microéconométrique empirique
- G 9606 C. DOZ - F. LENGART
Factor analysis and unobserved component models: an application to the study of French business surveys

- G 9607 N. GREENAN - D. GUELLEC
La théorie coopérative de la firme
- G 9608 N. GREENAN - D. GUELLEC
Technological innovation and employment reallocation
- G 9609 Ph. COUR - F. RUPPRECHT
L'intégration asymétrique au sein du continent américain : un essai de modélisation
- G 9610 S. DUCHENE - G. FORGEOT - A. JACQUOT
Analyse des évolutions récentes de la productivité apparente du travail
- G 9611 X. BONNET - S. MAHFOUZ
The influence of different specifications of wages-prices spirals on the measure of the NAIRU: the case of France
- G 9612 PH. COUR - E. DUBOIS, S. MAHFOUZ, J. PISANI-FERRY
The cost of fiscal retrenchment revisited: how strong is the evidence?
- G 9613 A. JACQUOT
Les flexions des taux d'activité sont-elles seulement conjoncturelles ?
- G 9614 ZHANG Yingxiang - SONG Xueqing
Lexique macroéconomique Français-Chinois
- G 9701 J.L. SCHNEIDER
La taxe professionnelle : éléments de cadrage économique
- G 9702 J.L. SCHNEIDER
Transition et stabilité politique d'un système redistributif
- G 9703 D. GOUX - E. MAURIN
Train or Pay: Does it Reduce Inequalities to Encourage Firms to Train their Workers?
- G 9704 P. GENIER
Deux contributions sur dépendance et équité
- G 9705 E. DUGUET - N. IUNG
R & D Investment, Patent Life and Patent Value An Econometric Analysis at the Firm Level
- G 9706 M. HOUEBINE - A. TOPIOL-BENSAÏD
Les entreprises internationales en France : une analyse à partir de données individuelles
- G 9707 M. HOUEBINE
Polarisation des activités et spécialisation des départements en France
- G 9708 E. DUGUET - N. GREENAN
Le biais technologique : une analyse sur données individuelles
- G 9709 J.L. BRILLET
Analyzing a small French ECM Model
- G 9710 J.L. BRILLET
Formalizing the transition process: scenarios for capital accumulation
- G 9711 G. FORGEOT - J. GAUTIÉ
Insertion professionnelle des jeunes et processus de déclassement
- G 9712 E. DUBOIS
High Real Interest Rates: the Consequence of a Saving Investment Disequilibrium or of an insufficient Credibility of Monetary Authorities?
- G 9713 Bilan des activités de la Direction des Études et Synthèses Économiques - 1996
- G 9714 F. LEQUILLER
Does the French Consumer Price Index Overstate Inflation?
- G 9715 X. BONNET
Peut-on mettre en évidence les rigidités à la baisse des salaires nominaux ?
Une étude sur quelques grands pays de l'OCDE
- G 9716 N. IUNG - F. RUPPRECHT
Productivité de la recherche et rendements d'échelle dans le secteur pharmaceutique français
- G 9717 E. DUGUET - I. KABLA
Appropriation strategy and the motivations to use the patent system in France - An econometric analysis at the firm level
- G 9718 L.P. PELÉ - P. RALLE
Âge de la retraite : les aspects incitatifs du régime général
- G 9719 ZHANG Yingxiang - SONG Xueqing
Lexique macroéconomique français-chinois, chinois-français
- G 9720 M. HOUEBINE - J.L. SCHNEIDER
Mesurer l'influence de la fiscalité sur la localisation des entreprises
- G 9721 A. MOURougane
Crédibilité, indépendance et politique monétaire
Une revue de la littérature
- G 9722 P. AUGERAUD - L. BRIOT
Les données comptables d'entreprises
Le système intermédiaire d'entreprises
Passage des données individuelles aux données sectorielles
- G 9723 P. AUGERAUD - J.E. CHAPRON
Using Business Accounts for Compiling National Accounts: the French Experience
- G 9724 P. AUGERAUD
Les comptes d'entreprise par activités - Le passage aux comptes - De la comptabilité d'entreprise à la comptabilité nationale - A *paraître*
- G 9801 H. MICHAUDON - C. PRIGENT
Présentation du modèle AMADEUS
- G 9802 J. ACCARDO
Une étude de comptabilité générationnelle pour la France en 1996
- G 9803 X. BONNET - S. DUCHÊNE
Apports et limites de la modélisation
« Real Business Cycles »
- G 9804 C. BARLET - C. DUGUET - D. ENCAOUA - J. PRADEL
The Commercial Success of Innovations
An econometric analysis at the firm level in French manufacturing
- G 9805 P. CAHUC - Ch. GIANELLA - D. GOUX - A. ZILBERBERG
Equalizing Wage Differences and Bargaining Power - Evidence from a Panel of French Firms

- G 9806 J. ACCARDO - M. JLIASSI
La productivité globale des facteurs entre 1975 et 1996
- G 9807 Bilan des activités de la Direction des Études et Synthèses Économiques - 1997
- G 9808 A. MOUROUGANE
Can a Conservative Governor Conduct an Accommodative Monetary Policy?
- G 9809 X. BONNET - E. DUBOIS - L. FAUVET
Asymétrie des inflations relatives et menus costs : tests sur l'inflation française
- G 9810 E. DUGUET - N. IUNG
Sales and Advertising with Spillovers at the firm level: Estimation of a Dynamic Structural Model on Panel Data
- G 9811 J.P. BERTHIER
Congestion urbaine : un modèle de trafic de pointe à courbe débit-vitesse et demande élastique
- G 9812 C. PRIGENT
La part des salaires dans la valeur ajoutée : une approche macroéconomique
- G 9813 A.Th. AERTS
L'évolution de la part des salaires dans la valeur ajoutée en France reflète-t-elle les évolutions individuelles sur la période 1979-1994 ?
- G 9814 B. SALANIÉ
Guide pratique des séries non-stationnaires
- G 9901 S. DUCHÊNE - A. JACQUOT
Une croissance plus riche en emplois depuis le début de la décennie ? Une analyse en comparaison internationale
- G 9902 Ch. COLIN
Modélisation des carrières dans Destinie
- G 9903 Ch. COLIN
Évolution de la dispersion des salaires : un essai de prospective par microsimulation
- G 9904 B. CREPON - N. IUNG
Innovation, emploi et performances
- G 9905 B. CREPON - Ch. GIANELLA
Wages inequalities in France 1969-1992
An application of quantile regression techniques
- G 9906 C. BONNET - R. MAHIEU
Microsimulation techniques applied to inter-generational transfers - Pensions in a dynamic framework: the case of France
- G 9907 F. ROSENWALD
L'impact des contraintes financières dans la décision d'investissement
- G 9908 Bilan des activités de la DESE - 1998
- G 9909 J.P. ZOYEM
Contrat d'insertion et sortie du RMI
Évaluation des effets d'une politique sociale
- G 9910 Ch. COLIN - FI. LEGROS - R. MAHIEU
Bilans contributifs comparés des régimes de retraite du secteur privé et de la fonction publique
- G 9911 G. LAROQUE - B. SALANIÉ
Une décomposition du non-emploi en France
- G 9912 B. SALANIÉ
Une maquette analytique de long terme du marché du travail
- G 9912 Bis Ch. GIANELLA
Une estimation de l'élasticité de l'emploi peu qualifié à son coût
- G 9913 Division « Redistribution et Politiques Sociales »
Le modèle de microsimulation dynamique DESTINIE
- G 9914 E. DUGUET
Macro-commandes SAS pour l'économétrie des panels et des variables qualitatives
- G 9915 R. DUHAUTOIS
Évolution des flux d'emplois en France entre 1990 et 1996 : une étude empirique à partir du fichier des bénéficiaires réels normaux (BRN)
- G 9916 J.Y. FOURNIER
Extraction du cycle des affaires : la méthode de Baxter et King
- G 9917 B. CRÉPON - R. DESPLATZ - J. MAIRESSE
Estimating price cost margins, scale economies and workers' bargaining power at the firm level
- G 9918 Ch. GIANELLA - Ph. LAGARDE
Productivity of hours in the aggregate production function: an evaluation on a panel of French firms from the manufacturing sector
- G 9919 S. AUDRIC - P. GIVORD - C. PROST
Évolution de l'emploi et des coûts par qualification entre 1982 et 1996
- G 2000/01 R. MAHIEU
Les déterminants des dépenses de santé : une approche macroéconomique
- G 2000/02 C. ALLARD-PRIGENT - H. GUILMEAU - A. QUINET
The real exchange rate as the relative price of nontradables in terms of tradables: theoretical investigation and empirical study on French data
- G 2000/03 J.-Y. FOURNIER
L'approximation du filtre passe-bande proposée par Christiano et Fitzgerald
- G 2000/04 Bilan des activités de la DESE - 1999
- G 2000/05 B. CREPON - F. ROSENWALD
Investissement et contraintes de financement : le poids du cycle
Une estimation sur données françaises
- G 2000/06 A. FLIPO
Les comportements matrimoniaux de fait
- G 2000/07 R. MAHIEU - B. SÉDILLOT
Microsimulations of the retirement decision: a supply side approach
- G 2000/08 C. AUDENIS - C. PROST
Déficit conjoncturel : une prise en compte des conjonctures passées
- G 2000/09 R. MAHIEU - B. SÉDILLOT
Équivalent patrimonial de la rente et souscription de retraite complémentaire
- G 2000/10 R. DUHAUTOIS
Ralentissement de l'investissement : petites ou grandes entreprises ? industrie ou tertiaire ?

| | | | |
|-----------|---|----------|--|
| G 2000/11 | G. LAROQUE - B. SALANIÉ Temps partiel féminin et incitations financières à l'emploi | | revenus : le cas du "Panel européen des ménages » |
| G2000/12 | Ch. GIANELLA Local unemployment and wages | G2001/16 | J.-Y. FOURNIER - P. GIVORD La réduction des taux d'activité aux âges extrêmes, une spécificité française ? |
| G2000/13 | B. CREPON - Th. HECKEL - Informatisation en France : une évaluation à partir de données individuelles - Computerization in France: an evaluation based on individual company data | G2001/17 | C. AUDENIS - P. BISCOURP - N. RIEDINGER Existe-t-il une asymétrie dans la transmission du prix du brut aux prix des carburants ? |
| G2001/01 | F. LEQUILLER - La nouvelle économie et la mesure de la croissance du PIB - The new economy and the measurement of GDP growth | G2002/01 | F. MAGNIEN - J.-L. TAVERNIER - D. THESMAR Les statistiques internationales de PIB par habitant en standard de pouvoir d'achat : une analyse des résultats |
| G2001/02 | S. AUDRIC La reprise de la croissance de l'emploi profite-t-elle aussi aux non-diplômés ? | G2002/02 | Bilan des activités de la DESE - 2001 |
| G2001/03 | I. BRAUN-LEMAIRE Évolution et répartition du surplus de productivité | G2002/03 | B. SÉDILLOT - E. WALRAET La cessation d'activité au sein des couples : y a-t-il interdépendance des choix ? |
| G2001/04 | A. BEAUDU - Th. HECKEL Le canal du crédit fonctionne-t-il en Europe ? Une étude de l'hétérogénéité des comportements d'investissement à partir de données de bilan agrégées | G2002/04 | G. BRILHAULT - Rétropolation des séries de FBCF et calcul du capital fixe en SEC-95 dans les comptes nationaux français - Retropolation of the investment series (GFCF) and estimation of fixed capital stocks on the ESA-95 basis for the French balance sheets |
| G2001/05 | C. AUDENIS - P. BISCOURP - N. FOURCADE - O. LOISEL Testing the augmented Solow growth model: An empirical reassessment using panel data | G2002/05 | P. BISCOURP - B. CRÉPON - T. HECKEL - N. RIEDINGER How do firms respond to cheaper computers? Microeconomic evidence for France based on a production function approach |
| G2001/06 | R. MAHIEU - B. SÉDILLOT Départ à la retraite, irréversibilité et incertitude | G2002/06 | C. AUDENIS - J. DERUYON - N. FOURCADE L'impact des nouvelles technologies de l'information et de la communication sur l'économie française - un bouclage macro-économique |
| G2001/07 | Bilan des activités de la DESE - 2000 | G2002/07 | J. BARDAJI - B. SÉDILLOT - E. WALRAET Évaluation de trois réformes du Régime Général d'assurance vieillesse à l'aide du modèle de microsimulation DESTINIE |
| G2001/08 | J. Ph. GAUDEMET Les dispositifs d'acquisition à titre facultatif d'annuités viagères de retraite | G2002/08 | J.-P. BERTHIER Réflexions sur les différentes notions de volume dans les comptes nationaux : comptes aux prix d'une année fixe ou aux prix de l'année précédente, séries chaînées |
| G2001/09 | B. CRÉPON - Ch. GIANELLA Fiscalité, coût d'usage du capital et demande de facteurs : une analyse sur données individuelles | G2002/09 | F. HILD Les soldes d'opinion résument-ils au mieux les réponses des entreprises aux enquêtes de conjoncture ? |
| G2001/10 | B. CRÉPON - R. DESPLATZ Évaluation des effets des dispositifs d'allègements de charges sociales sur les bas salaires | G2002/10 | I. ROBERT-BOBÉE Les comportements démographiques dans le modèle de microsimulation Destinie - Une comparaison des estimations issues des enquêtes Jeunes et Carrières 1997 et Histoire Familiale 1999 |
| G2001/11 | J.-Y. FOURNIER Comparaison des salaires des secteurs public et privé | G2002/11 | J.-P. ZOYEM La dynamique des bas revenus : une analyse des entrées-sorties de pauvreté |
| G2001/12 | J.-P. BERTHIER - C. JAULENT R. CONVENEVOLE - S. PISANI Une méthodologie de comparaison entre consommations intermédiaires de source fiscale et de comptabilité nationale | G2002/12 | F. HILD Prévisions d'inflation pour la France |
| G2001/13 | P. BISCOURP - Ch. GIANELLA Substitution and complementarity between capital, skilled and less skilled workers: an analysis at the firm level in the French manufacturing industry | G2002/13 | M. LECLAIR Réduction du temps de travail et tensions sur les facteurs de production |
| G2001/14 | I. ROBERT-BOBÉE Modelling demographic behaviours in the French microsimulation model Destinie: An analysis of future change in completed fertility | G2002/14 | E. WALRAET - A. VINCENT - Analyse de la redistribution intragénérationnelle |
| G2001/15 | J.-P. ZOYEM Diagnostic sur la pauvreté et calendrier de | | |

- dans le système de retraite des salariés du privé
- Une approche par microsimulation
- Intragenerational distributional analysis in the french private sector pension scheme - A microsimulation approach
- G2002/15 P. CHONE - D. LE BLANC - I. ROBERT-BOBEE
Offre de travail féminine et garde des jeunes enfants
- G2002/16 F. MAUREL - S. GREGOIR
Les indices de compétitivité des pays : interprétation et limites
- G2003/01 N. RIEDINGER - E.HAUVY
Le coût de dépollution atmosphérique pour les entreprises françaises : Une estimation à partir de données individuelles
- G2003/02 P. BISCOURP et F. KRAMARZ
Création d'emplois, destruction d'emplois et internationalisation des entreprises industrielles françaises : une analyse sur la période 1986-1992
- G2003/03 Bilan des activités de la DESE - 2002
- G2003/04 P.-O. BEFFY - J. DERUYON - N. FOURCADE - S. GREGOIR - N. LAÏB - B. MONFORT
Évolutions démographiques et croissance : une projection macro-économique à l'horizon 2020
- G2003/05 P. AUBERT
La situation des salariés de plus de cinquante ans dans le secteur privé
- G2003/06 P. AUBERT - B. CRÉPON
Age, salaire et productivité
La productivité des salariés décline-t-elle en fin de carrière ?
- G2003/07 H. BARON - P.O. BEFFY - N. FOURCADE - R. MAHIEU
Le ralentissement de la productivité du travail au cours des années 1990
- G2003/08 P.-O. BEFFY - B. MONFORT
Patrimoine des ménages, dynamique d'allocation et comportement de consommation
- G2003/09 P. BISCOURP - N. FOURCADE
Peut-on mettre en évidence l'existence de rigidités à la baisse des salaires à partir de données individuelles ? Le cas de la France à la fin des années 90
- G2003/10 M. LECLAIR - P. PETIT
Présence syndicale dans les firmes : quel impact sur les inégalités salariales entre les hommes et les femmes ?
- G2003/11 P.-O. BEFFY - X. BONNET - M. DARRACQ-PARIES - B. MONFORT
MZE: a small macro-model for the euro area
- G2004/01 P. AUBERT - M. LECLAIR
La compétitivité exprimée dans les enquêtes trimestrielles sur la situation et les perspectives dans l'industrie
- G2004/02 M. DUÉE - C. REBILLARD
La dépendance des personnes âgées : une projection à long terme
- G2004/03 S. RASPILLER - N. RIEDINGER
Régulation environnementale et choix de localisation des groupes français
- G2004/04 A. NABOULET - S. RASPILLER
Les déterminants de la décision d'investir : une approche par les perceptions subjectives des firmes
- G2004/05 N. RAGACHE
La déclaration des enfants par les couples non mariés est-elle fiscalement optimale ?
- G2004/06 M. DUÉE
L'impact du chômage des parents sur le devenir scolaire des enfants
- G2004/07 P. AUBERT - E. CAROLI - M. ROGER
New Technologies, Workplace Organisation and the Age Structure of the Workforce: Firm-Level Evidence
- G2004/08 E. DUGUET - C. LELARGE
Les brevets accroissent-ils les incitations privées à innover ? Un examen microéconométrique
- G2004/09 S. RASPILLER - P. SILLARD
Affiliating versus Subcontracting: the Case of Multinationals
- G2004/10 J. BOISSINOT - C. L'ANGEVIN - B. MONFORT
Public Debt Sustainability: Some Results on the French Case
- G2004/11 S. ANANIAN - P. AUBERT
Travailleurs âgés, nouvelles technologies et changements organisationnels : un réexamen à partir de l'enquête « REPONSE »
- G2004/12 X. BONNET - H. PONCET
Structures de revenus et propensions différentes à consommer - Vers une équation de consommation des ménages plus robuste en prévision pour la France
- G2004/13 C. PICART
Évaluer la rentabilité des sociétés non financières
- G2004/14 J. BARDAJI - B. SÉDILLOT - E. WALRAET
Les retraites du secteur public : projections à l'horizon 2040 à l'aide du modèle de microsimulation DESTINIE
- G2005/01 S. BUFFETEAU - P. GODEFROY
Conditions de départ en retraite selon l'âge de fin d'études : analyse prospective pour les générations 1945 à 1974
- G2005/02 C. AFSA - S. BUFFETEAU
L'évolution de l'activité féminine en France : une approche par pseudo-panel
- G2005/03 P. AUBERT - P. SILLARD
Délocalisations et réductions d'effectifs dans l'industrie française
- G2005/04 M. LECLAIR - S. ROUX
Mesure et utilisation des emplois instables dans les entreprises
- G2005/05 C. L'ANGEVIN - S. SERRAVALLE
Performances à l'exportation de la France et de l'Allemagne - Une analyse par secteur et destination géographique
- G2005/06 Bilan des activités de la Direction des Études et Synthèses Économiques - 2004
- G2005/07 S. RASPILLER
La concurrence fiscale : principaux enseignements de l'analyse économique

| | | | |
|----------|--|----------|---|
| G2005/08 | C. L'ANGEVIN - N. LAÏB Éducation et croissance en France et dans un panel de 21 pays de l'OCDE | G2006/09 | X. BOUTIN - S. QUANTIN Une méthodologie d'évaluation comptable du coût du capital des entreprises françaises : 1984-2002 |
| G2005/09 | N. FERRARI Prévoir l'investissement des entreprises Un indicateur des révisions dans l'enquête de conjoncture sur les investissements dans l'industrie. | G2006/10 | C. AFSA L'estimation d'un coût implicite de la pénibilité du travail chez les travailleurs âgés |
| G2005/10 | P.-O. BEFFY - C. L'ANGEVIN Chômage et boucle prix-salaires : apport d'un modèle « qualifiés/peu qualifiés » | G2006/11 | C. LELARGE Les entreprises (industrielles) françaises sont-elles à la frontière technologique ? |
| G2005/11 | B. HEITZ A two-states Markov-switching model of inflation in France and the USA: credible target VS inflation spiral | G2006/12 | O. BIAU - N. FERRARI Théorie de l'opinion Faut-il pondérer les réponses individuelles ? |
| G2005/12 | O. BIAU - H. ERKEL-ROUSSE - N. FERRARI Réponses individuelles aux enquêtes de conjoncture et prévision macroéconomiques : Exemple de la prévision de la production manufacturière | G2006/13 | A. KOUBI - S. ROUX Une réinterprétation de la relation entre productivité et inégalités salariales dans les entreprises |
| G2005/13 | P. AUBERT - D. BLANCHET - D. BLAU The labour market after age 50: some elements of a Franco-American comparison | G2006/14 | R. RATHELOT - P. SILLARD The impact of local taxes on plants location decision |
| G2005/14 | D. BLANCHET - T. DEBRAND - P. DOURGNON - P. POLLET L'enquête SHARE : présentation et premiers résultats de l'édition française | G2006/15 | L. GONZALEZ - C. PICART Diversification, recentrage et poids des activités de support dans les groupes (1993-2000) |
| G2005/15 | M. DUÉE La modélisation des comportements démographiques dans le modèle de microsimulation DESTINIE | G2007/01 | D. SRAER Allègements de cotisations patronales et dynamique salariale |
| G2005/16 | H. RAOUI - S. ROUX Étude de simulation sur la participation versée aux salariés par les entreprises | G2007/02 | V. ALBOUY - L. LEQUIEN Les rendements non monétaires de l'éducation : le cas de la santé |
| G2006/01 | C. BONNET - S. BUFFETEAU - P. GODEFROY Disparités de retraite de droit direct entre hommes et femmes : quelles évolutions ? | G2007/03 | D. BLANCHET - T. DEBRAND Aspiration à la retraite, santé et satisfaction au travail : une comparaison européenne |
| G2006/02 | C. PICART Les gazelles en France | G2007/04 | M. BARLET - L. CRUSSON Quel impact des variations du prix du pétrole sur la croissance française ? |
| G2006/03 | P. AUBERT - B. CRÉPON - P. ZAMORA Le rendement apparent de la formation continue dans les entreprises : effets sur la productivité et les salaires | G2007/05 | C. PICART Flux d'emploi et de main-d'œuvre en France : un réexamen |
| G2006/04 | J.-F. OUVRARD - R. RATHELOT Demographic change and unemployment: what do macroeconomic models predict? | G2007/06 | V. ALBOUY - C. TAVAN Massification et démocratisation de l'enseignement supérieur en France |
| G2006/05 | D. BLANCHET - J.-F. OUVRARD Indicateurs d'engagements implicites des systèmes de retraite : chiffrages, propriétés analytiques et réactions à des chocs démographiques types | G2007/07 | T. LE BARBANCHON The Changing response to oil price shocks in France: a DSGE type approach |
| G2006/06 | G. BIAU - O. BIAU - L. ROUVIERE Nonparametric Forecasting of the Manufacturing Output Growth with Firm-level Survey Data | G2007/08 | T. CHANEY - D. SRAER - D. THESMAR Collateral Value and Corporate Investment Evidence from the French Real Estate Market |
| G2006/07 | C. AFSA - P. GIVORD Le rôle des conditions de travail dans les absences pour maladie | G2007/09 | J. BOISSINOT Consumption over the Life Cycle: Facts for France |
| G2006/08 | P. SILLARD - C. L'ANGEVIN - S. SERRAVALLE Performances comparées à l'exportation de la France et de ses principaux partenaires Une analyse structurelle sur 12 ans | G2007/10 | C. AFSA Interpréter les variables de satisfaction : l'exemple de la durée du travail |
| | | G2007/11 | R. RATHELOT - P. SILLARD Zones Franches Urbaines : quels effets sur l'emploi salarié et les créations d'établissements ? |
| | | G2007/12 | V. ALBOUY - B. CRÉPON Aléa moral en santé : une évaluation dans le cadre du modèle causal de Rubin |

| | | | |
|----------|---|----------|---|
| G2008/01 | C. PICART Les PME françaises : rentables mais peu dynamiques | G2009/06 | L. DAVEZIES - X. D'HAULTFOEUILLE Faut-il pondérer ?... Ou l'éternelle question de l'économètre confronté à des données d'enquête |
| G2008/02 | P. BISCOURP - X. BOUTIN - T. VERGÉ The Effects of Retail Regulations on Prices Evidence from the Loi Galland | G2009/07 | S. QUANTIN - S. RASPILLER - S. SERRAVALLE Commerce intragroupe, fiscalité et prix de transferts : une analyse sur données françaises |
| G2008/03 | Y. BARBESOL - A. BRIANT Économies d'agglomération et productivité des entreprises : estimation sur données individuelles françaises | G2009/08 | M. CLERC - V. MARCUS Élasticités-prix des consommations énergétiques des ménages |
| G2008/04 | D. BLANCHET - F. LE GALLO Les projections démographiques : principaux mécanismes et retour sur l'expérience française | G2009/09 | G. LALANNE - E. POULIQUEN - O. SIMON Prix du pétrole et croissance potentielle à long terme |
| G2008/05 | D. BLANCHET - F. TOUTLEMONDE Évolutions démographiques et déformation du cycle de vie active : quelles relations ? | G2009/10 | D. BLANCHET - J. LE CACHEUX - V. MARCUS Adjusted net savings and other approaches to sustainability: some theoretical background |
| G2008/06 | M. BARLET - D. BLANCHET - L. CRUSSON Internationalisation et flux d'emplois : que dit une approche comptable ? | G2009/11 | V. BELLAMY - G. CONSALES - M. FESSEAU - S. LE LAIDIER - É. RAYNAUD Une décomposition du compte des ménages de la comptabilité nationale par catégorie de ménage en 2003 |
| G2008/07 | C. LELARGE - D. SRAER - D. THESMAR Entrepreneurship and Credit Constraints - Evidence from a French Loan Guarantee Program | G2009/12 | J. BARDAJI - F. TALLET Detecting Economic Regimes in France: a Qualitative Markov-Switching Indicator Using Mixed Frequency Data |
| G2008/08 | X. BOUTIN - L. JANIN Are Prices Really Affected by Mergers? | G2009/13 | R. AEBERHARDT - D. FOUGÈRE - R. RATHELOT Discrimination à l'embauche : comment exploiter les procédures de <i>testing</i> ? |
| G2008/09 | M. BARLET - A. BRIANT - L. CRUSSON Concentration géographique dans l'industrie manufacturière et dans les services en France : une approche par un indicateur en continu | G2009/14 | Y. BARBESOL - P. GIVORD - S. QUANTIN Partage de la valeur ajoutée, approche par données microéconomiques |
| G2008/10 | M. BEFFY - É. COUDIN - R. RATHELOT Who is confronted to insecure labor market histories? Some evidence based on the French labor market transition | G2009/15 | I. BUONO - G. LALANNE The Effect of the Uruguay round on the Intensive and Extensive Margins of Trade |
| G2008/11 | M. ROGER - E. WALRAET Social Security and Well-Being of the Elderly: the Case of France | G2010/01 | C. MINODIER Avantages comparés des séries des premières valeurs publiées et des séries des valeurs révisées - Un exercice de prévision en temps réel de la croissance trimestrielle du PIB en France |
| G2008/12 | C. AFSA Analyser les composantes du bien-être et de son évolution Une approche empirique sur données individuelles | G2010/02 | V. ALBOUY - L. DAVEZIES - T. DEBRAND Health Expenditure Models: a Comparison of Five Specifications using Panel Data |
| G2008/13 | M. BARLET - D. BLANCHET - T. LE BARBANCHON Microsimuler le marché du travail : un prototype | G2010/03 | C. KLEIN - O. SIMON Le modèle MÉSANGE réestimé en base 2000 Tome 1 – Version avec volumes à prix constants |
| G2009/01 | P.-A. PIONNIER Le partage de la valeur ajoutée en France, 1949-2007 | G2010/04 | M.-É. CLERC - É. COUDIN L'IPC, miroir de l'évolution du coût de la vie en France ? Ce qu'apporte l'analyse des courbes d'Engel |
| G2009/02 | Laurent CLAVEL - Christelle MINODIER A Monthly Indicator of the French Business Climate | G2010/05 | N. CECI-RENAUD - P.-A. CHEVALIER Les seuils de 10, 20 et 50 salariés : impact sur la taille des entreprises françaises |
| G2009/03 | H. ERKEL-ROUSSE - C. MINODIER Do Business Tendency Surveys in Industry and Services Help in Forecasting GDP Growth? A Real-Time Analysis on French Data | G2010/06 | R. AEBERHARDT - J. POUGET National Origin Differences in Wages and Hierarchical Positions - Evidence on French Full-Time Male Workers from a matched Employer-Employee Dataset |
| G2009/04 | P. GIVORD - L. WILNER Les contrats temporaires : trappe ou marche-pied vers l'emploi stable ? | | |
| G2009/05 | G. LALANNE - P.-A. PIONNIER - O. SIMON Le partage des fruits de la croissance de 1950 à 2008 : une approche par les comptes de surplus | | |

| | | | |
|----------|---|----------|---|
| G2010/07 | S. BLASCO - P. GIVORD Les trajectoires professionnelles en début de vie active : quel impact des contrats temporaires ? | | L'impact des perturbations financières de 2007 et 2008 sur la croissance de sept pays industrialisés |
| G2010/08 | P. GIVORD Méthodes économétriques pour l'évaluation de politiques publiques | G2011/06 | P. CHARNOZ - É. COUDIN - M. GAINI Wage inequalities in France 1976-2004: a quantile regression analysis |
| G2010/09 | P.-Y. CABANNES - V. LAPÈGUE - E. POULIQUEN - M. BEFFY - M. GAINI Quelle croissance de moyen terme après la crise ? | G2011/07 | M. CLERC - M. GAINI - D. BLANCHET Recommendations of the Stiglitz-Sen-Fitoussi Report: A few illustrations |
| G2010/10 | I. BUONO - G. LALANNE La réaction des entreprises françaises à la baisse des tarifs douaniers étrangers | G2011/08 | M. BACHELET - M. BEFFY - D. BLANCHET Projeter l'impact des réformes des retraites sur l'activité des 55 ans et plus : une comparaison de trois modèles |
| G2010/11 | R. RATHELOT - P. SILLARD L'apport des méthodes à noyaux pour mesurer la concentration géographique - Application à la concentration des immigrés en France de 1968 à 1999 | G2011/09 | C. LOUVOT-RUNAVOT L'évaluation de l'activité dissimulée des entreprises sur la base des contrôles fiscaux et son insertion dans les comptes nationaux |
| G2010/12 | M. BARATON - M. BEFFY - D. FOUGÈRE Une évaluation de l'effet de la réforme de 2003 sur les départs en retraite - Le cas des enseignants du second degré public | G2011/10 | A. SCHREIBER - A. VICARD La tertiarisation de l'économie française et le ralentissement de la productivité entre 1978 et 2008 |
| G2010/13 | D. BLANCHET - S. BUFFETEAU - E. CRENNER S. LE MINEZ Le modèle de microsimulation Destinie 2 : principales caractéristiques et premiers résultats | G2011/11 | M.-É. CLERC - O. MONSO - E. POULIQUEN Les inégalités entre générations depuis le baby-boom |
| G2010/14 | D. BLANCHET - E. CRENNER Le bloc retraites du modèle Destinie 2 : guide de l'utilisateur | G2011/12 | C. MARBOT - D. ROY Évaluation de la transformation de la réduction d'impôt en crédit d'impôt pour l'emploi de salariés à domicile en 2007 |
| G2010/15 | M. BARLET - L. CRUSSON - S. DUPUCH - F. PUECH Des services échangés aux services échangeables : une application sur données françaises | G2011/13 | P. GIVORD - R. RATHELOT - P. SILLARD Place-based tax exemptions and displacement effects: An evaluation of the Zones Franches Urbaines program |
| G2010/16 | M. BEFFY - T. KAMIONKA Public-private wage gaps: is civil-servant human capital sector-specific? | G2011/14 | X. D'HAULTFOEUILLE - P. GIVORD - X. BOUTIN The Environmental Effect of Green Taxation: the Case of the French "Bonus/Malus" |
| G2010/17 | P.-Y. CABANNES - H. ERKEL-ROUSSE - G. LALANNE - O. MONSO - E. POULIQUEN Le modèle Mésange réestimé en base 2000 Tome 2 - Version avec volumes à prix chaînés | G2011/15 | M. BARLET - M. CLERC - M. GARNEO - V. LAPÈGUE - V. MARCUS La nouvelle version du modèle MZE, modèle macroéconométrique pour la zone euro |
| G2010/18 | R. AEBERHARDT - L. DAVEZIES Conditional Logit with one Binary Covariate: Link between the Static and Dynamic Cases | G2011/16 | R. AEBERHARDT - I. BUONO - H. FADINGER Learning, Incomplete Contracts and Export Dynamics: Theory and Evidence from French Firms |
| G2011/01 | T. LE BARBANCHON - B. OURLIAC - O. SIMON Les marchés du travail français et américain face aux chocs conjoncturels des années 1986 à 2007 : une modélisation DSGE | G2011/17 | C. KERDRAIN - V. LAPÈGUE Restrictive Fiscal Policies in Europe: What are the Likely Effects? |
| G2011/02 | C. MARBOT Une évaluation de la réduction d'impôt pour l'emploi de salariés à domicile | G2012/01 | P. GIVORD - S. QUANTIN - C. TREVIEN A Long-Term Evaluation of the First Generation of the French Urban Enterprise Zones |
| G2011/03 | L. DAVEZIES Modèles à effets fixes, à effets aléatoires, modèles mixtes ou multi-niveaux : propriétés et mises en œuvre des modélisations de l'hétérogénéité dans le cas de données groupées | G2012/02 | N. CECI-RENAUD - V. COTTET Politique salariale et performance des entreprises |
| G2011/04 | M. ROGER - M. WASMER Heterogeneity matters: labour productivity differentiated by age and skills | G2012/03 | P. FÉVRIER - L. WILNER Do Consumers Correctly Expect Price Reductions? Testing Dynamic Behavior |
| G2011/05 | J.-C. BRICONGNE - J.-M. FOURNIER V. LAPÈGUE - O. MONSO De la crise financière à la crise économique | G2012/04 | M. GAINI - A. LEDUC - A. VICARD School as a shelter? School leaving-age and the business cycle in France |
| | | G2012/05 | M. GAINI - A. LEDUC - A. VICARD A scarred generation? French evidence on young people entering into a tough labour market |

| | | | |
|----------------|---|-----------|--|
| G2012/06 | P. AUBERT - M. BACHELET Disparités de montant de pension et redistribution dans le système de retraite français | G2013/09 | J-B. BERNARD - G. CLÉAUD Oil price: the nature of the shocks and the impact on the French economy |
| G2012/07 | R. AEBERHARDT - P. GIVORD - C. MARBOT Spillover Effect of the Minimum Wage in France: An Unconditional Quantile Regression Approach | G2013/10 | G. LAME Was there a « Greenspan Conundrum » in the Euro area? |
| G2012/08 | A. EIDELMAN - F. LANGUMIER - A. VICARD Prélèvements obligatoires reposant sur les ménages : des canaux redistributifs différents en 1990 et 2010 | G2013/11 | P. CHONÉ - F. EVAIN - L. WILNER - E. YILMAZ Introducing activity-based payment in the hospital industry : Evidence from French data |
| G2012/09 | O. BARGAIN - A. VICARD Le RMI et son successeur le RSA découragent-ils certains jeunes de travailler ? Une analyse sur les jeunes autour de 25 ans | G2013/12 | C. GRISLAIN-LETRÉMY Natural Disasters: Exposure and Underinsurance |
| G2012/10 | C. MARBOT - D. ROY Projections du coût de l'APA et des caractéristiques de ses bénéficiaires à l'horizon 2040 à l'aide du modèle Destinie | G2013/13 | P.-Y. CABANNES - V. COTTET - Y. DUBOIS - C. LELARGE - M. SICSIC French Firms in the Face of the 2008/2009 Crisis |
| G2012/11 | A. MAUROUX Le crédit d'impôt dédié au développement durable : une évaluation économétrique | G2013/14 | A. POISSONNIER - D. ROY Households Satellite Account for France in 2010. Methodological issues on the assessment of domestic production |
| G2012/12 | V. COTTET - S. QUANTIN - V. RÉGNIER Coût du travail et allègements de charges : une estimation au niveau établissement de 1996 à 2008 | G2013/15 | G. CLÉAUD - M. LEMOINE - P.-A. PIONNIER Which size and evolution of the government expenditure multiplier in France (1980-2010)? |
| G2012/13 | X. D'HAULTFOEUILLE - P. FÉVRIER - L. WILNER Demand Estimation in the Presence of Revenue Management | G2014/01 | M. BACHELET - A. LEDUC - A. MARINO Les biographies du modèle Destinie II : rebasage et projection |
| G2012/14 | D. BLANCHET - S. LE MINEZ Joint macro/micro evaluations of accrued-to-date pension liabilities: an application to French reforms | G2014/02 | B. GARBINTI L'achat de la résidence principale et la création d'entreprises sont-ils favorisés par les donations et héritages ? |
| G2013/01-F1301 | T. DEROYON - A. MONTAUT - P-A PIONNIER Utilisation rétrospective de l'enquête Emploi à une fréquence mensuelle : apport d'une modélisation espace-état | G2014/03 | N. CECI-RENAUD - P. CHARNOZ - M. GAINI Évolution de la volatilité des revenus salariaux du secteur privé en France depuis 1968 |
| G2013/02-F1302 | C. TREVIEN Habiter en HLM : quel avantage monétaire et quel impact sur les conditions de logement ? | G2014/04 | P. AUBERT Modalités d'application des réformes des retraites et prévisibilité du montant de pension |
| G2013/03 | A. POISSONNIER Temporal disaggregation of stock variables - The Chow-Lin method extended to dynamic models | G2014/05 | C. GRISLAIN-LETRÉMY - A. KATOSSKY The Impact of Hazardous Industrial Facilities on Housing Prices: A Comparison of Parametric and Semiparametric Hedonic Price Models |
| G2013/04 | P. GIVORD - C. MARBOT Does the cost of child care affect female labor market participation? An evaluation of a French reform of childcare subsidies | G2014//06 | J.-M. DAUSSIN-BENICHOU - A. MAUROUX Turning the heat up. How sensitive are households to fiscal incentives on energy efficiency investments? |
| G2013/05 | G. LAME - M. LEQUIEN - P.-A. PIONNIER Interpretation and limits of sustainability tests in public finance | G2014/07 | C. LABONNE - G. LAMÉ Credit Growth and Capital Requirements: Binding or Not? |
| G2013/06 | C. BELLEGO - V. DORTET-BERNADET La participation aux pôles de compétitivité : quelle incidence sur les dépenses de R&D et l'activité des PME et ETI ? | G2014/08 | C. GRISLAIN-LETRÉMY et C. TREVIEN The Impact of Housing Subsidies on the Rental Sector: the French Example |
| G2013/07 | P.-Y. CABANNES - A. MONTAUT - P.-A. PIONNIER Évaluer la productivité globale des facteurs en France : l'apport d'une mesure de la qualité du capital et du travail | G2014/09 | M. LEQUIEN et A. MONTAUT Croissance potentielle en France et en zone euro : un tour d'horizon des méthodes d'estimation |
| G2013/08 | R. AEBERHARDT - C. MARBOT Evolution of Instability on the French Labour Market During the Last Thirty Years | G2014/10 | B. GARBINTI - P. LAMARCHE Les hauts revenus épargnent-ils davantage ? |
| | | G2014/11 | D. AUDENAERT - J. BARDAJI - R. LARDEUX - M. ORAND - M. SICSIC Wage Resilience in France since the Great Recession |
| | | G2014/12 | F. ARNAUD - J. BOUSSARD - A. POISSONNIER - H. SOUAL |

| | | | |
|----------|--|----------|---|
| | Computing additive contributions to growth and other issues for chain-linked quarterly aggregates | G2015/15 | C. GEAY - M. KOUBI - G de LAGASNERIE Projections des dépenses de soins de ville, construction d'un module pour Destinie |
| G2014/13 | H. FRAISSE - F. KRAMARZ - C. PROST Labor Disputes and Job Flows | G2015/16 | J. BARDAJI - J.-C. BRICONGNE - B. CAMPAGNE - G. GAULIER Compared performances of French companies on the domestic and foreign markets |
| G2014/14 | P. GIVORD - C. GRISLAIN-LETRÉMY - H. NAEGELE How does fuel taxation impact new car purchases? An evaluation using French consumer-level dataset | G2015/17 | C. BELLÉGO - R. DE NIJS The redistributive effect of online piracy on the box office performance of American movies in foreign markets |
| G2014/15 | P. AUBERT - S. RABATÉ Durée passée en carrière et durée de vie en retraite : quel partage des gains d'espérance de vie ? | G2015/18 | J.-B. BERNARD - L. BERTHET French households financial wealth: which changes in 20 years? |
| G2015/01 | A. POISSONNIER The walking dead Euler equation Addressing a challenge to monetary policy models | G2015/19 | M. POULHÈS <i>Fenêtre sur Cour</i> ou <i>Chambre avec Vue</i> ? Les prix hédoniques de l'immobilier parisien |
| G2015/02 | Y. DUBOIS - A. MARINO Indicateurs de rendement du système de retraite français | G2016/01 | B. GARBINTI - S. GEORGES-KOT Time to smell the roses? Risk aversion, the timing of inheritance receipt, and retirement |
| G2015/03 | T. MAYER - C. TREVIEN The impacts of Urban Public Transportation: Evidence from the Paris Region | G2016/02 | P. CHARNOZ - C. LELARGE - C. TREVIEN Communication Costs and the Internal Organization of Multi-Plant Businesses: Evidence from the Impact of the French High-Speed Rail |
| G2015/04 | S.T. LY - A. RIEGERT Measuring Social Environment Mobility | G2016/03 | C. BONNET - B. GARBINTI - A. SOLAZ Gender Inequality after Divorce: The Flip Side of Marital Specialization - Evidence from a French Administrative Database |
| G2015/05 | M. A. BEN HALIMA - V. HYAFIL-SOLELHAC M. KOUBI - C. REGAERT Quel est l'impact du système d'indemnisation maladie sur la durée des arrêts de travail pour maladie ? | G2016/04 | D. BLANCHET - E. CAROLI - C. PROST - M. ROGER Health capacity to work at older ages in France |
| G2015/06 | Y. DUBOIS - A. MARINO Disparités de rendement du système de retraite dans le secteur privé : approches intergénérationnelle et intragénérationnelle | G2016/05 | B. CAMPAGNE - A. POISSONNIER MELEZE: A DSGE model for France within the Euro Area |
| G2015/07 | B. CAMPAGNE - V. ALHENC-GELAS - J.-B. BERNARD No evidence of financial accelerator in France | G2016/06 | B. CAMPAGNE - A. POISSONNIER Laffer curves and fiscal multipliers: lessons from Mèlèze model |
| G2015/08 | Q. LAFFÉTER - M. PAK Élasticités des recettes fiscales au cycle économique : étude de trois impôts sur la période 1979-2013 en France | G2016/07 | B. CAMPAGNE - A. POISSONNIER Structural reforms in DSGE models: a case for sensitivity analyses |
| G2015/09 | J.-M. DAUSSIN-BENICHOU, S. IDMACHICHE, A. LEDUC et E. POULIQUEN Les déterminants de l'attractivité de la fonction publique de l'État | G2016/08 | Y. DUBOIS et M. KOUBI Relèvement de l'âge de départ à la retraite : quel impact sur l'activité des seniors de la réforme des retraites de 2010 ? |
| G2015/10 | P. AUBERT La modulation du montant de pension selon la durée de carrière et l'âge de la retraite : quelles disparités entre assurés ? | G2016/09 | A. NAOUAS - M. ORAND - I. SLIMANI HOUTI Les entreprises employant des salariés au Smic : quelles caractéristiques et quelle rentabilité ? |
| G2015/11 | V. DORTET-BERNADET - M. SICSIC Effet des aides publiques sur l'emploi en R&D dans les petites entreprises | G2016/10 | T. BLANCHET - Y. DUBOIS - A. MARINO - M. ROGER Patrimoine privé et retraite en France |
| G2015/12 | S. GEORGES-KOT Annual and lifetime incidence of the value-added tax in France | G2016/11 | M. PAK - A. POISSONNIER Accounting for technology, trade and final consumption in employment: an Input-Output decomposition |
| G2015/13 | M. POULHÈS Are Enterprise Zones Benefits Capitalized into Commercial Property Values? The French Case | G2017/01 | D. FOUGÈRE - E. GAUTIER - S. ROUX Understanding Wage Floor Setting in Industry-Level Agreements: Evidence from France |
| G2015/14 | J.-B. BERNARD - Q. LAFFÉTER Effet de l'activité et des prix sur le revenu salarial des différentes catégories socioprofessionnelles | G2017/02 | Y. DUBOIS - M. KOUBI Règles d'indexation des pensions et sensibilité des dépenses de retraites à la croissance économique et aux chocs démographiques |

- G2017/03 A. CAZENAVE-LACROUTZ - F. GODET
L'espérance de vie en retraite sans incapacité sévère des générations nées entre 1960 et 1990 : une projection à partir du modèle Destinie
- G2017/04 J. BARDAJI - B. CAMPAGNE - M.-B. KHDER - Q. LAFFÉTER - O. SIMON (Insee)
A.-S. DUFRERNEZ - C. ELEZAAR - P. LEBLANC - E. MASSON - H. PARTOUCHE (DG-Trésor)
Le modèle macroéconométrique Mésange : réestimation et nouveautés
- G2017/05 J. BOUSSARD - B. CAMPAGNE
Fiscal Policy Coordination in a Monetary Union at the Zero-Lower-Bound
- G2017/06 A. CAZENAVE-LACROUTZ - A. GODZINSKI
Effects of the one-day waiting period for sick leave on health-related absences in the French central civil service
- G2017/07 P. CHARNOZ - M. ORAND
Qualification, progrès technique et marchés du travail locaux en France, 1990-2011
- G2017/08 K. MILIN
Modélisation de l'inflation en France par une approche macrosectorielle
- G2017/09 C.-M. CHEVALIER - R. LARDEUX
Homeownership and labor market outcomes: disentangling externality and composition effects
- G2017/10 P. BEAUMONT
Time is Money: Cash-Flow Risk and Export Market Behavior
- G2018/01 S. ROUX - F. SAVIGNAC
SMEs' financing: Divergence across Euro area countries?
- G2018/02 C.-M. CHEVALIER - A. LUCIANI
Computerization, labor productivity and employment: impacts across industries vary with technological level
- G2018/03 R. MONIN - M. SUAREZ CASTILLO
L'effet du CICE sur les prix : une double analyse sur données sectorielles et individuelles
- G2018/04 R. LARDEUX
Who Understands The French Income Tax? Bunching Where Tax Liabilities Start
- G2018/05 C.-M. CHEVALIER
Financial constraints of innovative firms and sectoral growth
- G2018/06 R. S.-H. LEE - M. PAK
Pro-competitive effects of globalisation on prices, productivity and markups: Evidence in the Euro Area
- G2018/07 C.-M. CHEVALIER
Consumption inequality in France between 1995 and 2011
- G2018/08 A. BAUER - B. GARBINTI - S. GEORGES-KOT
Financial Constraints and Self-Employment in France, 1945-2014
- G2018/09 P. BEAUMONT – A. LUCIANI
Prime à l'embauche dans les PME : évaluation à partir des déclarations d'embauche
- G2018/10 C BELLÉGO – V. DORTET-BERNADET - M. TÉPAUT
Comparaison de deux dispositifs d'aide à la R&D collaborative public-privé
- G2018/11 R. MONIN – M. SUAREZ CASTILLO
Réplication et rapprochement des travaux d'évaluation de l'effet du CICE sur l'emploi en 2013 et 2014
- G2018/12 A. CAZENAVE-LACROUTZ - F. GODET – V. LIN
L'introduction d'un gradient social dans la mortalité au sein du modèle Destinie 2
- G2019/01 F1901 M. ANDRÉ – A.-L. BIOTTEAU
Effets de moyen terme d'une hausse de TVA sur le niveau de vie et les inégalités : une approche par microsimulation
- G2019/02 A. BOURGEOIS – A. BRIAND
Le modèle Avionic : la modélisation Input/Output des comptes nationaux
- G2019/03 A. GODZINSKI – M. SUAREZ CASTILLO
Short-term health effects of public transport disruptions: air pollution and viral spread channels
- G2019/04 F1903 L. AEBERHARDT - F. HATIER - M. LECLAIR - B. PENTINAT - J.-D. ZAFAR
L'économie numérique fausse-t-elle le partage volume-prix du PIB ?
- G2019/05 A. CAZENAVE-LACROUTZ – E. YILMAZ
Dans quelle mesure les incitations tarifaires et la procédure de mise sous accord préalable ont-elles contribué au développement de la chirurgie ambulatoire ?
- G2019/06 J.-P. CLING – S. EGHBAL-TEHERANI – M. ORZONI – C. PLATEAU
The Differences between EU Countries for Sustainable Development Indicators: It is (mainly) the Economy!
- G2019/07 P. CHONÉ – L. WILNER
Competition on Unobserved Attributes: The Case of the Hospital Industry
- G2019/08 P. PORA – L. WILNER
Child Penalties and Financial Incentives: Exploiting Variation along the Wage Distribution
- G2019/09 E. GAUTIER – S. ROUX – M. SUAREZ CASTILLO
Do Minimum Wages make Wages more Rigid ? Evidence from French Micro Data
- G2019/10 M. ANDRÉ – A. SIREYJOL

| | | | |
|----------|---|----------|--|
| | Imposition des couples et des familles : effets budgétaires et redistributifs de l'impôt sur le revenu | G2020/11 | P. AGHION – A. BERGEAUD M. LEQUIEN – M. J. MELITZ |
| G2019/11 | K. MOHKAM – O. SIMON L'empreinte matière de l'économie française : une analyse par matière et catégorie de produits | | The Heterogeneous Impact of Market Size on Innovation: Evidence from French Firm-Level Exports |
| G2019/12 | S. BUNEL – B. HADJIBEYLI Évaluation du crédit d'impôt innovation | G2020/12 | L. GALIANA – B. SAKAROVITCH F. SÉMÉCURBE – Z. SMOREDA |
| G2019/13 | C. BONNET – F. GODET – A. SOLAZ Gendered economic determinants of couple formation over 50 in France | | Residential segregation, daytime segregation and spatial frictions : an analysis |
| G2019/14 | P. GIVORD – M. SUAREZ CASTILLO Excellence for all? Heterogeneity in high schools' value-added | G2020/13 | A. BAUER – J. BOUSSARD |
| G2019/15 | G. CETTE – L. KOEHL – T. PHILIPPON Labor Share in Some Advanced Countries | | Market Power and Labor Share |
| G2020/01 | J. SILHOL – B. VENTELOU Les zones d'intervention prioritaire reflètent-elles des écarts de pratiques des médecins généralistes ? | G2020/14 | A. BAUER – J. BOUSSARD – D. LASHKARI |
| G2020/02 | B. BOUCHTENIK – R. LARDEUX The Take-Up of Unemployment Benefit Extensions | | Information Technology and Returns to Scale |
| G2020/03 | J-M. GERMAIN A Welfare Based Estimate of "Real Feel GDP" for Europe and the USA | G2020/15 | V. LIN – O. MESLIN |
| G2020/04 | J. BOUSSARD – R. LEE Competition, Profit Share and Concentration | | Hausse des prix immobiliers et mesure du niveau de vie |
| G2020/05 | P. PORA Keep Working and Spend Less? Collective Childcare and Parental Earnings in France | G2021/01 | N. BECHICHI – G. THEBAULT |
| G2020/06 | R. MONIN – M. SUAREZ CASTILLO Product Switching, market power and distance to core competency | | Students' Preferences, Capacity Constraints and Post-Secondary Achievements in a Non-Selective System |
| G2020/07 | L. WILNER How do citizens perceive centralization reforms? Evidence from the merger of French regions | G2021/02 | B. BUREAU – A. DUQUERROY J. GIORGI – M. LÉ – S. SCOTT – F. VINAS |
| G2020/08 | L. WILNER The persistence of subjective well-being: permanent happiness, transitory misery? | | Une année de crise COVID : impact sur la dynamique des entreprises en France |
| G2020/09 | J-M. GERMAIN – T. LELLOUCH Comptabilité économique de la soutenabilité climatique | | Une évaluation sur données individuelles |
| G2020/10 | A. BAUER – M. ROTEMBERG Tax avoidance in French Firms: Evidence from the Introduction of a Tax Notch | G2021/03 | B. BUREAU – A. DUQUERROY J. GIORGI – M. LÉ – S. SCOTT – F. VINAS |
| | | | L'impact de la crise sanitaire sur la situation financière des entreprises en 2020 : une analyse sur données individuelles |
| | | G2021/04 | A. GODZINSKI – M. SUAREZ CASTILLO |
| | | | Disentangling the effects of air pollutants with many instruments |
| | | 2021/01 | S. QUANTIN – S. BUNEL – C. LENOIR |
| | | | Évaluation du dispositif Jeune entreprise innovante (JEI) Un exemple d'application du modèle d'analyse de sensibilité de Rosenbaum |
| | | 2021/02 | L. GOBILLON – D. MEURS – S. ROUX |
| | | | Differences in positions along a hierarchy : Counterfactuals based on an assignment model |
| | | 2021/03 | N. BECHICHI – J. GRENET – G. THEBAULT |
| | | | Ségrégation à l'entrée des études supérieures en France et en région parisienne : quels effets du passage à Parcoursup ? |

| | | | |
|---------|---|---------|--|
| 2021/04 | M. ANDRÉ – O. MESLIN Et pour quelques appartements de plus :Étude de la propriété immobilière des ménages et du profil redistributif de la taxe foncière | 2023/09 | J. SILHOL – L. WILNER Teachers' desired mobility to disadvantaged schools: Do financial incentives matter? |
| 2022/05 | S. GEORGES-KOT – D. GOUX – E. MAURIN The value of leisure synchronozation | 2023/12 | P. AGHION - C. ANTONIN - S. BUNEL - X. JARAVEL Modern Manufacturing Capital, Labor Demand, and Product Market Dynamics: Evidence from France |
| 2022/06 | N. BECHICHI – M. FABRE – T. OLIVIA Projections de la population active à l'horizon 2080 | 2023/13 | R. LAFROGNE-JOUSSIER – J. MARTIN – I. MEJEAN Cost Pass-Through and the Rise of Inflation |
| 2022/11 | S. QUANTIN – C. WELTER-MÉDÉE Estimation des montants manquants de versements de TVA :exploitation des données du contrôle fiscal | 2023/14 | A. BOURGEOIS – F. GERVOIS - R. LAFROGNE-JOUSSIER Forces et fragilités des tableaux internationaux entrées-sorties pour le calcul de l'empreinte carbone |
| 2022/14 | L. BLOCH – B. FAVETTO – A. LAGOUGE – F. SÉDILLOT Inégalités de rendements et de patrimoine en France en 2017 | 2023/17 | M. ADAM – O. BONNET – E. FIZE T.LOISEL – M. RAULT – L. WILNER How does fuel demand respond to price changes? |
| 2022/15 | H. GENIN – S. SCOTT Un portrait de la r'etention de main-d'oeuvre dans l'industrie française : analyse à partir des enquêtes mensuelles de conjoncture | 2023/18 | S. QUANTIN – C. WELTER-MÉDÉE Estimation de l'activité dissimulée pour le changement de base 2020 des comptes nationaux |
| 2023/02 | D. GOUX – E. MAURIN On the seventh day you shall do not any work : the winners and losers of Sunday work deregulation | 2023/19 | T. LOISEL – M. SICSIK La mobilité des individus le long de l'échelle des revenus en France sur la période 2003-2020 |
| 2023/03 | P. AGHION – A. BERGEAUD – M. LEQUIEN – M. MELITZ – T. ZUBER Opposing firm-level responses to the China shock: Output competition versus input supply | 2023/20 | D.BABET, O. GODECHOT, M. G. PALLANDINO Retour sur AKM : expliquer la dynamique des inégalités salariales en France |
| 2023/04 | L. GALIANA – L. WILNER Private Wealth over the Life-Cycle: A Meeting between Microsimulation and Structural Approaches | 2024/01 | M. ANDRE, A. BOURGEOIS , M. LEQUIEN , E. COMBET, A POTTIER Challenges in measuring the distriution of carbon footprints : the rôle of product and price heterogeneity |
| 2023/06 | M. HILLION – E. MAUGENDRE L'effet du « jour de carence » sur les absences pour maladie ordinaire, la santé perçue et le recours aux soins à court- terme | 2024/02 | C. LE THI, M.SUAREZ CASTILLO, V. COSTEMALLE Resodential mobility and air pollution inequelities: describing income disparities in lifelong air pollution exposure |
| 2023/07 | M.ANDRÉ- J-M GERMAIN – M. SICSIK 'Do I get my money back?': A Broader Approach to Inequality and Redistribution in France With a Monetary Valuation of Public Services | | |
| 2023/08 | R. LAFROGNE-JOUSSIER – J. MARTIN – I. MEJEAN Supply shocks in supply chains: Evidence from the early lockdown in China | | |