

Direction des Études et Synthèses Économiques

G 2015 / 01

**The walking dead Euler equation
Addressing a challenge to monetary policy models**

Aurélien POISSONNIER

Document de travail



Institut National de la Statistique et des Études Économiques

INSTITUT NATIONAL DE LA STATISTIQUE ET DES ÉTUDES ÉCONOMIQUES

*Série des documents de travail
de la Direction des Études et Synthèses Économiques*

G 2015 / 01

The walking dead Euler equation Addressing a challenge to monetary policy models

Aurélien POISSONNIER*

JANVIER 2015

Ce document de travail s'inscrit dans un projet plus large d'étude de l'équation d'Euler sur la consommation. L'auteur remercie Behzad Diba pour ses commentaires et axes de recherche sur une version préliminaire ; Édouard Challe pour sa direction au-delà des frontières de ce travail ; Xavier Ragot pour sa discussion particulièrement enrichissante et les participants au séminaire du département des études économiques de l'Insee (Paris, 2013) ainsi que du séminaire du laboratoire de macroéconomie du Crest (Paris, 2013) pour leurs nombreuses questions et suggestions.

* Département des Études Économiques - Division « Études Macroéconomiques » Timbre G220 - 15, bd Gabriel Péri - BP 100 - 92244 MALAKOFF CEDEX
Crest-LMA & École Polytechnique

The walking dead Euler equation

Addressing a challenge to monetary policy models

Abstract

Despite some strong cases built against it, the Euler equation on consumption remains a cornerstone of monetary policy models.

In this paper I test the representative household's consumption-savings trade-off in two original directions. I first use households' specific interest rates for both US and France. These rates have a better explanatory power of the representative consumer's behaviour than the monetary policy rate. I also use a less restrictive approach to measure households' expectations based on survey data.

However, the challenge posed by the Euler equation to monetary policy models remains.

Keywords: Euler equation, consumption

L'équation d'Euler est morte, vive l'équation d'Euler !

Résumé

Malgré des éléments à charge conséquents, l'équation d'Euler sur la consommation reste une des briques élémentaires des modèles de politique monétaire.

Dans cet article je teste l'arbitrage consommation-épargne du ménage représentatif dans deux directions nouvelles. J'utilise des taux d'intérêt spécifiques aux ménages pour les États-Unis et la France. Ces taux améliorent la description du comportement de l'agent représentatif comparativement au taux de la politique monétaire. Je mesure également différemment les anticipations des ménages à partir d'enquêtes de conjoncture.

Malgré cela, le challenge posé par l'équation d'Euler aux modèles de politique monétaire reste entier.

Mots-clés : équation d'Euler, consommation

Classification JEL : E21, D91

Introduction

The Euler equation on consumption is a cornerstone of monetary policy models. In the permanent income hypothesis, when households are assumed to be rational, their consumption scheme should verify the following equation:

$$1 = \beta E_t \left(\frac{U_c(t+1)}{U_c(t)} \frac{1+i_t}{\Pi_{t+1}} \right) \quad (1)$$

where $U_c(t)$ is the marginal utility of consumption at time t , i is the nominal interest rate at which households can lend and borrow and Π the inflation rate of consumption prices. E_t is the expectation operator describing how households form their expectations over future variables at time t .

Since [Hall \(1978\)](#), macroeconomic data have been confronted to economic theory repeatedly leading to successive refutations, validations and improvements in households' consumption models. Early papers, surveyed by [Attanasio \(1999\)](#), have investigated the properties of consumption within this framework under the assumption of constant real interest rate and often certainty equivalence. Many alternative utility functions have been used to reconcile consumption data with the permanent-income hypothesis and understand some major stylized facts. [Mankiw \(1982\)](#), and [Bernanke \(1985\)](#) study the specificities of durables consumption. [Abel \(1990\)](#) and [Gali \(1994\)](#) investigate the equity premium puzzle by modifying the utility function. [Campbell and Mankiw \(1990\)](#) consider a population with only a fraction of households following the model, while others, financially constrained, consume their current income in each period. [Flavin \(1981\)](#) investigates the *excess sensitivity puzzle*, that is consumption reacting to lagged changes in income. [Campbell and Deaton \(1989\)](#) investigate the *excess smoothness puzzle*, that is consumption not responding one-to-one to shocks to permanent income.

Relaxing the constant interest rate hypothesis [Canzoneri et al. \(2007\)](#) test the first order condition of households maximization program (1) under different utility specifications against the data. Their main result is that when the Euler equation is assumed to hold and the interest rate is treated as the unknown variable, the counter-factual interest rate to which the representative household seems to respond is quite different from the monetary policy rate. In most cases it is negatively correlated to it, a result they pose as a *challenge for monetary policy models*, which are built on this Euler equation to link the real and nominal side of the economy.

To derive these results, they assume that households' expectations can be described through a VARX model, i.e. households use optimally all the information publicly available. This hypothesis combined either with a log-normality hypothesis or a first order approximation allows them to estimate the marginal rate of substitution between present and future consumption which, if the Euler equation was verified by the data, should be equal to the interest rate faced by households. They compare this marginal rate of substitution with the actual monetary policy interest rate and doing so invalidate the permanent income hypothesis even when many alternative utility functions are considered.

[Carroll \(2000\)](#) would interpret this result as an incompatibility between macro data and a microfounded model, due to the differences in the marginal behaviour of individuals. The Euler

equation on consumption could be wrong, not because of the form of the utility function but because the representative agent assumption is heroic. However, microeconomics comes against its own difficulties (Carroll, 2001; Ludvigson and Paxson, 2001) while macroeconomic models remain widespread and have crucial implications for the policy maker, both monetary and fiscal. Thus, the *challenge* posed by the aggregate Euler equation on consumption is worth investigating.

I built on Canzoneri et al.'s analysis and test household specific rates in an estimated Euler equation for both the US and France when expectations are measured *ex ante* by a VARX model. I find that households' behaviour is better described by interest rates other than the monetary policy one; indicating that households encounter sizeable frictions on the loans and savings market.

Specifically, I find that the Euler equation is compatible with households reacting to the rate on car loans in the US; but for France households do not seem to react to any specific rates. These results have strong implications for the conduct of monetary policy: the transmission channel is much weaker than generally assumed; and for economic modelling: the spread between household market conditions and the monetary policy instrument can not be relegated to the residual.

Even for the US, there remain sizeable discrepancies between the Euler equation and the data. In particular households seem to react to an interest rate much more volatile than actual rates, a property I will investigate further in the remainder of this project.

1 Testing the Euler equation against household specific interest rates

Using macroeconomic data to capture the value of structural parameters is not the purpose of this paper: [Attanasio and Weber \(1993\)](#) show that estimates of the intertemporal elasticity of substitution on aggregate data are systematically lower than estimates on average cohort data. [Attanasio and Weber \(1993, 1995\)](#) show that tests on aggregate data tend to reject micro-founded models specification too often. [Carroll \(2000\)](#) actually wrote a *requiem for the representative consumer model* on the idea that individual wealth heterogeneity imply marginal utility heterogeneity and potentially impossible aggregation of the Euler equation. However as this model still prevails in macroeconomics, **I inquire into how much of the Euler equation can be saved by a richer dataset.**

[Canzoneri et al. \(2007\)](#) test and reject the Euler equation on consumption on US data.¹ They describe the failure of Euler equation as follows: "*the consumption Euler equation implies that the real interest rate is proportional to the expected growth of real consumption. The empirical literature shows that a monetary tightening has a small effect on consumption in the first quarter following the tightening. In the following few quarters, the consumption falls more rapidly so that expected consumption growth declines. A decline in expected consumption growth will reduce the real interest rate implied by the Euler equation. The empirical literature shows that money market rates respond in the opposite direction.*"

However, if households were reacting to another interest rate than that of the money market (mortgage, deposit, private loans...), the difference between this rate and monetary policy could account for the negative or weak correlation they observe. Such a result would have strong implications for monetary policy analysis and the way it is modelled (in the New Neoclassical Synthesis for instance). It would rehabilitate the Euler equation but dampen the transmission mechanism between the policy maker and households.

In this paper, I investigate this possibility. I estimate the relation between different household specific interest rates, expected consumption growth and expected inflation and assess the significance of interest rates in this equation and the fit to the data. The interest rates I consider are depicted on [Figure 1](#). The correlation of real monetary policy rate and the spreads on household specific rates are reported in [Table 1](#). It is noteworthy that household specific spreads are negatively correlated to real monetary policy rate, which could *a priori* account for the results exposed by [Canzoneri et al. \(2007\)](#).

US rates ([Figure 1a](#)) I use the Effective Federal Funds Rate (Fedfunds), a mortgage rate (*30-Year conventional mortgage rate*), a car loans rate (*Finance Rate on Consumer Instalment Loans at Commercial Banks, New Autos 48 Month Loan*), a personal loans rate (*Finance Rate*

¹In [appendix C](#) I replicate their results. I show that they also hold on French data. While they tested the robustness to the definition of the utility function considered, I show that the result is also robust to the choice of several consumption bundles.

real FedFunds	1	-	-	-	-	-
spread Mortgage	-0.3	1	-	-	-	-
spread Car Loans	-0.43	0.91	1	-	-	-
spread Pers. Loans	-0.46	0.84	0.88	1	-	-
spread Cert. Deposit	-0.2	0.38	0.35	0.38	1	-
spread Treasury Bill	-0.46	0.73	0.76	0.84	0.52	1

(a) US

real Pibor	1	-	-	-
spread Deposit Ly	-0.5	1	-	-
spread Livret	-0.83	0.57	1	-
spread Mortgage	-0.11	0.51	0.33	1

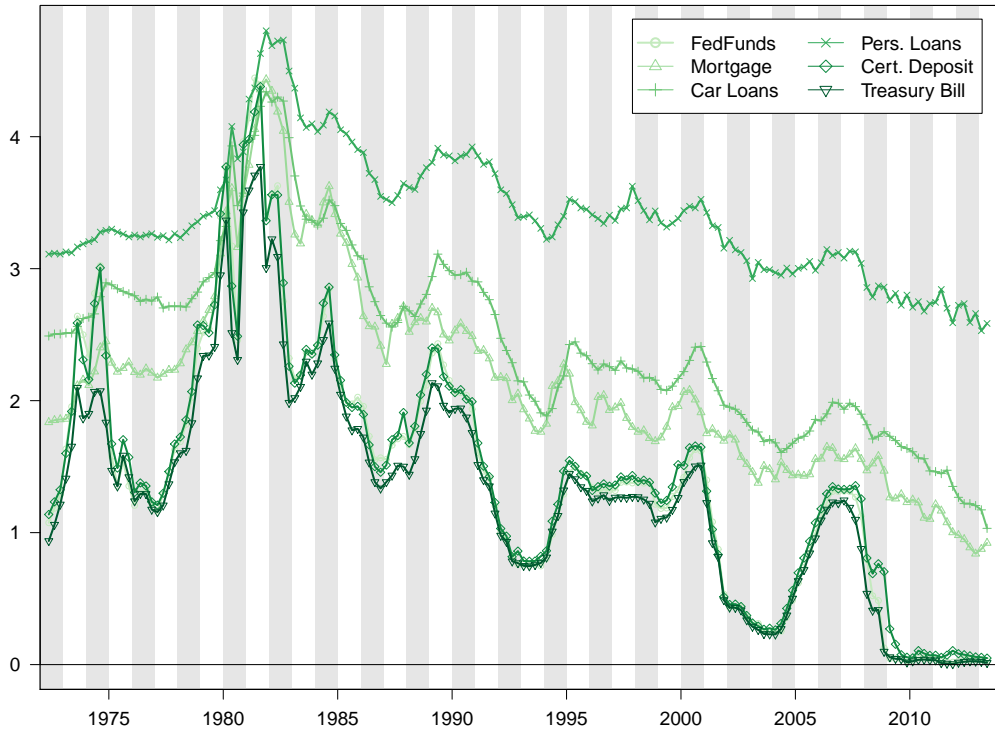
(b) France

Table 1: Correlation of the interest rates (in real terms)

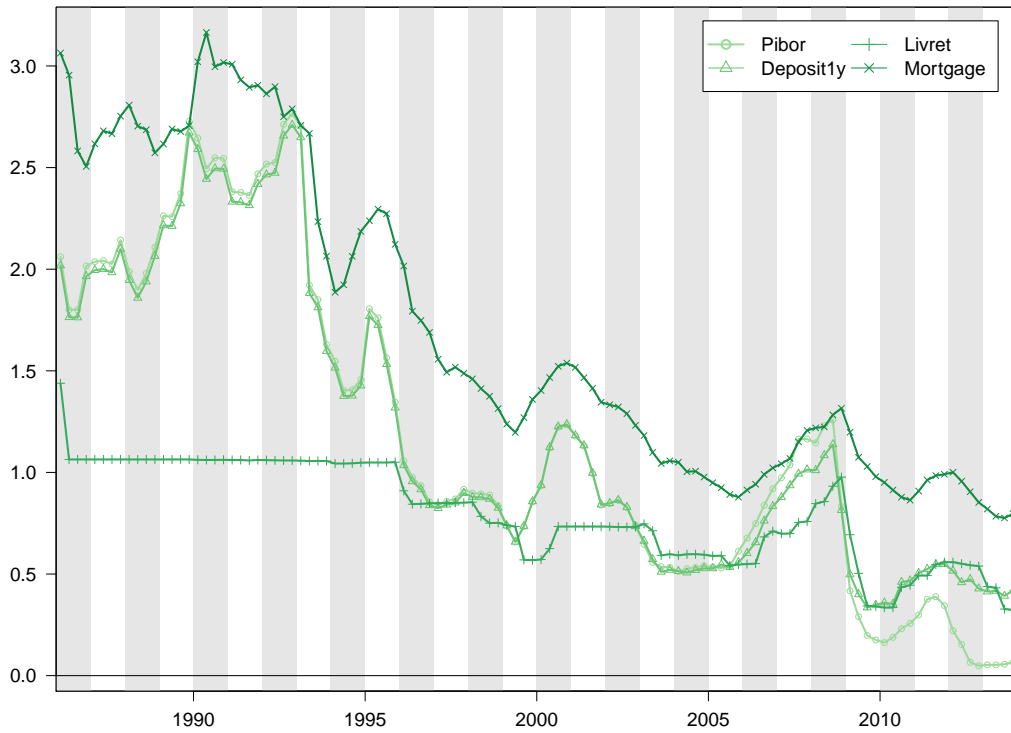
on *Personal Loans at Commercial Banks, 24 Month Loan*), a deposit rate (*3-Month Certificate of Deposit: Secondary Market Rate*) and the 3-month treasury bill (*3-Month Treasury Bill: Secondary Market Rate*). Apart from the mortgage rate, maturities of these interest rates are short. The mortgage rate is included because wealth effects are empirically stronger in the US than in France, a stylized fact sometimes attributed to the higher flexibility of mortgages in the US where real estate can be used as a collateral for consumption (Aviat et al., 2007). Some of these rates are closely related (treasury bill, fedfunds and certificates of deposits). I keep them all to remain as exhaustive as possible.²

French rates (Figure 1b) I use the 3-month interbank rate (Pibor-Euribor) and three different rates, all for new contracts for households and individual enterprises: *Deposits with agreed maturity* up to one year, *Deposits redeemable at notice* and *Loans for house purchases excl. bank overdrafts*, total maturity. *Deposits redeemable at notice* refer to regulated savings accounts. The oldest one (*livret A*) dates back to the nineteenth century and is the most widespread financial product in France: more than 90% of French residents have such an account, standing with other *livrets* (*livret jeune*, *livret developement durable*, *livret d'épargne populaire*) for more than 15% of French households' financial assets (Noyer and Mérieux, 2012). As shown on Figure 1b the return on these savings is not linked to the monetary policy rate on most of the sample. More recently, this rate has been indexed on a combination of inflation, Eonia and Euribor with a discretionary component set by the government.²

² Data are further detailed in appendix A.1.



(a) United States



(b) France

Figure 1: Actual interest rates in nominal terms

The Euler equation under a linear form I assume that households are forming their expectations through a VARX model estimated ex-ante.

$$c_{t+1} = \sum_{j=0}^k \lambda_j^{c,c} c_{t-j} + \sum_{j=0}^k \lambda_j^{c,\pi} P_{t-j} + \gamma^c X_t + \epsilon_{t+1}^c \quad (2)$$

$$P_{t+1} = \sum_{j=0}^k \lambda_j^{\pi,c} c_{t-j} + \sum_{j=0}^k \lambda_j^{\pi,\pi} P_{t-j} + \gamma^\pi X_t + \epsilon_{t+1}^\pi \quad (3)$$

$$(4)$$

with c consumption per capita (in log) and P its deflator (in log) regressed on 12 lags of both variables and on exogenous regressors (X). For these regressors I consider alternatively economic variables, following [Canzoneri et al. \(2007\)](#) and [Fuhrer \(2000\)](#), and balances of opinion from household surveys. In this latter case, I use the surveys of consumers by the university of Michigan and the European harmonized household survey published for France by Insee (see also [Appendix A.2](#)). This second method is less biased by the economist's *a priori*, however I find very similar results with these data. ϵ^c , ϵ^π are the errors of this VARX model and are by assumption identified to forecasting errors.

If the Euler equation holds, the following should hold under log-normality hypothesis of the VARX residuals (see [Appendix B](#)):

$$i_t = \sigma E_t \Delta c_{t+1} + E_t \pi_{t+1} - \ln(\beta) - \left(\frac{\sigma^2}{2} \text{var}(\epsilon^c) + \sigma \text{cov}(\epsilon^c, \epsilon^\pi) + \frac{1}{2} \text{var}(\epsilon^\pi) \right) \quad (5)$$

with i_t the interest rate to which households are subject and $E_t \Delta c_{t+1}$, $E_t \pi_{t+1}$ the expectations formed through the previous VARX model for consumption growth ($\Delta \log$) and inflation.³

Model estimation Using several interest rates in an agnostic way, the model can be tested under the following form:

$$E_t \Delta c_{t+1} = \delta + \sum \gamma^x (i_t^x - E_t \pi_{t+1}) + \varepsilon_t \quad (6)$$

with a constant (δ), coefficients (γ^x) and errors (ε) to be estimated.

For sake of comparability, I estimated the model only with the monetary policy rate and I accept the hypothesis that this rate alone does not bring useful information in explaining expected consumption growth. This result summarizes those of [appendix C](#) as raising a challenge for monetary policy models using the Euler equation: this equation, as it is used in monetary policy models, is at odds with the data. The estimates for equation (6) with household specific rates are reported in [Table 2](#).

³Inflation is defined in accordance with consumption as the growth rate ($\Delta \log$) of the considered consumption bundle deflator.

	Economic Regressors		Surveys	
	coeff.	Std.	coeff.	Std.
cste	0.0073	4.8645	0.0078	3.6757
r.Fed Funds	-0.3038	-1.2174	-0.4877	-1.3654
r.Mortgage	-0.0105	-0.084	-0.0083	-0.0476
r.Car Loans	0.6231	4.7107	0.5532	2.9457
r.Pers. Loans	-0.4071	-5.1623	-0.3887	-3.4573
r.Cert. Deposit	-0.9478	-3.4824	-0.9392	-2.4075
r.Treasury Bill	1.1787	5.0743	1.4423	4.3088
DW/adjustedR2	0.9283	0.3568	1.1059	0.228
	stat.	p-value	stat.	p-value
Fisher's Test 1	16.07	0	9.02	0
Fisher's Test 2	13.9	0	14.03	0
Fisher's Test 3	19.18	0	10.5	0
Fisher's Test 4	0.23	0.98	0.13	1

(a) US

	Economic Regressors		Surveys	
	coeff.	Std.	coeff.	Std.
cste	9e-04	1.1216	9e-04	0.8961
r.Pibor	0.5817	2.0315	0.756	2.2445
r.Depositly	-0.9067	-2.5547	-1.1223	-2.7031
r.Livret	-0.2059	-1.8859	-0.1854	-1.5661
r.Mortgage	0.3896	2.6083	0.414	2.3809
DW/adjustedR2	1.4493	0.0814	1.9567	0.0756
	stat.	p-value	stat.	p-value
Fisher's Test 1	2.25	0.04	2.13	0.06
Fisher's Test 2	2.71	0.1	2.43	0.12
Fisher's Test 3	2.38	0.04	2.38	0.04
Fisher's Test 4	0.05	1	0	1

(b) France

Table 2: Euler equation models (6) (CES utility function with expectations measured by a VARX with economic regressors or survey data)

For the US (Table 2a), coefficients are significantly different from 0, excepted for the fedfunds and the rate on mortgages. The signs of the estimated coefficients are nevertheless economically puzzling: for instance, the interest rate on car loans and personal loans have opposite effects on consumption. Overall this estimation yields a negative rate combination in nominal terms which is at odds with the theory.

For France (Table 2b), the coefficient on the regulated savings rate is not statistically significant.⁴ Similarly to the US, the signs of the coefficients vary, which is not economically interpretable and the optimal rate combination is largely negative.

Are these *Euler equations on consumption*? On this model I perform three Fisher's tests examining whether the estimated equation can be called *Euler equation on consumption* in which household specific rates play a role:

\mathcal{T}_1 on the joint nullity of all coefficients as a simple check

\mathcal{T}_2 on the cumulated nullity of interest rate coefficients to verify that this model effectively relates expected consumption with interest rates so that it can be called a *Euler equation on consumption*

\mathcal{T}_3 on the joint nullity of interest rate coefficients (other than monetary policy) to verify that rates other than the monetary policy one bring useful information to the model

\mathcal{T}_4 on the equality between coefficients estimated using the expectation VAR and assuming perfect expectations

These tests are reported in Table 2. For the US countries all null hypothesis but the last are rejected. For France, only at the 10% threshold can I reject the hypothesis that $\sum_x \gamma^x = 0$.

⁴The constant is not significantly different from 0 either: in equation (6) $\ln(\beta)$ and the variance term are of opposite sign and can add up to zero.

The first three tests imply that the estimated equation is a *Euler equation on consumption* in which household specific rates play a role.

As for the last test, it is conducted to verify how the VARX estimated *ex ante* influences the estimation in this second step. The test concludes that the two estimations are not statistically different.

Interest rates comparisons From equation (6), the previous Fisher's tests allow me to compute

$$\frac{E_t \Delta c_{t+1} - \delta}{\sum_x \gamma^x} + E_t \pi_{t+1} \quad \text{and} \quad \frac{\sum_x \gamma^x i_t^x}{\sum_x \gamma^x} \quad (7)$$

The left hand side of the previous equation is the marginal rate of substitution between present and future consumption (hereafter *MRS* denoted \tilde{i}_t).

$$\tilde{i}_t = \frac{E_t \Delta c_{t+1} - \delta}{\sum_x \gamma^x} + E_t \pi_{t+1} \quad (8)$$

If the model held exactly, this rate would be equal to the optimal combination of actual rates returned by the estimation \bar{i}_t

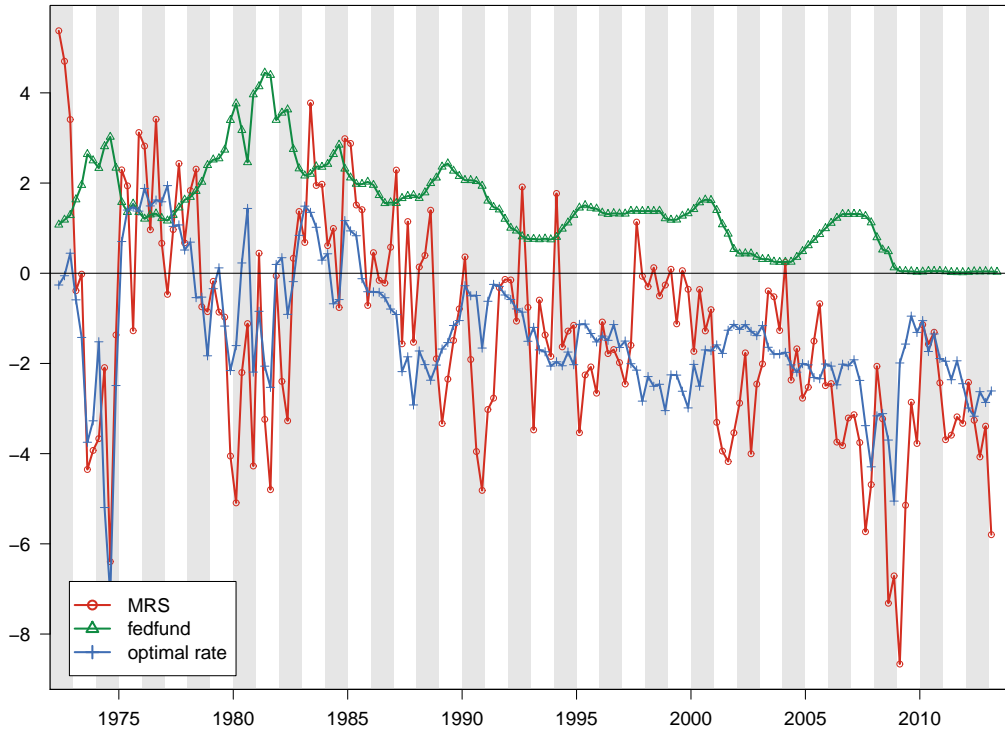
$$\bar{i}_t = \frac{\sum_x \gamma^x i_t^x}{\sum_x \gamma^x} \quad (9)$$

Table 3 displays some comparative statistics for actual and Euler interest rates in real terms.

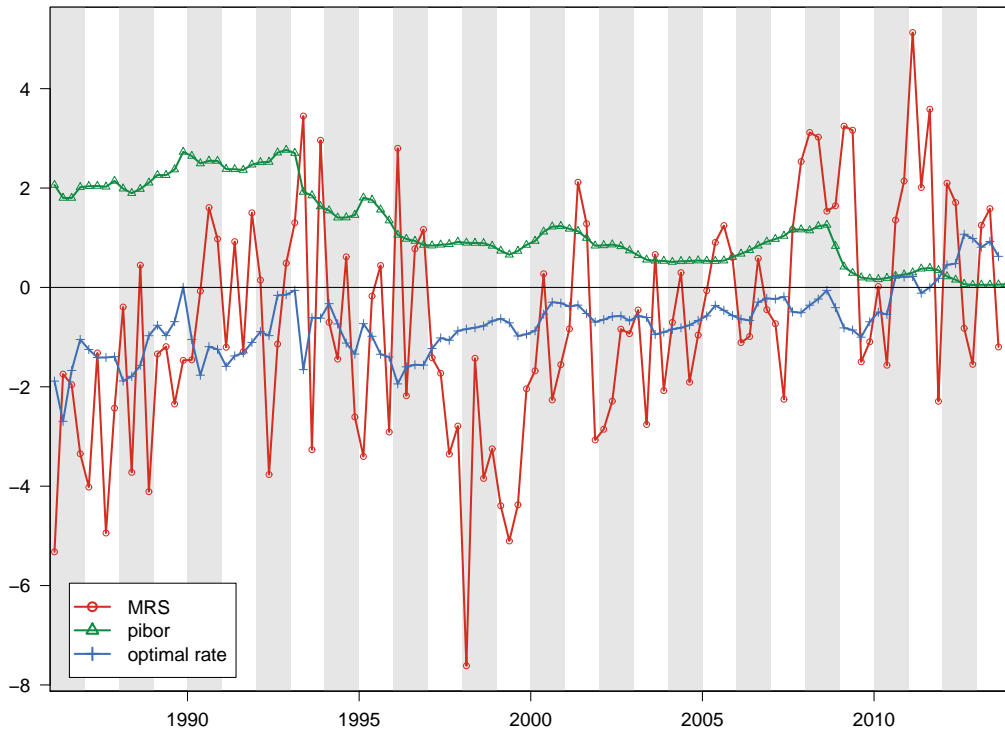
In the US, the *MRS* is not correlated with the Fedfunds (< 10%). The correlation with the optimal rate combination is much larger (62%). For France, correlation with the Pibor-Euribor can even be negative. With the optimal spread combination it reaches 34% when deflation is based on expected future inflation (correlations 2).

However for both countries, the statistical properties of both the optimal rate combination and the *MRS* are not consistent with the initial interest rates. In particular, they are negative and the *MRS* is much more volatile than the corresponding optimal rate combinations (Table 3). Comparisons of these rates depicted in Figure 2 convey the same message.

I find similar results when expectations are built on survey data. Also allowing for autocorrelation of the residual and habit formation in the utility function does not markedly modify the outcome of the estimations.



(a) US



(b) France

Figure 2: Actual interest rates and MRS with a CES utility function (in nominal terms)

	Fedfunds \tilde{i}^{x_0}	Opt. Comb. \tilde{i}	MRS \tilde{i}
Mean	0.46	-2.32	-2.31
Std deviation	0.72	1.48	2.35
Minimum	-0.93	-9.63	-9.15
Maximum	2.76	0.83	4.5
Correlation1	1	0.13	0.08
Correlation1	0.13	1	0.62
Correlation2	1	0.08	0.05
Correlation2	0.08	1	0.62

(a) US

	Pibor \tilde{i}^{x_0}	Opt. Comb. \tilde{i}	MRS \tilde{i}
Mean	0.71	-1.2	-1.2
Std deviation	0.73	0.79	2.32
Minimum	-0.5	-3.19	-7.81
Maximum	2.52	0.96	4.36
Correlation1	1	-0.33	-0.18
Correlation1	-0.33	1	0.28
Correlation2	1	-0.35	-0.12
Correlation2	-0.35	1	0.34

(b) France

I test two transformations of actual nominal rates in real terms: correlation 1 corresponds to the rate deflated by contemporaneous inflation $i_t - \pi_t$ and correlation 2 uses expected future inflation $i_t - E_t \pi_{t+1}$.

Table 3: Comparative statistics of the interest rates and the MRS (in real terms)

Positivity constraint Under a simplifying aggregation assumption, one could expect the weight of each rate in the optimal combination to be the share of the population arbitrating on it, so that $\forall x$ the sign of γ^x is the same as the sign of the intertemporal elasticity of substitution. The high correlations from the previous unconstrained estimations and the lack of economic interpretation of the optimal combinations found may thus be a statistical artefact. In line with this intuition I estimate the same model by maximum likelihood while restricting the sign of γ^x . These constrained estimations allow me to select a subsample of interest rates for which the restriction is verified. Results are reported in Table 4.

For the US the selected model includes only the rate on car loans. Its coefficient in the regression is significantly different from 0 so I can compute the MRS in this case. The correlation of the MRS with the optimal rate combination (equal to the car loans rate) is however weakened compared to the unconstrained estimation (see Table 5). Comparisons of these rates are depicted in Figure 3. The MRS is in particular very volatile.

For France, the selected model includes only the rate on mortgages but its coefficient in the regression is not significantly different from 0. Only for sake of comparison with the US are the results presented in the case of France in Table 5 and Figure 3.

	Economic Regressors		Surveys	
	coeff.	Std.	coeff.	Std.
cste	0.0019	3.2915	0.0017	2.3078
r.FedFunds	0	0	0	0
r.Mortgage	0	0	0	0
r.Car Loans	0.1588	4.3575	0.1734	3.8721
r.Pers. Loans	0	0	0	0
r.Cert. Deposit	0	0	0	0
r.Treasury Bill	0	0	0	0
DW/adjustedR2	0.7677	0.0994	0.943	0.079

(a) US

	Economic Regressors		Surveys	
	coeff.	Std.	coeff.	Std.
cste	0.0019	3.0473	0.002	2.8127
r.Pibor	0	0	0	0
r.DepositLy	0	0	0	0
r.Livret	0	0	0	0
r.Mortgage	0.0626	1.4635	0.0519	1.0583
DW/adjustedR2	1.2403	0.0103	1.725	0.0011

(b) France

Reported values for the interest rate coefficients are the γ^x , not the λ^x . The variance matrix for the estimates is computed with the delta method and from the gradient of the likelihood at each date.

Table 4: Euler equation models (6) under positivity constraint (CES utility function with expectations measured by a VARX with economic regressors or survey data)

	Fedfunds \bar{i}^{*0}	Opt. Comb. \bar{i}	MRS \bar{i}
Mean	0.46	1.45	1.46
Std deviation	0.72	0.69	1.97
Minimum	-0.93	-0.6	-4.25
Maximum	2.76	3.32	7.15
Correlation1	1	0.81	0.08
Correlation1	0.81	1	0.34
Correlation2	1	0.79	0.05
Correlation2	0.79	1	0.32

(a) US

	Pibor \bar{i}^{*0}	Opt. Comb. \bar{i}	MRS \bar{i}
Mean	0.71	1.22	1.23
Std deviation	0.73	0.75	5.23
Minimum	-0.5	-0.19	-11.3
Maximum	2.52	2.9	16.16
Correlation1	1	0.95	0.18
Correlation1	0.95	1	0.19
Correlation2	1	0.94	0.12
Correlation2	0.94	1	0.14

(b) France

I test two transformations of actual nominal rates in real terms: correlation 1 corresponds to the rate deflated by contemporaneous inflation $i_t - \pi_t$ and correlation 2 uses expected future inflation $i_t - E_t \pi_{t+1}$.

Table 5: Comparative statistics of the interest rates and the *MRS* under positivity constraint (in real terms)

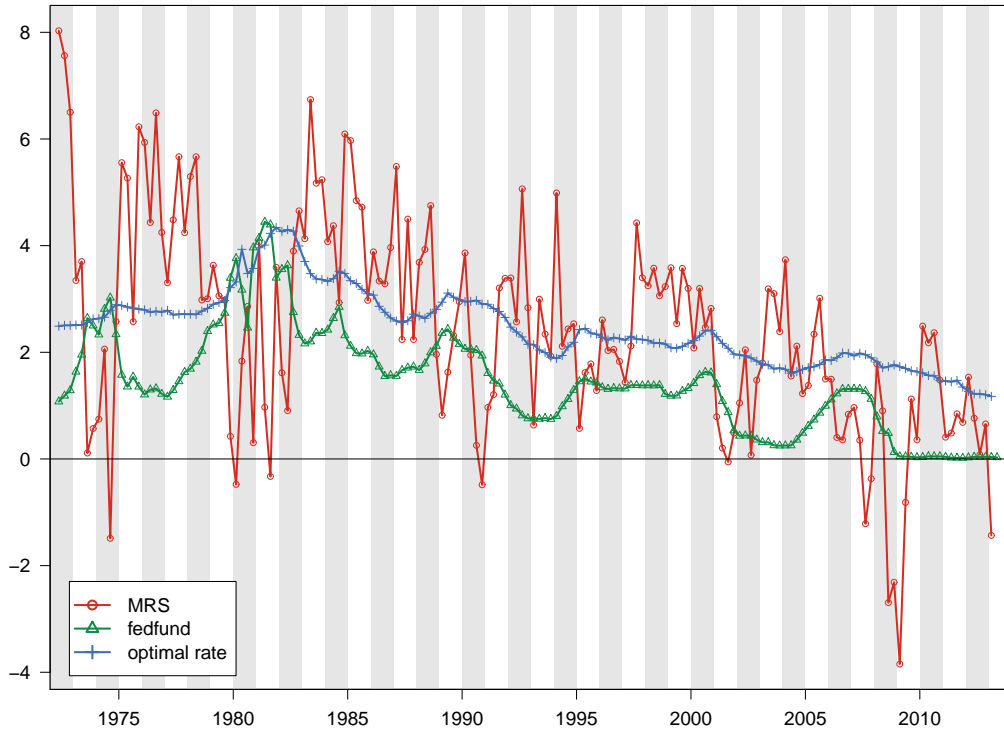
Conclusion

The monetary policy rate does not bring useful information to explain the intertemporal elasticity of substitution of consumption of the representative consumer both in the US and France. This paper points to a representative household reacting to the interest rate on car loans in the US. For France this rate is not identified.

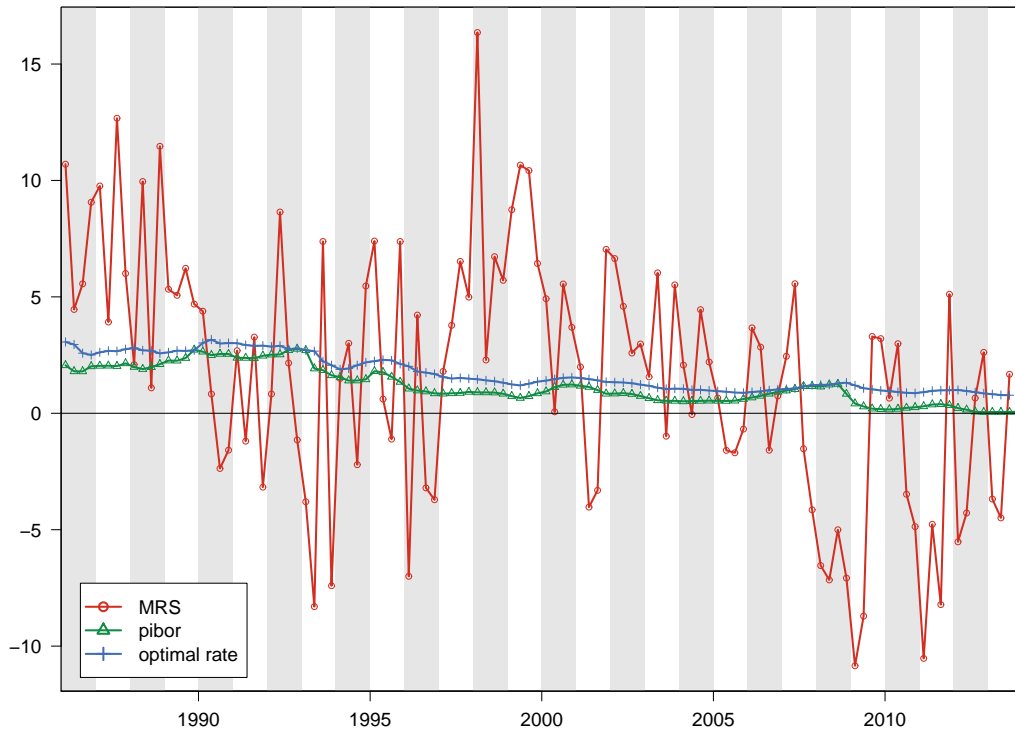
This result may seem trivial as it is clear that households can not borrow directly from the Central Banker's desk. What is less trivial however, is that the spread between households' rate and the monetary policy instrument matters so much and shall not be relegated to the residual of the Euler equation. Models should account for financial market frictions faced by households and consider weaker transmission mechanism of the monetary policy to a major share of real final demand, households' consumption.

Household specific rates explain part of the wedge between the *MRS* and the monetary policy rate in the US; however there remain sizeable discrepancies which do not rehabilitate the Euler equation as a powerful modelling element. In other words, the challenge to monetary policy models raised by [Canzoneri et al. \(2007\)](#) remains unchanged.

This dead-end may be due to omitted variables (current income, demographic effects, unemployment...) in the Euler equation under its simplest form. Indeed, econometric investigations of the consumption-savings behaviour often put forward richer specifications ([Aviat et al., 2007](#); [Bardaji et al., 2014](#)). In the present paper I find that the *MRS* is extremely volatile. Similar estimations as those presented in this paper with habit formation suggest that allowing the utility of consumption to be smoother does not reduce the volatility of the *MRS*. In further developments of this project, I will investigate the extend to which the measurement of expectations used can influence this result.



(a) US



(b) France

Figure 3: Actual interest rates and MRS with a CES utility function under positivity constraint (in nominal terms)

References

- AB Abel. Asset prices under habit formation and catching up with the Joneses. *The American Economic Review*, 80(2), 1990. URL <http://www.jstor.org/stable/10.2307/2006539>.
- Orazio P. Attanasio. *Handbook of Macroeconomics Volume 1 Chap 11 Consumption*, volume 1 of *Handbook of Macroeconomics*. Elsevier, 1999. ISBN 9780444501578. doi: 10.1016/S1574-0048(99)10019-3. URL [http://dx.doi.org/10.1016/S1574-0048\(99\)10019-3](http://dx.doi.org/10.1016/S1574-0048(99)10019-3).
- Orazio P Attanasio and Guglielmo Weber. Consumption Growth, the Interest Rate and Aggregation. *Review of Economic Studies*, 60(3):631–49, 1993. URL <http://ideas.repec.org/a/bla/restud/v60y1993i3p631-49.html>.
- Orazio P Attanasio and Guglielmo Weber. Is Consumption Growth Consistent with Intertemporal Optimization? Evidence from the Consumer Expenditure Survey. *Journal of Political Economy*, 103(6):1121 – 57, 1995. URL <http://ideas.repec.org/a/ucp/jpolec/v103y1995i6p1121-57.html>.
- Antonin Aviat, JC Bricongne, and PA Pionnier. Richesse patrimoniale et consommation: un lien ténu en France, fort aux États-Unis. *Note de conjoncture INSEE*, pages 37–52, 2007. URL http://81.255.68.41/fr/indicateurs/analys_conj/archives/decembre2007_d2.pdf.
- José Bardaji, Matthieu Lequien, and Aurélien Poissonnier. La consommation des ménages français depuis 2009 : rôle du système fiscal-social. *L'économie française Comptes et dossiers Insee Références*, 2014.
- Ben Bernanke. Adjustment costs, durables, and aggregate consumption. *Journal of Monetary Economics*, 15(1):41–68, January 1985. ISSN 03043932. doi: 10.1016/0304-3932(85)90052-2. URL [http://dx.doi.org/10.1016/0304-3932\(85\)90052-2](http://dx.doi.org/10.1016/0304-3932(85)90052-2).
- Nicholas Bloom. The impact of uncertainty shocks. *Econometrica*, 77(3):623–685, 2009. ISSN 1468-0262. doi: 10.3982/ECTA6248. URL <http://dx.doi.org/10.3982/ECTA6248>.
- JY Campbell and NG Mankiw. Permanent income, current income, and consumption. *Journal of Business & Economic ...*, 1990. URL <http://ideas.repec.org/p/nbr/nberwo/2436.html><http://www.tandfonline.com/doi/abs/10.1080/07350015.1990.10509798>.
- JYD Campbell and Angus Deaton. Why Is Consumption So Smooth ? *Review of Economic Studies*, 56(3):357–373, 1989. URL <http://scholar.google.com/scholar?hl=en&btnG=Search&q=intitle:Why+is+Consumption+So+smooth+?#0><http://scholar.google.com/scholar?hl=en&btnG=Search&q=intitle:Why+Is+Consumption+So+Smooth#0>.
- Matthew B. Canzoneri, Robert E. Cumby, and Behzad T. Diba. Euler equations and money market interest rates: A challenge for monetary policy models. *Journal of Monetary Economics*, 54(7):1863–1881, October 2007. ISSN 03043932. doi: 10.1016/j.jmoneco.2006.09.001. URL <http://linkinghub.elsevier.com/retrieve/pii/S0304393206002297>.
- Christopher D. Carroll. Requiem for the Representative Consumer? Aggregate Implications of Microeconomic Consumption Behavior. *American Economic Review*, 90(2):110 – 115, 2000. URL <http://ideas.repec.org/a/aea/aecrev/v90y2000i2p110-115.html>.

- Christopher Dixon Carroll. Death to the Log-Linearized Consumption Euler Equation! (And Very Poor Health to the Second-Order Approximation). *The B.E. Journal of Macroeconomics*, (1), 2001. URL <http://ideas.repec.org/a/bpj/bejmac/vadvances.1y2001i1n6.html>.
- MA Flavin. The adjustment of consumption to changing expectations about future income. *The Journal of Political Economy*, 89(5):974–1009, 1981. URL <http://www.jstor.org/stable/10.2307/1830816>.
- JC Fuhrer. Habit formation in consumption and its implications for monetary-policy models. *American Economic Review*, (1996), 2000. URL <http://www.jstor.org/stable/10.2307/117334>.
- Jordi Gali. Keeping Up with the Joneses: Consumption Externalities, Portfolio Choice, and Asset Prices. *Journal of Money, Credit and Banking*, 26(1):1 – 8, 1994. URL <http://ideas.repec.org/a/mcb/jmoncb/v26y1994i1p1-8.html>.
- R Hall. Stochastic implications of the life cycle-permanent income hypothesis: theory and evidence. *The Journal of Political Economy*, 86(6):971–987, 1978. URL http://papers.ssrn.com/sol3/papers.cfm?abstract_id=225080.
- Sydney Ludvigson and Christina H. Paxson. Approximation Bias In Linearized Euler Equations. *The Review of Economics and Statistics*, 83(2):242 – 256, 2001. URL <http://ideas.repec.org/a/tpr/restat/v83y2001i2p242-256.html>.
- N. Gregory Mankiw. Hall’s consumption hypothesis and durable goods. *Journal of Monetary Economics*, 10:417–425, 1982.
- Christian Noyer and Antoine Mérieux. Rapport annuel de l’observatoire de l’épargne réglementée. Technical report, 2012.
- Alain Quinet and Nicolas Ferrari. Rapport de la commission mesure du pouvoir d’achat des ménages. Technical report, 2008. URL http://www.insee.fr/fr/publications-et-services/dossiers_web/pouvoir_achat/rap_mesure_pouvoir_achat.pdf.

A Data and the VAR of expectations

A.1 Data

France I use Insee’s Quarterly National Accounts data for consumption per capita excluding durables, its deflator, GDP, disposable income.⁵ Data, including interest rates, are available since the early eighties but I restrict the sample to post 1986 for stationariness reasons as this sample includes only the end of the period of high and volatile inflation. Interest rate (Pibor-Euribor and household specific rates) are taken from Banque de France and the ECB. For household balances of opinion, I use the European harmonized Household Survey published for France by Insee. Population and unemployment data are also retrieved from Insee’s public database. I use

⁵Data are taken from the first publication of base 2010 (2014Q1) but I also estimated with similar results the model on the last publication of base 2005.

quarterly data spanning from 1986Q1 to 2013Q4.

US I use data from the National Income and Product Account (NIPA) for consumption, GDP, disposable income and deflators. I restrict consumption to non-durable goods and services. Real variables are taken per-capita. Interest rates, population and unemployment data are taken from the Fred database. I also use the surveys of consumers by the university of Michigan. I use quarterly data spanning from 1972Q1 to 2013Q2.

A.2 The VAR of expectations

For section 1 and appendix C, I estimate a VARX to model households' expectations. This method is based on [Fuhrer \(2000\)](#) and [Canzoneri et al. \(2007\)](#). I restricted the specification of the expectation VAR to a VAR in level with 12 lags. However, I show in appendix C that the rejection of the Euler equation does not depend on the choice of a VAR model.

US I estimate a VAR model corresponding to the log of consumption in non-durables per capita and its deflator. I replicate the VARX of [Fuhrer \(2000\)](#) and [Canzoneri et al. \(2007\)](#) to model households' expectations in the US: additional regressors are the fedfund rate, log GDP and log GDI per capita. However, I do not use the Journal of Commerce industrial materials commodity price index for all items and tested some balances of opinion from the Michigan survey without significant modifications.

I also estimate expectations from a VARX using only balances of opinion from the Michigan survey: the Index of Consumer Expectations, Index of Current Economic Conditions and balances of opinion related to financial situation (past and expected), opportunity to purchase durables, vehicles or a house, and expected inflation in the next 12 months.

France I estimate a VAR model corresponding to the log of consumption in non-durables per capita and its deflator. This VAR model also contains 12 lags and is estimated from 1986Q1 to 2013Q4 in level. To this VAR I add the lags of the purchasing power of gross disposable income, of GDP per capita, the Pibor-Euribor and test some balances of opinion from household opinion survey which do not significantly impact the outcome of the VAR.

I also estimate expectations from a VARX using only balances of opinion from the European harmonized consumers survey: general economic situation, unemployment, financial situation, consumer prices, savings intentions, current saving capacity.

B The conditional log-normality hypothesis

The equation under scrutiny takes the following form:

$$(1 + i_t)^{-1} = \beta E_t \left(\frac{U_c(t+1)}{U_c(t)} \frac{1}{\Pi_{t+1}} \right) \quad (10)$$

In the most simple case $U_c(t) = C_t^{-\sigma} = e^{-\sigma c_t}$ with $c_t = \log(C_t)$ $\pi_t = \log(\Pi_t)$

$$E_t \left(\frac{U_c(t+1)}{U_c(t)} \frac{1}{\Pi_{t+1}} \right) = E_t(\exp(-\sigma \Delta c_{t+1} - \pi_{t+1})) = E_t(\exp(a' y_{t+1})) \quad (11)$$

with $a = [-\sigma, -1]'$ and $y_t = [\Delta c_t, \pi_t]'$.

I suppose that households' expectations are formed through the previous VAR model with normal errors ν_t and variance Σ , so that $y_{t+1} = E_t(y_{t+1}) + \nu_{t+1}$. I can then decompose $E_t \exp(a' y_{t+1}) = \exp(a' E_t y_{t+1}) E_t \exp(a' \nu)$, in which the second term can be simplified

$$E_t \exp(a' \nu) = \int \frac{1}{(2\pi)^{\frac{n}{2}} |\Sigma|^{\frac{1}{2}}} \exp \left(a' \nu - \frac{1}{2} \nu' \Sigma^{-1} \nu \right) d\nu$$

first change of variables

$$\Sigma^{-1} = P' D P \quad \text{with } P \in \mathcal{O}(n) \quad \text{and } D \text{ diagonal}$$

$$P \nu = \mu$$

$$\nu = P' \mu$$

$$E_t \exp(a' \nu) = \int \frac{1}{(2\pi)^{\frac{n}{2}} |\Sigma|^{\frac{1}{2}}} \exp \left(a' P' \mu - \frac{1}{2} \mu' D \mu \right) d\mu$$

second change of variables

$$x = \left(\frac{D}{2} \right)^{\frac{1}{2}} \mu - \left(\frac{D}{2} \right)^{-\frac{1}{2}} \frac{P a}{2}$$

$$\text{then } x' x = \frac{1}{2} \mu' D \mu - a' P' \mu + \frac{1}{2} a' P' D^{-1} P a$$

$$\text{we then have } E_t \exp(a' \nu) = \int \frac{1}{(2\pi)^{\frac{n}{2}} |\Sigma|^{\frac{1}{2}}} \exp \left(-x' x + \frac{a' \Sigma a}{2} \right) \left| \frac{D}{2} \right|^{\frac{-1}{2}} dx$$

$$E_t \exp(a' \nu) = \exp \left(\frac{a' \Sigma a}{2} \right) = \exp \left(\frac{\sigma^2}{2} \text{var}(\epsilon^c) + \sigma \text{cov}(\epsilon^c, \epsilon^\pi) + \frac{1}{2} \text{var}(\epsilon^\pi) \right)$$

Then I can rewrite

$$E_t \left(\frac{U_c(t+1)}{U_c(t)} \frac{1}{\Pi_{t+1}} \right) = E_t(\exp(a' y_{t+1})) = \exp(a' E_t(y_{t+1})) \exp \left(\frac{a' \Sigma a}{2} \right) \quad (12)$$

In logarithm, this expression is a linear combination of economic variables including the second moments of the errors. Moreover, when the utility function is CES with habit formation under a multiplicative form as in [Abel \(1990\)](#), this result can be easily generalized.

Although it avoids a first order approximation, this method still forms a strong assumption: second moments Σ are constant. In particular, this assumption shuts down one channel for precautionary savings: when the environment is more uncertain, Σ increases, which is equivalent to a decrease in the interest rate. This channel of uncertainty shocks could account for an important share of business cycle fluctuations (Bloom, 2009).

C Confirming Canzoneri et al. (2007) on French data

If the Euler equation holds and households are rational and forming their expectations through a VAR model, the following should hold under log-normality hypothesis (Appendix B):

$$i_t = \sigma E_t \Delta c_{t+1} + E_t \pi_{t+1} - \ln(\beta) - \left(\frac{\sigma^2}{2} \text{var}(\epsilon^c) + \sigma \text{cov}(\epsilon^c, \epsilon^\pi) + \frac{1}{2} \text{var}(\epsilon^\pi) \right) \quad (13)$$

with $E_t \Delta c_{t+1}$, $E_t \pi_{t+1}$ the expectations formed through a VAR model for consumption growth and inflation respectively and ϵ^c , ϵ^π the errors of this VAR model.

Considering external habit formation or catching-up with the Joneses under a multiplicative form Abel (1990); Gali (1994) modifies the preceding system by adding the lagged value of Δc_t in the Euler equation whose coefficient will depend on both σ and the habit formation parameter γ . The theoretical link (13) between expected consumption and interest rate becomes:

$$i_t = \sigma E_t \Delta c_{t+1} - \gamma(1 - \sigma) \Delta c_t + E_t \pi_{t+1} - \ln(\beta) - \left(\frac{\sigma^2}{2} \text{var}(\epsilon^c) + \sigma \text{cov}(\epsilon^c, \epsilon^\pi) + \frac{1}{2} \text{var}(\epsilon^\pi) \right) \quad (14)$$

with households' utility a CES function of $\frac{C_t}{C_{t-1}^\gamma}$.

It is possible to assess graphically the fit to the Euler equation as in Canzoneri et al. (2007) by assuming a value for σ , γ and plotting actual interest rates with the marginal rate of substitution between present and future consumption, either in real or nominal terms.

Figures 4 depict such comparisons using consumption in non-durables, with and without habit formation. These figures exhibit similar features to the US case reproduced in Figure 5. First, these graphs show that adding *habit formation in the utility function* does not move the *MRS* closer to the actual monetary policy rate. Tables 6 display some statistics for both countries. On average, there are positive spreads between the *MRS* implied by Euler equations and the monetary policy rate. As Canzoneri et al. point out, these spreads "have been well documented in the literature on the equity premium puzzle and the risk free rate puzzle" and are not a strong argument against the Euler equation. However the correlations reported in these tables are weak, even though their sign is not clear cut and depend on the way actual nominal rates are converted in real terms. These correlations are outlined by Canzoneri et al. as a *challenge* for macroeconomists and in particular for monetary policy models.

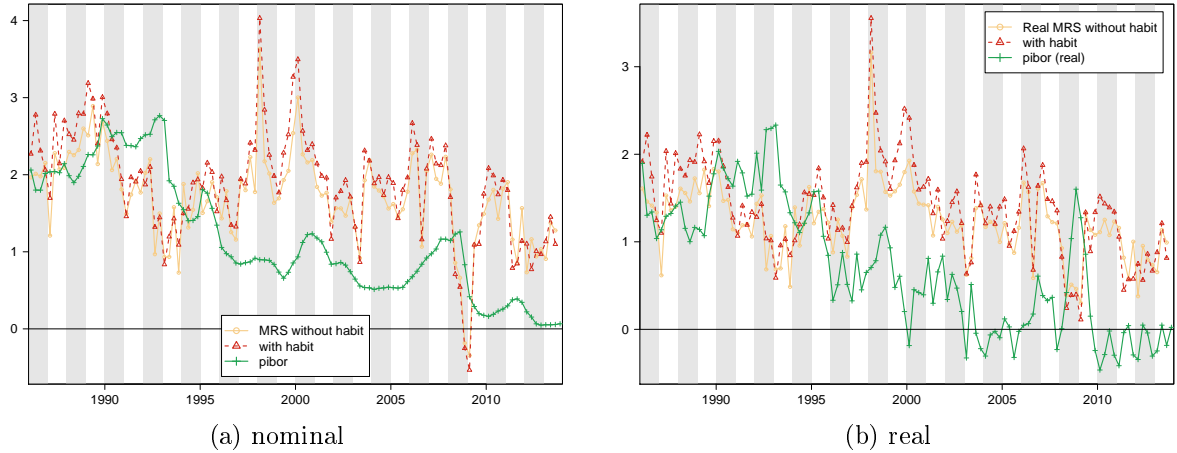


Figure 4: Pibor and MRS with a CES utility function ($\sigma = 2$) with and without habit formation ($\gamma = 0.6$)

	Fedfunds	CES	CES with habit
Mean	0.44	1.89	1.61
Std deviation	0.7	0.75	0.51
Minimum	-0.95	-0.39	0.11
Maximum	2.82	3.65	2.71
Correlation1	1	0.09	0.1
Correlation2	1	-0.01	-0.01

(a) US

	Pibor	CES with habit	CES
Mean	0.71	1.24	1.4
Std deviation	0.73	0.41	0.54
Minimum	-0.46	0.3	0.11
Maximum	2.33	3.16	3.55
Correlation1	1	0.15	0.16
Correlation2	1	0.07	0.1

(b) France

I test two transformations of actual nominal rates in real terms: correlation 1 corresponds to the rate deflated with contemporaneous inflation $i_t - \pi_t$ and correlation 2 uses expected future inflation $i_t - E_t \pi_{t+1}$.

Table 6: Statistics for the actual and MRS (in real terms)

Figure 5 confirms Canzoneri et al.'s qualitative results for the US: the MRS markedly departs from the monetary policy rate "during the Volcker tightening in the early 1980s" and "during the Greenspan easing in the early 2000s". In addition in the mid 1990s, the MRS levelled off while actual rate remained stable. Also, in 2008 consumption nose dived more drastically than the interest rate would have implied: in nominal terms both rates plummeted, but in real terms MRS dropped while the real monetary policy rate peaked.

Figure 4 shows similar mismatch for France: the MRS mirrored the monetary policy rate in the 1990s and 2000s. In 2008, the French rates show the same disconnection in real and nominal terms as in the US.

Robustness to the calibration and the definition of the consumption bundle

Canzoneri et al. (2007) show that their results are robust to the definition of the utility function (with and without habit formation, either internal or external, additive or multiplicative) they also consider recursive utility and liquidity constraints (Campbell and Mankiw, 1990). As another robustness test, I compute similar MRS using other definitions of the consumption bundle and other calibrations of the utility function. Additional results are depicted on Figures 6 with

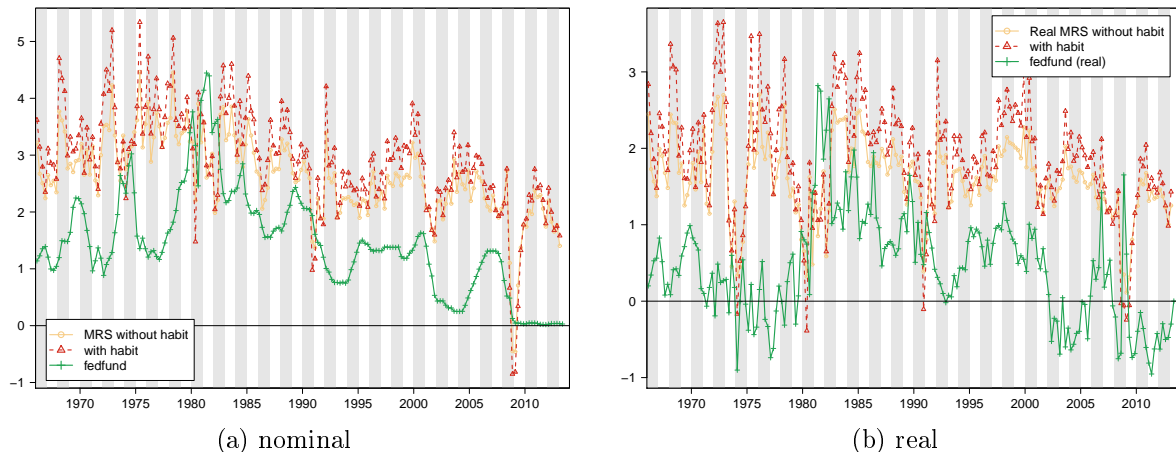


Figure 5: US Fedfund and MRS with a CES utility function ($\sigma = 2$) with and without habit formation ($\gamma = 0.6$)

a CES utility function without habit formation. These figures show, for three standard values of the intertemporal elasticity of substitution (2, 1, 0.5), the MRS computed with the VARX of expectations using four definitions of the consumption bundle (total consumption, consumption excluding durables, excluding energy or excluding committed expenditures (Quinet and Ferrari, 2008)). These interest rates are compared with the 3 month interbank rate and four different household specific rates, deposits and loans with various maturities (see section 1). Comparisons are made both in real and nominal terms. Tables 7 display the correlation matrices of the actual and MRS in real terms.

Figure 6a, 6c and 6e show that in nominal terms, the MRS from the Euler equations does not greatly depend on the consumption bundle considered, at least not in a way which would solve Canzoneri et al.'s challenge. Also they are more volatile than actual interest rates, all the more so when σ is large.

In real terms, deflated by actual inflation, the larger volatility of the MRS is not clear cut (figure 6b, 6d and especially 6f). However, there remains a sizeable discrepancy between the levels of the MRS and interest rates set by the market in the eighties up to the mid-nineties. This stylized fact has often been interpreted in France in line with the liberalisation of financial markets over these years.

For each calibration, the interest rates can be split in two groups based on the correlations (Tables 7): MRS and actual interest rates. Even though the correlations between these groups can be sizeable (up to 50% for the *livret*), the correlations within these groups are much larger and often close to one. These results are in line with Canzoneri et al.'s conclusions.

In addition to testing several definitions of consumption, I tested 3 VAR models to measure households expectations: one in first difference with two lags, one with additional regressors

$(\sigma = 0.5)$								
Euler eq. rate total consumption	1	-	-	-	-	-	-	-
cons. excl. energy	0.86	1	-	-	-	-	-	-
cons. excl. durables	0.94	0.78	1	-	-	-	-	-
cons. excl. committed exp.	0.94	0.83	0.86	1	-	-	-	-
Pibor	0.22	-0.03	0.28	0.19	1	-	-	-
Deposit1y	0.22	-0.05	0.29	0.18	0.99	1	-	-
Livret	0.5	0.07	0.53	0.47	0.62	0.64	1	-
Mortgage	0.27	0.01	0.36	0.21	0.94	0.96	0.66	1

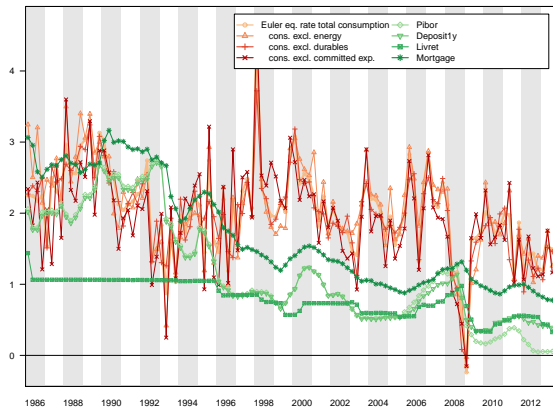
$(\sigma = 1)$								
Euler eq. rate total consumption	1	-	-	-	-	-	-	-
cons. excl. energy	0.87	1	-	-	-	-	-	-
cons. excl. durables	0.93	0.78	1	-	-	-	-	-
cons. excl. committed exp.	0.94	0.87	0.84	1	-	-	-	-
Pibor	0.17	-0.06	0.27	0.13	1	-	-	-
Deposit1y	0.16	-0.08	0.26	0.12	0.99	1	-	-
Livret	0.31	-0.06	0.37	0.31	0.62	0.64	1	-
Mortgage	0.21	-0.02	0.34	0.15	0.94	0.96	0.66	1

$(\sigma = 2)$								
Euler eq. rate total consumption	1	-	-	-	-	-	-	-
cons. excl. energy	0.89	1	-	-	-	-	-	-
cons. excl. durables	0.92	0.78	1	-	-	-	-	-
cons. excl. committed exp.	0.92	0.9	0.8	1	-	-	-	-
Pibor	0.13	-0.07	0.24	0.08	1	-	-	-
Deposit1y	0.11	-0.1	0.23	0.06	0.99	1	-	-
Livret	0.16	-0.14	0.22	0.18	0.62	0.64	1	-
Mortgage	0.16	-0.04	0.3	0.1	0.94	0.96	0.66	1

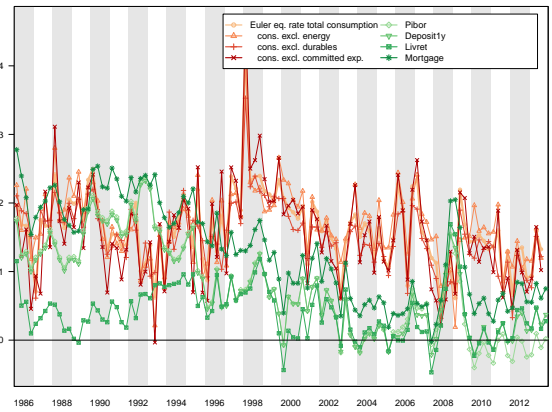
Table 7: Correlation matrix of Euler equation and actual interest rates in real terms

identical to those in the benchmark models of this paper, one in over the year growth rate with the same regressors and households survey data.⁶ The present results are robust to these changes in the VAR model.

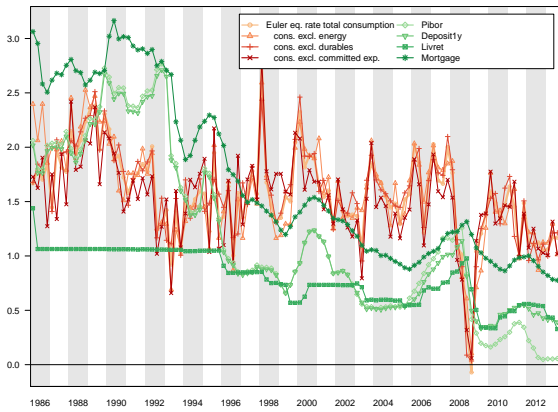
⁶Balances of opinion on households survey data match the evolution of macroeconomic data over the year, in particular gross disposable income, better than over the quarter.



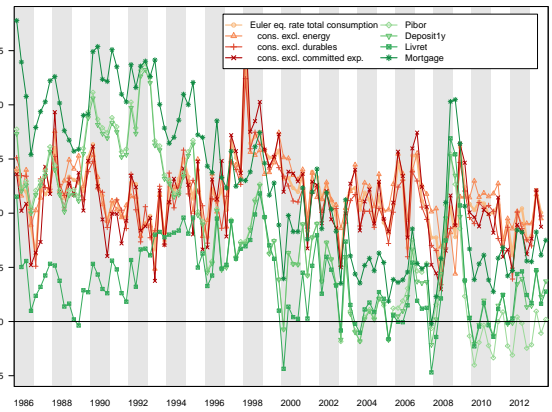
(a) $\sigma = 2$, nominal



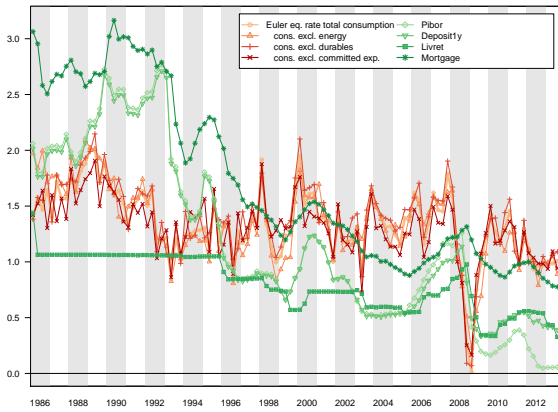
(b) $\sigma = 2$, real



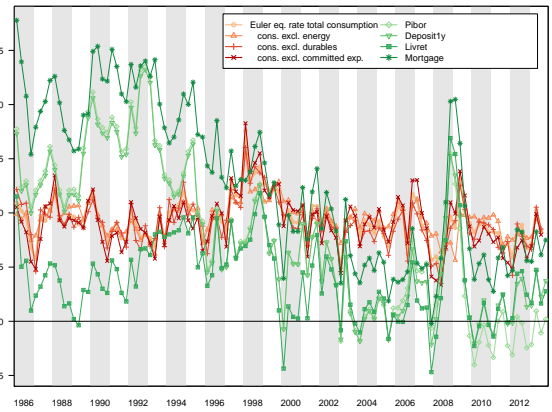
(c) $\sigma = 1$, nominal



(d) $\sigma = 1$, real



(e) $\sigma = 0.5$, nominal



(f) $\sigma = 0.5$, real

Figure 6: (FR) Actual interest rates and MRS for 4 definitions of the consumption bundle with a CES utility function without habit formation

G 9001	J. FAYOLLE et M. FLEURBAEY Accumulation, profitabilité et endettement des entreprises		Macro-economic import functions with imperfect competition - An application to the E.C. Trade	G 9311	J. BOURDIEU - B. COLIN-SEDILLOT Les décisions de financement des entreprises françaises : une évaluation empirique des théories de la structure optimale du capital		analyse économique des politiques française et allemande
G 9002	H. ROUSSE Détection et effets de la multicolinéarité dans les modèles linéaires ordinaires - Un prolongement de la réflexion de BELSLEY, KUH et WELSCH	G 9203	I. STAPIC Les échanges internationaux de services de la France dans le cadre des négociations multilatérales du GATT Juin 1992 (1ère version) Novembre 1992 (version finale)	G 9312	L. BLOCH - B. CŒURÉ Q de Tobin marginal et transmission des chocs financiers	G 9412	J. BOURDIEU - B. CŒURÉ - B. COLIN-SEDILLOT Investissement, incertitude et irréversibilité Quelques développements récents de la théorie de l'investissement
G 9003	P. RALLE et J. TOUJAS-BERNATE Indexation des salaires : la rupture de 1983	G 9204	P. SEVESTRE L'économétrie sur données individuelles-temporelles. Une note introductive	G 9313	Équipes Amadeus (INSEE), Banque de France, Méric (DP) Présentation des propriétés des principaux modèles macroéconomiques du Service Public	G 9413	B. DORMONT - M. PAUCHET L'évaluation de l'élasticité emploi-salaire dépend-elle des structures de qualification ?
G 9004	D. GUELLEC et P. RALLE Compétitivité, croissance et innovation de produit	G 9205	H. ERKEL-ROUSSE Le commerce extérieur et l'environnement international dans le modèle AMADEUS (réestimation 1992)	G 9314	B. CREPON - E. DUGUET Research & Development, competition and innovation	G 9414	I. KABLA Le Choix de breveter une invention
G 9005	P. RALLE et J. TOUJAS-BERNATE Les conséquences de la désindexation. Analyse dans une maquette prix-salaires	G 9206	N. GREENAN et D. GUELLEC Coordination within the firm and endogenous growth	G 9315	B. DORMONT Quelle est l'influence du coût du travail sur l'emploi ?	G 9501	J. BOURDIEU - B. CŒURÉ - B. SEDILLOT Irreversible Investment and Uncertainty: When is there a Value of Waiting?
G 9101	Équipe AMADEUS Le modèle AMADEUS - Première partie - Présentation générale	G 9207	A. MAGNIER et J. TOUJAS-BERNATE Technology and trade: empirical evidences for the major five industrialized countries	G 9316	D. BLANCHET - C. BROUSSE Deux études sur l'âge de la retraite	G 9502	L. BLOCH - B. CŒURÉ Imperfections du marché du crédit, investissement des entreprises et cycle économique
G 9102	J.L. BRILLET Le modèle AMADEUS - Deuxième partie - Propriétés variantielles	G 9208	B. CREPON, E. DUGUET, D. ENCAOUA et P. MOHNEN Cooperative, non cooperative R & D and optimal patent life	G 9317	D. BLANCHET Répartition du travail dans une population hétérogène : deux notes	G 9503	D. GOUX - E. MAURIN Les transformations de la demande de travail par qualification en France Une étude sur la période 1970-1993
G 9103	D. GUELLEC et P. RALLE Endogenous growth and product innovation	G 9209	B. CREPON et E. DUGUET Research and development, competition and innovation: an application of pseudo maximum likelihood methods to Poisson models with heterogeneity	G 9318	D. EYSSARTIER - N. PONTY AMADEUS - an annual macro-economic model for the medium and long term	G 9504	N. GREENAN Technologie, changement organisationnel, qualifications et emploi : une étude empirique sur l'industrie manufacturière
G 9104	H. ROUSSE Le modèle AMADEUS - Troisième partie - Le commerce extérieur et l'environnement international	G 9301	J. TOUJAS-BERNATE Commerce international et concurrence imparfaite : développements récents et implications pour la politique commerciale	G 9319	G. CETTE - Ph. CUNÉO - D. EYSSARTIER - J. GAUTIÉ Les effets sur l'emploi d'un abaissement du coût du travail des jeunes	G 9505	D. GOUX - E. MAURIN Persistence des hiérarchies sectorielles de salaires: un réexamen sur données françaises
G 9105	H. ROUSSE Effets de demande et d'offre dans les résultats du commerce extérieur manufacturé de la France au cours des deux dernières décennies	G 9302	Ch. CASES Durées de chômage et comportements d'offre de travail : une revue de la littérature	G 9401	D. BLANCHET Les structures par âge importent-elles ?	G 9505	D. GOUX - E. MAURIN Bis Persistence of inter-industry wages differentials: a reexamination on matched worker-firm panel data
G 9106	B. CREPON Innovation, taille et concentration : causalités et dynamiques	G 9303	H. ERKEL-ROUSSE Union économique et monétaire : le débat économique	G 9402	J. GAUTIÉ Le chômage des jeunes en France : problème de formation ou phénomène de file d'attente ? Quelques éléments du débat	G 9506	S. JACOBZONE Les liens entre RMI et chômage, une mise en perspective <i>NON PARU - article sorti dans Économie et Prévision n° 122 (1996) - pages 95 à 113</i>
G 9107	B. AMABLE et D. GUELLEC Un panorama des théories de la croissance endogène	G 9304	N. GREENAN - D. GUELLEC / G. BROUSSAUDIER - L. MIOTTI Innovation organisationnelle, dynamisme technologique et performances des entreprises	G 9403	P. QUIRION Les déchets en France : éléments statistiques et économiques	G 9507	G. CETTE - S. MAHFOUZ Le partage primaire du revenu Constat descriptif sur longue période
G 9108	M. GLAUDE et M. MOUTARDIER Une évaluation du coût direct de l'enfant de 1979 à 1989	G 9305	P. JAILLARD Le traité de Maastricht : présentation juridique et historique	G 9404	D. LADIRAY - M. GRUN-REHOMME Lissage par moyennes mobiles - Le problème des extrémités de série	G 9601	Banque de France - CEPREMAP - Direction de la Prévision - Érasme - INSEE - OFCE Structures et propriétés de cinq modèles macro-économiques français
G 9109	P. RALLE et alii France - Allemagne : performances économiques comparées	G 9306	J.L. BRILLET Micro-DMS : présentation et propriétés	G 9405	V. MAILLARD Théorie et pratique de la correction des effets de jours ouvrables	G 9602	Rapport d'activité de la DESE de l'année 1995
G 9110	J.L. BRILLET Micro-DMS NON PARU	G 9307	J.L. BRILLET Micro-DMS - variantes : les tableaux	G 9406	F. ROSENWALD La décision d'investir	G 9603	J. BOURDIEU - A. DRAZNIKS L'octroi de crédit aux PME : une analyse à partir d'informations bancaires
G 9111	A. MAGNIER Effets accélérateur et multiplicateur en France depuis 1970 : quelques résultats empiriques	G 9308	S. JACOBZONE Les grands réseaux publics français dans une perspective européenne	G 9407	S. JACOBZONE Les apports de l'économie industrielle pour définir la stratégie économique de l'hôpital public	G 9604	A. TOPIOL-BENSAÏD Les implantations japonaises en France
G 9112	B. CREPON et G. DUREAU Investissement en recherche-développement : analyse de causalités dans un modèle d'accélérateur généralisé	G 9309	L. BLOCH - B. CŒURE Profitabilité de l'investissement productif et transmission des chocs financiers	G 9408	L. BLOCH, J. BOURDIEU, B. COLIN-SEDILLOT, G. LONGUEVILLE Du défaut de paiement au dépôt de bilan : les banquiers face aux PME en difficulté	G 9605	P. GENIER - S. JACOBZONE Comportements de prévention, consommation d'alcool et tabagie : peut-on parler d'une gestion globale du capital santé ? <i>Une modélisation microéconométrique empirique</i>
G 9113	J.L. BRILLET, H. ERKEL-ROUSSE, J. TOUJAS-BERNATE "France-Allemagne Couplées" - Deux économies vues par une maquette macro-économétrique	G 9310	J. BOURDIEU - B. COLIN-SEDILLOT Les théories sur la structure optimale du capital : quelques points de repère	G 9409	D. EYSSARTIER, P. MAIRE Impacts macro-économiques de mesures d'aide au logement - quelques éléments d'évaluation	G 9606	C. DOZ - F. LENGELART Factor analysis and unobserved component models: an application to the study of French business surveys
G 9201	W.J. ADAMS, B. CREPON, D. ENCAOUA Choix technologiques et stratégies de dissuasion d'entrée			G 9410	F. ROSENWALD Suivi conjoncturel de l'investissement	G 9607	N. GREENAN - D. GUELLEC La théorie coopérative de la firme
G 9202	J. OLIVEIRA-MARTINS, J. TOUJAS-BERNATE			G 9411	C. DEFEUILLEY - Ph. QUIRION Les déchets d'emballages ménagers : une		

G 9608	N. GREENAN - D. GUELLEC Technological innovation and employment reallocation
G 9609	Ph. COUR - F. RUPPRECHT L'intégration asymétrique au sein du continent américain : un essai de modélisation
G 9610	S. DUCHENE - G. FORGEOT - A. JACQUOT Analyse des évolutions récentes de la productivité apparente du travail
G 9611	X. BONNET - S. MAHFOUZ The influence of different specifications of wages-prices spirals on the measure of the NAIRU: the case of France
G 9612	PH. COUR - E. DUBOIS, S. MAHFOUZ, J. PISANI-FERRY The cost of fiscal retrenchment revisited: how strong is the evidence?
G 9613	A. JACQUOT Les flexions des taux d'activité sont-elles seulement conjoncturelles ?
G 9614	ZHANG Yingxiang - SONG Xueqing Lexique macroéconomique Français-Chinois
G 9701	J.L. SCHNEIDER La taxe professionnelle : éléments de cadrage économique
G 9702	J.L. SCHNEIDER Transition et stabilité politique d'un système redistributif
G 9703	D. GOUX - E. MAURIN Train or Pay: Does it Reduce Inequalities to Encourage Firms to Train their Workers?
G 9704	P. GENIER Deux contributions sur dépendance et équité
G 9705	E. DUGUET - N. IUNG R & D Investment, Patent Life and Patent Value An Econometric Analysis at the Firm Level
G 9706	M. HOUEBINE - A. TOPIOL-BENSAÏD Les entreprises internationales en France : une analyse à partir de données individuelles
G 9707	M. HOUEBINE Polarisation des activités et spécialisation des départements en France
G 9708	E. DUGUET - N. GREENAN Le biais technologique : une analyse sur données individuelles
G 9709	J.L. BRILLET Analyzing a small French ECM Model
G 9710	J.L. BRILLET Formalizing the transition process: scenarios for capital accumulation
G 9711	G. FORGEOT - J. GAUTIÉ Insertion professionnelle des jeunes et processus de déclassement
G 9712	E. DUBOIS High Real Interest Rates: the Consequence of a Saving Investment Disequilibrium or of an insufficient Credibility of Monetary Authorities?
G 9713	Bilan des activités de la Direction des Études et Synthèses Économiques - 1996
G 9714	F. LEQUILLER Does the French Consumer Price Index Overstate Inflation?
G 9715	X. BONNET Peut-on mettre en évidence les rigidités à la baisse des salaires nominaux ? Une étude sur quelques grands pays de l'OCDE
G 9716	N. IUNG - F. RUPPRECHT Productivité de la recherche et rendements d'échelle dans le secteur pharmaceutique français
G 9717	E. DUGUET - I. KABLA Appropriation strategy and the motivations to use the patent system in France - An econometric analysis at the firm level
G 9718	L.P. PELÉ - P. RALLE Âge de la retraite : les aspects incitatifs du régime général
G 9719	ZHANG Yingxiang - SONG Xueqing Lexique macroéconomique français-chinois, chinois-français
G 9720	M. HOUEBINE - J.L. SCHNEIDER Mesurer l'influence de la fiscalité sur la localisation des entreprises
G 9721	A. MOURougANE Crédibilité, indépendance et politique monétaire Une revue de la littérature
G 9722	P. AUGERAUD - L. BRIOT Les données comptables d'entreprises Le système intermédiaire d'entreprises Passage des données individuelles aux données sectorielles
G 9723	P. AUGERAUD - J.E. CHAPRON Using Business Accounts for Compiling National Accounts: the French Experience
G 9724	P. AUGERAUD Les comptes d'entreprise par activités - Le passage aux comptes - De la comptabilité d'entreprise à la comptabilité nationale - A <i>paraître</i>
G 9801	H. MICHAUDON - C. PRIGENT Présentation du modèle AMADEUS
G 9802	J. ACCARDO Une étude de comptabilité générationnelle pour la France en 1996
G 9803	X. BONNET - S. DUCHÈNE Apports et limites de la modélisation « Real Business Cycles »
G 9804	C. BARLET - C. DUGUET - D. ENCAOUA - J. PRADEL The Commercial Success of Innovations An econometric analysis at the firm level in French manufacturing
G 9805	P. CAHUC - Ch. GIANELLA - D. GOUX - A. ZILBERBERG Equalizing Wage Differences and Bargaining Power - Evidence from a Panel of French Firms
G 9806	J. ACCARDO - M. JLASSI La productivité globale des facteurs entre 1975 et 1996
G 9807	Bilan des activités de la Direction des Études et Synthèses Économiques - 1997

G 9808	A. MOURougANE Can a Conservative Governor Conduct an Accommodative Monetary Policy?
G 9809	X. BONNET - E. DUBOIS - L. FAUVET Asymétrie des inflations relatives et menus costs : tests sur l'inflation française
G 9810	E. DUGUET - N. IUNG Sales and Advertising with Spillovers at the firm level: Estimation of a Dynamic Structural Model on Panel Data
G 9811	J.P. BERTHIER Congestion urbaine : un modèle de trafic de pointe à courbe débit-vitesse et demande élastique
G 9812	C. PRIGENT La part des salaires dans la valeur ajoutée : une approche macroéconomique
G 9813	A.Th. AERTS L'évolution de la part des salaires dans la valeur ajoutée en France reflète-t-elle les évolutions individuelles sur la période 1979-1994 ?
G 9814	B. SALANIÉ Guide pratique des séries non-stationnaires
G 9901	S. DUCHÈNE - A. JACQUOT Une croissance plus riche en emplois depuis le début de la décennie ? Une analyse en comparaison internationale
G 9902	Ch. COLIN Modélisation des carrières dans Destinie
G 9903	Ch. COLIN Évolution de la dispersion des salaires : un essai de prospective par microsimulation
G 9904	B. CREPON - N. IUNG Innovation, emploi et performances
G 9905	B. CREPON - Ch. GIANELLA Wages inequalities in France 1969-1992 An application of quantile regression techniques
G 9906	C. BONNET - R. MAHIEU Microsimulation techniques applied to inter-generational transfers - Pensions in a dynamic framework: the case of France
G 9907	F. ROSENWALD L'impact des contraintes financières dans la décision d'investissement
G 9908	Bilan des activités de la DESE - 1998
G 9909	J.P. ZOYEM Contrat d'insertion et sortie du RMI Évaluation des effets d'une politique sociale
G 9910	Ch. COLIN - FI. LEGROS - R. MAHIEU Bilans contributifs comparés des régimes de retraite du secteur privé et de la fonction publique
G 9911	G. LAROQUE - B. SALANIÉ Une décomposition du non-emploi en France
G 9912	B. SALANIÉ Une maquette analytique de long terme du marché du travail
G 9912 Bis	Ch. GIANELLA Une estimation de l'élasticité de l'emploi peu qualifié à son coût
G 9913	Division « Redistribution et Politiques Sociales » Le modèle de microsimulation dynamique DESTINIE
G 9914	E. DUGUET Macro-commandes SAS pour l'économétrie des panels et des variables qualitatives
G 9915	R. DUHAUTOIS Évolution des flux d'emplois en France entre 1990 et 1996 : une étude empirique à partir du fichier des bénéficiaires réels normaux (BRN)
G 9916	J.Y. FOURNIER Extraction du cycle des affaires : la méthode de Baxter et King
G 9917	B. CRÉPON - R. DESPLATZ - J. MAIRESSE Estimating price cost margins, scale economies and workers' bargaining power at the firm level
G 9918	Ch. GIANELLA - Ph. LAGARDE Productivity of hours in the aggregate production function: an evaluation on a panel of French firms from the manufacturing sector
G 9919	S. AUDRIC - P. GIVORD - C. PROST Évolution de l'emploi et des coûts par qualification entre 1982 et 1996
G 2000/01	R. MAHIEU Les déterminants des dépenses de santé : une approche macroéconomique
G 2000/02	C. ALLARD-PRIGENT - H. GUILMEAU - A. QUINET The real exchange rate as the relative price of nontradables in terms of tradables: theoretical investigation and empirical study on French data
G 2000/03	J.-Y. FOURNIER L'approximation du filtre passe-bande proposée par Christiano et Fitzgerald
G 2000/04	Bilan des activités de la DESE - 1999
G 2000/05	B. CREPON - F. ROSENWALD Investissement et contraintes de financement : le poids du cycle Une estimation sur données françaises
G 2000/06	A. FLIPO Les comportements matrimoniaux de fait
G 2000/07	R. MAHIEU - B. SÉDILLOT Microsimulations of the retirement decision: a supply side approach
G 2000/08	C. AUDENIS - C. PROST Déficit conjoncturel : une prise en compte des conjonctures passées
G 2000/09	R. MAHIEU - B. SÉDILLOT Équivalent patrimonial de la rente et souscription de retraite complémentaire
G 2000/10	R. DUHAUTOIS Ralentissement de l'investissement : petites ou grandes entreprises ? industrie ou tertiaire ?
G 2000/11	G. LAROQUE - B. SALANIÉ Temps partiel féminin et incitations financières à l'emploi
G2000/12	Ch. GIANELLA Local unemployment and wages

G2000/13	B. CREPON - Th. HECKEL - Informatisation en France : une évaluation à partir de données individuelles - Computerization in France: an evaluation based on individual company data
G2001/01	F. LEQUILLER - La nouvelle économie et la mesure de la croissance du PIB - The new economy and the measurement of GDP growth
G2001/02	S. AUDRIC La reprise de la croissance de l'emploi profite-t-elle aussi aux non-diplômés ?
G2001/03	I. BRAUN-LEMAIRE Évolution et répartition du surplus de productivité
G2001/04	A. BEAUDU - Th. HECKEL Le canal du crédit fonctionne-t-il en Europe ? Une étude de l'hétérogénéité des comportements d'investissement à partir de données de bilan agrégées
G2001/05	C. AUDENIS - P. BISCOURP - N. FOURCADE - O. LOISEL Testing the augmented Solow growth model: An empirical reassessment using panel data
G2001/06	R. MAHIEU - B. SÉDILLOT Départ à la retraite, irréversibilité et incertitude
G2001/07	Bilan des activités de la DESE - 2000
G2001/08	J. Ph. GAUDEMET Les dispositifs d'acquisition à titre facultatif d'annuités viagères de retraite
G2001/09	B. CRÉPON - Ch. GIANELLA Fiscalité, coût d'usage du capital et demande de facteurs : une analyse sur données individuelles
G2001/10	B. CRÉPON - R. DESPLATZ Évaluation des effets des dispositifs d'allègements de charges sociales sur les bas salaires
G2001/11	J.-Y. FOURNIER Comparaison des salaires des secteurs public et privé
G2001/12	J.-P. BERTHIER - C. JAULENT R. CONVENEVOLE - S. PISANI Une méthodologie de comparaison entre consommations intermédiaires de source fiscale et de comptabilité nationale
G2001/13	P. BISCOURP - Ch. GIANELLA Substitution and complementarity between capital, skilled and less skilled workers: an analysis at the firm level in the French manufacturing industry
G2001/14	I. ROBERT-BOBÉE Modelling demographic behaviours in the French microsimulation model Destinie: An analysis of future change in completed fertility
G2001/15	J.-P. ZOYEM Diagnostic sur la pauvreté et calendrier de revenus : le cas du "Panel européen des ménages"
G2001/16	J.-Y. FOURNIER - P. GIVORD La réduction des taux d'activité aux âges extrêmes, une spécificité française ?

G2001/17	C. AUDENIS - P. BISCOURP - N. RIEDINGER Existe-t-il une asymétrie dans la transmission du prix du brut aux prix des carburants ?
G2002/01	F. MAGNIEN - J.-L. TAVERNIER - D. THESMAR Les statistiques internationales de PIB par habitant en standard de pouvoir d'achat : une analyse des résultats
G2002/02	Bilan des activités de la DESE - 2001
G2002/03	B. SÉDILLOT - E. WALRAET La cessation d'activité au sein des couples : y a-t-il interdépendance des choix ?
G2002/04	G. BRILHAULT - Rétropolation des séries de FBCF et calcul du capital fixe en SEC-95 dans les comptes nationaux français - Retropolation of the investment series (GFCF) and estimation of fixed capital stocks on the ESA-95 basis for the French balance sheets
G2002/05	P. BISCOURP - B. CRÉPON - T. HECKEL - N. RIEDINGER How do firms respond to cheaper computers? Microeconomic evidence for France based on a production function approach
G2002/06	C. AUDENIS - J. DEROYON - N. FOURCADE L'impact des nouvelles technologies de l'information et de la communication sur l'économie française - un bouclage macro-économique
G2002/07	J. BARDAJI - B. SÉDILLOT - E. WALRAET Évaluation de trois réformes du Régime Général d'assurance vieillesse à l'aide du modèle de microsimulation DESTINIE
G2002/08	J.-P. BERTHIER Réflexions sur les différentes notions de volume dans les comptes nationaux : comptes aux prix d'une année fixe ou aux prix de l'année précédente, séries chaînées
G2002/09	F. HILD Les soldes d'opinion résumement-ils au mieux les réponses des entreprises aux enquêtes de conjoncture ?
G2002/10	I. ROBERT-BOBÉE Les comportements démographiques dans le modèle de microsimulation Destinie - Une comparaison des estimations issues des enquêtes Jeunes et Carrières 1997 et Histoire Familiale 1999
G2002/11	J.-P. ZOYEM La dynamique des bas revenus : une analyse des entrées-sorties de pauvreté
G2002/12	F. HILD Prévisions d'inflation pour la France
G2002/13	M. LECLAIR Réduction du temps de travail et tensions sur les facteurs de production
G2002/14	E. WALRAET - A. VINCENT - Analyse de la redistribution intragénérationnelle dans le système de retraite des salariés du privé - Une approche par microsimulation - Intragenerational distributional analysis in the french private sector pension scheme - A microsimulation approach

G2002/15	P. CHONE - D. LE BLANC - I. ROBERT-BOBÉE Offre de travail féminine et garde des jeunes enfants
G2002/16	F. MAUREL - S. GREGOIR Les indices de compétitivité des pays : interprétation et limites
G2003/01	N. RIEDINGER - E. HAUVY Le coût de dépollution atmosphérique pour les entreprises françaises : Une estimation à partir de données individuelles
G2003/02	P. BISCOURP et F. KRAMARZ Création d'emplois, destruction d'emplois et internationalisation des entreprises industrielles françaises : une analyse sur la période 1986-1992
G2003/03	Bilan des activités de la DESE - 2002
G2003/04	P.-O. BEFFY - J. DEROYON - N. FOURCADE - S. GREGOIR - N. LAÏB - B. MONFORT Évolutions démographiques et croissance : une projection macro-économique à l'horizon 2020
G2003/05	P. AUBERT La situation des salariés de plus de cinquante ans dans le secteur privé
G2003/06	P. AUBERT - B. CRÉPON Age, salaire et productivité La productivité des salariés décline-t-elle en fin de carrière ?
G2003/07	H. BARON - P.O. BEFFY - N. FOURCADE - R. MAHIEU Le ralentissement de la productivité du travail au cours des années 1990
G2003/08	P.-O. BEFFY - B. MONFORT Patrimoine des ménages, dynamique d'allocation et comportement de consommation
G2003/09	P. BISCOURP - N. FOURCADE Peut-on mettre en évidence l'existence de rigidités à la baisse des salaires à partir de données individuelles ? Le cas de la France à la fin des années 90
G2003/10	M. LECLAIR - P. PETIT Présence syndicale dans les firmes : quel impact sur les inégalités salariales entre les hommes et les femmes ?
G2003/11	P.-O. BEFFY - X. BONNET - M. DARRACQ-PARIES - B. MONFORT MZE: a small macro-model for the euro area
G2004/01	P. AUBERT - M. LECLAIR La compétitivité exprimée dans les enquêtes trimestrielles sur la situation et les perspectives dans l'industrie
G2004/02	M. DUÉE - C. REBILLARD La dépendance des personnes âgées : une projection à long terme
G2004/03	S. RASPILLER - N. RIEDINGER Régulation environnementale et choix de localisation des groupes français
G2004/04	A. NABOULET - S. RASPILLER Les déterminants de la décision d'investir : une approche par les perceptions subjectives des firmes

G2004/05	N. RAGACHE La déclaration des enfants par les couples non mariés est-elle fiscalement optimale ?
G2004/06	M. DUÉE L'impact du chômage des parents sur le devenir scolaire des enfants
G2004/07	P. AUBERT - E. CAROLI - M. ROGER New Technologies, Workplace Organisation and the Age Structure of the Workforce: Firm-Level Evidence
G2004/08	E. DUGUET - C. LELARGE Les brevets accroissent-ils les incitations privées à innover ? Un examen microéconométrique
G2004/09	S. RASPILLER - P. SILLARD Affiliating versus Subcontracting: the Case of Multinationals
G2004/10	J. BOISSINOT - C. L'ANGEVIN - B. MONFORT Public Debt Sustainability: Some Results on the French Case
G2004/11	S. ANANIAN - P. AUBERT Travailleurs âgés, nouvelles technologies et changements organisationnels : un réexamen à partir de l'enquête « REPONSE »
G2004/12	X. BONNET - H. PONCET Structures de revenus et propensions différentes à consommer - Vers une équation de consommation des ménages plus robuste en prévision pour la France
G2004/13	C. PICART Évaluer la rentabilité des sociétés non financières
G2004/14	J. BARDAJI - B. SÉDILLOT - E. WALRAET Les retraites du secteur public : projections à l'horizon 2040 à l'aide du modèle de microsimulation DESTINIE
G2005/01	S. BUFFETEAU - P. GODEFROY Conditions de départ en retraite selon l'âge de fin d'études : analyse prospective pour les générations 1945 à 1974
G2005/02	C. AFSA - S. BUFFETEAU L'évolution de l'activité féminine en France : une approche par pseudo-panel
G2005/03	P. AUBERT - P. SILLARD Délocalisations et réductions d'effectifs dans l'industrie française
G2005/04	M. LECLAIR - S. ROUX Mesure et utilisation des emplois instables dans les entreprises
G2005/05	C. L'ANGEVIN - S. SERRAVALLE Performances à l'exportation de la France et de l'Allemagne - Une analyse par secteur et destination géographique
G2005/06	Bilan des activités de la Direction des Études et Synthèses Économiques - 2004
G2005/07	S. RASPILLER La concurrence fiscale : principaux enseignements de l'analyse économique
G2005/08	C. L'ANGEVIN - N. LAÏB Éducation et croissance en France et dans un panel de 21 pays de l'OCDE

G2005/09	N. FERRARI Prévoir l'investissement des entreprises Un indicateur des révisions dans l'enquête de conjoncture sur les investissements dans l'industrie.
G2005/10	P.-O. BEFFY - C. L'ANGEVIN Chômage et boucle prix-salaires : apport d'un modèle « qualifiés/peu qualifiés »
G2005/11	B. HEITZ A two-states Markov-switching model of inflation in France and the USA: credible target VS inflation spiral
G2005/12	O. BIAU - H. ERKEL-ROUSSE - N. FERRARI Réponses individuelles aux enquêtes de conjoncture et prévision macroéconomiques : Exemple de la prévision de la production manufacturière
G2005/13	P. AUBERT - D. BLANCHET - D. BLAU The labour market after age 50: some elements of a Franco-American comparison
G2005/14	D. BLANCHET - T. DEBRAND - P. DOURGNON - P. POLLET L'enquête SHARE : présentation et premiers résultats de l'édition française
G2005/15	M. DUÉE La modélisation des comportements démographiques dans le modèle de microsimulation DESTINIE
G2005/16	H. RAOUI - S. ROUX Étude de simulation sur la participation versée aux salariés par les entreprises
G2006/01	C. BONNET - S. BUFFETEAU - P. GODEFROY Disparités de retraite de droit direct entre hommes et femmes : quelles évolutions ?
G2006/02	C. PICART Les gazelles en France
G2006/03	P. AUBERT - B. CRÉPON - P. ZAMORA Le rendement apparent de la formation continue dans les entreprises : effets sur la productivité et les salaires
G2006/04	J.-F. OUVARD - R. RATHELOT Demographic change and unemployment: what do macroeconomic models predict?
G2006/05	D. BLANCHET - J.-F. OUVARD Indicateurs d'engagements implicites des systèmes de retraite : chiffrages, propriétés analytiques et réactions à des chocs démographiques types
G2006/06	G. BIAU - O. BIAU - L. ROUVIERE Nonparametric Forecasting of the Manufacturing Output Growth with Firm-level Survey Data
G2006/07	C. AFSA - P. GIVORD Le rôle des conditions de travail dans les absences pour maladie
G2006/08	P. SILLARD - C. L'ANGEVIN - S. SERRAVALLE Performances comparées à l'exportation de la France et de ses principaux partenaires Une analyse structurelle sur 12 ans
G2006/09	X. BOUTIN - S. QUANTIN Une méthodologie d'évaluation comptable du coût du capital des entreprises françaises : 1984-2002

G2006/10	C. AFSA L'estimation d'un coût implicite de la pénibilité du travail chez les travailleurs âgés
G2006/11	C. LELARGE Les entreprises (industrielles) françaises sont-elles à la frontière technologique ?
G2006/12	O. BIAU - N. FERRARI Théorie de l'opinion Faut-il pondérer les réponses individuelles ?
G2006/13	A. KOUBI - S. ROUX Une réinterprétation de la relation entre productivité et inégalités salariales dans les entreprises
G2006/14	R. RATHELOT - P. SILLARD The impact of local taxes on plants location decision
G2006/15	L. GONZALEZ - C. PICART Diversification, recentrage et poids des activités de support dans les groupes (1993-2000)
G2007/01	D. SRAER Allègements de cotisations patronales et dynamique salariale
G2007/02	V. ALBOUY - L. LEQUIEN Les rendements non monétaires de l'éducation : le cas de la santé
G2007/03	D. BLANCHET - T. DEBRAND Aspiration à la retraite, santé et satisfaction au travail : une comparaison européenne
G2007/04	M. BARLET - L. CRUSSON Quel impact des variations du prix du pétrole sur la croissance française ?
G2007/05	C. PICART Flux d'emploi et de main-d'œuvre en France : un réexamen
G2007/06	V. ALBOUY - C. TAVAN Massification et démocratisation de l'enseignement supérieur en France
G2007/07	T. LE BARBANCHON The Changing response to oil price shocks in France: a DSGE type approach
G2007/08	T. CHANEY - D. SRAER - D. THESMAR Collateral Value and Corporate Investment Evidence from the French Real Estate Market
G2007/09	J. BOISSINOT Consumption over the Life Cycle: Facts for France
G2007/10	C. AFSA Interpréter les variables de satisfaction : l'exemple de la durée du travail
G2007/11	R. RATHELOT - P. SILLARD Zones Franches Urbaines : quels effets sur l'emploi salarié et les créations d'établissements ?
G2007/12	V. ALBOUY - B. CRÉPON Aléa moral en santé : une évaluation dans le cadre du modèle causal de Rubin
G2008/01	C. PICART Les PME françaises : rentables mais peu dynamiques

G2008/02	P. BISCOURP - X. BOUTIN - T. VERGÉ The Effects of Retail Regulations on Prices Evidence from the Loi Galland
G2008/03	Y. BARBESOL - A. BRIANT Économies d'agglomération et productivité des entreprises : estimation sur données individuelles françaises
G2008/04	D. BLANCHET - F. LE GALLO Les projections démographiques : principaux mécanismes et retour sur l'expérience française
G2008/05	D. BLANCHET - F. TOUTLEMONDE Évolutions démographiques et déformation du cycle de vie active : quelles relations ?
G2008/06	M. BARLET - D. BLANCHET - L. CRUSSON Internationalisation et flux d'emplois : que dit une approche comptable ?
G2008/07	C. LELARGE - D. SRAER - D. THESMAR Entrepreneurship and Credit Constraints - Evidence from a French Loan Guarantee Program
G2008/08	X. BOUTIN - L. JANIN Are Prices Really Affected by Mergers?
G2008/09	M. BARLET - A. BRIANT - L. CRUSSON Concentration géographique dans l'industrie manufacturière et dans les services en France : une approche par un indicateur en continu
G2008/10	M. BEFFY - É. COUDIN - R. RATHELOT Who is confronted to insecure labor market histories? Some evidence based on the French labor market transition
G2008/11	M. ROGER - E. WALRAET Social Security and Well-Being of the Elderly: the Case of France
G2008/12	C. AFSA Analyser les composantes du bien-être et de son évolution Une approche empirique sur données individuelles
G2008/13	M. BARLET - D. BLANCHET - T. LE BARBANCHON Microsimuler le marché du travail : un prototype
G2009/01	P.-A. PIONNIER Le partage de la valeur ajoutée en France, 1949-2007
G2009/02	Laurent CLAVEL - Christelle MINODIER A Monthly Indicator of the French Business Climate
G2009/03	H. ERKEL-ROUSSE - C. MINODIER Do Business Tendency Surveys in Industry and Services Help in Forecasting GDP Growth? A Real-Time Analysis on French Data
G2009/04	P. GIVORD - L. WILNER Les contrats temporaires : trappe ou marche-pied vers l'emploi stable ?
G2009/05	G. LALANNE - P.-A. PIONNIER - O. SIMON Le partage des fruits de la croissance de 1950 à 2008 : une approche par les comptes de surplus
G2009/06	L. DAVEZIES - X. D'HAULTFOEUILLE Faut-il pondérer ?... Ou l'éternelle question de l'économètre confronté à des données d'enquête

G2009/07	S. QUANTIN - S. RASPILLER - S. SERRAVALLE Commerce intragroupe, fiscalité et prix de transferts : une analyse sur données françaises
G2009/08	M. CLERC - V. MARCUS Élasticités-prix des consommations énergétiques des ménages
G2009/09	G. LALANNE - E. POULIQUEN - O. SIMON Prix du pétrole et croissance potentielle à long terme
G2009/10	D. BLANCHET - J. LE CACHEUX - V. MARCUS Adjusted net savings and other approaches to sustainability: some theoretical background
G2009/11	V. BELLAMY - G. CONSALES - M. FESSEAU - S. LE LAIDIER - É. RAYNAUD Une décomposition du compte des ménages de la comptabilité nationale par catégorie de ménage en 2003
G2009/12	J. BARDAJI - F. TALLET Detecting Economic Regimes in France: a Qualitative Markov-Switching Indicator Using Mixed Frequency Data
G2009/13	R. AEBERHARDT - D. FOUGÈRE - R. RATHELOT Discrimination à l'embauche : comment exploiter les procédures de <i>testing</i> ?
G2009/14	Y. BARBESOL - P. GIVORD - S. QUANTIN Partage de la valeur ajoutée, approche par données microéconomiques
G2009/15	I. BUONO - G. LALANNE The Effect of the Uruguay round on the Intensive and Extensive Margins of Trade
G2010/01	C. MINODIER Avantages comparés des séries des premières valeurs publiées et des séries des valeurs révisées - Un exercice de prévision en temps réel de la croissance trimestrielle du PIB en France
G2010/02	V. ALBOUY - L. DAVEZIES - T. DEBRAND Health Expenditure Models: a Comparison of Five Specifications using Panel Data
G2010/03	C. KLEIN - O. SIMON Le modèle MÉSANGE réestimé en base 2000 Tome 1 – Version avec volumes à prix constants
G2010/04	M.-É. CLERC - É. COUDIN L'IPC, miroir de l'évolution du coût de la vie en France ? Ce qu'apporte l'analyse des courbes d'Engel
G2010/05	N. CECI-RENAUD - P.-A. CHEVALIER Les seuils de 10, 20 et 50 salariés : impact sur la taille des entreprises françaises
G2010/06	R. AEBERHARDT - J. POUGET National Origin Differences in Wages and Hierarchical Positions - Evidence on French Full-Time Male Workers from a matched Employer-Employee Dataset
G2010/07	S. BLASCO - P. GIVORD Les trajectoires professionnelles en début de vie active : quel impact des contrats temporaires ?
G2010/08	P. GIVORD Méthodes économétriques pour l'évaluation de politiques publiques

G2010/09	P.-Y. CABANNES - V. LAPÈGUE - E. POULIQUEN - M. BEFFY - M. GAINI Quelle croissance de moyen terme après la crise ?
G2010/10	I. BUONO - G. LALANNE La réaction des entreprises françaises à la baisse des tarifs douaniers étrangers
G2010/11	R. RATHELOT - P. SILLARD L'apport des méthodes à noyaux pour mesurer la concentration géographique - Application à la concentration des immigrés en France de 1968 à 1999
G2010/12	M. BARATON - M. BEFFY - D. FOUGÈRE Une évaluation de l'effet de la réforme de 2003 sur les départs en retraite - Le cas des enseignants du second degré public
G2010/13	D. BLANCHET - S. BUFFETEAU - E. CRENNER S. LE MINEZ Le modèle de microsimulation Destinie 2 : principales caractéristiques et premiers résultats
G2010/14	D. BLANCHET - E. CRENNER Le bloc retraites du modèle Destinie 2 : guide de l'utilisateur
G2010/15	M. BARLET - L. CRUSSON - S. DUPUCH - F. PUECH Des services échangés aux services échangeables : une application sur données françaises
G2010/16	M. BEFFY - T. KAMIONKA Public-private wage gaps: is civil-servant human capital sector-specific?
G2010/17	P.-Y. CABANNES - H. ERKEL-ROUSSE - G. LALANNE - O. MONSO - E. POULIQUEN Le modèle Mésange réestimé en base 2000 Tome 2 - Version avec volumes à prix chaînés
G2010/18	R. AEBERHARDT - L. DAVEZIES Conditional Logit with one Binary Covariate: Link between the Static and Dynamic Cases
G2011/01	T. LE BARBANCHON - B. OURLIAC - O. SIMON Les marchés du travail français et américain face aux chocs conjoncturels des années 1986 à 2007 : une modélisation DSGE
G2011/02	C. MARBOT Une évaluation de la réduction d'impôt pour l'emploi de salariés à domicile
G2011/03	L. DAVEZIES Modèles à effets fixes, à effets aléatoires, modèles mixtes ou multi-niveaux : propriétés et mises en œuvre des modélisations de l'hétérogénéité dans le cas de données groupées
G2011/04	M. ROGER - M. WASMER Heterogeneity matters: labour productivity differentiated by age and skills
G2011/05	J.-C. BRICONGNE - J.-M. FOURNIER V. LAPÈGUE - O. MONSO De la crise financière à la crise économique L'impact des perturbations financières de 2007 et 2008 sur la croissance de sept pays industrialisés
G2011/06	P. CHARNOZ - É. COUDIN - M. GAINI Wage inequalities in France 1976-2004: a quantile regression analysis
G2011/07	M. CLERC - M. GAINI - D. BLANCHET Recommendations of the Stiglitz-Sen-Fitoussi Report: A few illustrations
G2011/08	M. BACHELET - M. BEFFY - D. BLANCHET Projeter l'impact des réformes des retraites sur l'activité des 55 ans et plus : une comparaison de trois modèles
G2011/09	C. LOUVOT-RUNAVOT L'évaluation de l'activité dissimulée des entreprises sur la base des contrôles fiscaux et son insertion dans les comptes nationaux
G2011/10	A. SCHREIBER - A. VICARD La tertiarisation de l'économie française et le ralentissement de la productivité entre 1978 et 2008
G2011/11	M.-É. CLERC - O. MONSO - E. POULIQUEN Les inégalités entre générations depuis le baby-boom
G2011/12	C. MARBOT - D. ROY Évaluation de la transformation de la réduction d'impôt en crédit d'impôt pour l'emploi de salariés à domicile en 2007
G2011/13	P. GIVORD - R. RATHELOT - P. SILLARD Place-based tax exemptions and displacement effects: An evaluation of the Zones Franches Urbaines program
G2011/14	X. D'HAULTFOEUILLE - P. GIVORD - X. BOUTIN The Environmental Effect of Green Taxation: the Case of the French "Bonus/Malus"
G2011/15	M. BARLET - M. CLERC - M. GARNEO - V. LAPÈGUE - V. MARCUS La nouvelle version du modèle MZE, modèle macroéconométrique pour la zone euro
G2011/16	R. AEBERHARDT - I. BUONO - H. FADINGER Learning, Incomplete Contracts and Export Dynamics: theory and Evidence from French Firms
G2011/17	C. KERDRAIN - V. LAPÈGUE Restrictive Fiscal Policies in Europe: What are the Likely Effects?
G2012/01	P. GIVORD - S. QUANTIN - C. TREVIEN A Long-Term Evaluation of the First Generation of the French Urban Enterprise Zones
G2012/02	N. CECI-RENAUD - V. COTTET Politique salariale et performance des entreprises
G2012/03	P. FÉVRIER - L. WILNER Do Consumers Correctly Expect Price Reductions? Testing Dynamic Behavior
G2012/04	M. GAINI - A. LEDUC - A. VICARD School as a shelter? School leaving-age and the business cycle in France
G2012/05	M. GAINI - A. LEDUC - A. VICARD A scarred generation? French evidence on young people entering into a tough labour market
G2012/06	P. AUBERT - M. BACHELET Disparités de montant de pension et redistribution dans le système de retraite français
G2012/07	R. AEBERHARDT - P. GIVORD - C. MARBOT Spillover Effect of the Minimum Wage in France: An Unconditional Quantile Regression Approach

G2012/08	A. EIDELMAN - F. LANGUMIER - A. VICARD Prélèvements obligatoires reposant sur les ménages : des canaux redistributifs différents en 1990 et 2010
G2012/09	O. BARGAIN - A. VICARD Le RMI et son successeur le RSA découragent-ils certains jeunes de travailler ? Une analyse sur les jeunes autour de 25 ans
G2012/10	C. MARBOT - D. ROY Projections du coût de l'APA et des caractéristiques de ses bénéficiaires à l'horizon 2040 à l'aide du modèle Destinie
G2012/11	A. MAUROUX Le crédit d'impôt dédié au développement durable : une évaluation économétrique
G2012/12	V. COTTET - S. QUANTIN - V. RÉGNIER Coût du travail et allègements de charges : une estimation au niveau établissement de 1996 à 2008
G2012/13	X. D'HAULTFOEUILLE - P. FÉVRIER - L. WILNER Demand Estimation in the Presence of Revenue Management
G2012/14	D. BLANCHET - S. LE MINEZ Joint macro/micro evaluations of accrued-to-date pension liabilities: an application to French reforms
G2013/01-F1301	T. DEROYON - A. MONTAUT - P.-A. PIONNIER Utilisation rétrospective de l'enquête Emploi à une fréquence mensuelle : apport d'une modélisation espace-état
G2013/02-F1302	C. TREVIEN Habiter en HLM : quel avantage monétaire et quel impact sur les conditions de logement ?
G2013/03	A. POISSONNIER Temporal disaggregation of stock variables - The Chow-Lin method extended to dynamic models
G2013/04	P. GIVORD - C. MARBOT Does the cost of child care affect female labor market participation? An evaluation of a French reform of childcare subsidies
G2013/05	G. LAME - M. LEQUIEN - P.-A. PIONNIER Interpretation and limits of sustainability tests in public finance
G2013/06	C. BELLEGO - V. DORTET-BERNADET La participation aux pôles de compétitivité : quelle incidence sur les dépenses de R&D et l'activité des PME et ETI ?
G2013/07	P.-Y. CABANNES - A. MONTAUT - P.-A. PIONNIER Évaluer la productivité globale des facteurs en France : l'apport d'une mesure de la qualité du capital et du travail
G2013/08	R. AEBERHARDT - C. MARBOT Evolution of Instability on the French Labour Market During the Last Thirty Years
G2013/09	J.-B. BERNARD - G. CLÉAUD Oil price: the nature of the shocks and the impact on the French economy
G2013/10	G. LAME Was there a « Greenspan Conundrum » in the Euro area?
G2013/11	P. CHONÉ - F. EVAÏN - L. WILNER - E. YILMAZ Introducing activity-based payment in the hospital industry : Evidence from French data
G2013/12	C. GRISLAIN-LETREMY Natural Disasters: Exposure and Underinsurance
G2013/13	P.-Y. CABANNES - V. COTTET - Y. DUBOIS - C. LELARGE - M. SICSIC French Firms in the Face of the 2008/2009 Crisis
G2013/14	A. POISSONNIER - D. ROY Households Satellite Account for France in 2010. Methodological issues on the assessment of domestic production
G2013/15	G. CLÉAUD - M. LEMOINE - P.-A. PIONNIER Which size and evolution of the government expenditure multiplier in France (1980-2010)?
G2014/01	M. BACHELET - A. LEDUC - A. MARINO Les biographies du modèle Destinie II : rebasage et projection
G2014/02	B. GARBINTI L'achat de la résidence principale et la création d'entreprises sont-ils favorisés par les donations et héritages ?
G2014/03	N. CECI-RENAUD - P. CHARNOZ - M. GAINI Évolution de la volatilité des revenus salariaux du secteur privé en France depuis 1968
G2014/04	P. AUBERT Modalités d'application des réformes des retraites et prévisibilité du montant de pension
G2014/05	C. GRISLAIN-LETREMY - A. KATOSKY The Impact of Hazardous Industrial Facilities on Housing Prices: A Comparison of Parametric and Semiparametric Hedonic Price Models
G2014//06	J.-M. DAUSSIN-BENICHOU - A. MAUROUX Turning the heat up. How sensitive are households to fiscal incentives on energy efficiency investments?
G2014/07	C. LABONNE - G. LAMÉ Credit Growth and Capital Requirements: Binding or Not?
G2014/08	C. GRISLAIN-LETREMY et C. TREVIEN The Impact of Housing Subsidies on the Rental Sector: the French Example
G2014 09	M. LEQUIEN et A. MONTAUT Croissance potentielle en France et en zone euro : un tour d'horizon des méthodes d'estimation
G2014/10	B. GARBINTI - P. LAMARCHE Les hauts revenus épargnent-ils davantage ?
G2014/11	D. AUDENAERT - J. BARDAJI - R. LARDEUX - M. ORAND - M. SICSIC Wage Resilience in France since the Great Recession
G2014/12	F. ARNAUD - J. BOUSSARD - A. POISSONNIER - H. SOUAL Computing additive contributions to growth and other issues for chain-linked quarterly aggregates
G2014/13	H. FRAISSE - F. KRAMARZ - C. PROST Labor Disputes and Job Flows

- G2014/14 P. GIVORD - C. GRISLAIN-LETRÉMY -
H. NAEGELE
How does fuel taxation impact new car
purchases? An evaluation using French
consumer-level dataset
- G2014/15 P. AUBERT - S. RABATÉ
Durée passée en carrière et durée de vie en
retraite : quel partage des gains d'espérance de
vie ?
- G2015/01 Aurélien POISSONNIER
The walking dead Euler equation
Addressing a challenge to monetary policy
models