

# Informations *Rapides*

30 septembre 2014 - n° 228



## ■ Turnover in industry and construction – July 2014

### In July 2014, the turnover in manufacturing industry dropped compared to June (–1.1%)

Every index in this issue is in value (excluding taxes), seasonally and working day adjusted. The commentary shows variations of subsections by decreasing contribution. The contribution of a subsection depends on the extent of the change and on its weight.

In July 2014, the turnover fell substantially in **manufacturing industry** (–1.1%) after a significant rise in June (+1.9%). Exports fell as well (–1.4%). The turnover went down in the **industry as a whole** (–1.4%).

#### Fall over the last three months (–0.7%)

Over the quarter (q-o-q), the turnover declined in the **manufacturing industry** (–0.7%) as in the **industry as a whole** (–0.7%).

The turnover declined in *other manufacturing* (–1.4%), mainly in the *manufacture of rubber and plastic products*, and *other non-metallic mineral products* (–2.6%) and in the *other manufacturing; repair and installation of machinery and equipment* (–1.9%). It also went down in the *manufacture of coke and refined petroleum products* (–2.5%) and in the *electrical and electronic equipment; machine equipment* (–1.1%). On the contrary, it rose in the *manufacture of transport equipment* (+1.7%) owed to a sharp growth in the *manufacture of other transport equipment* (+4.5%). It levelled off in the *manufacture of food products and beverages* (–0.1%).

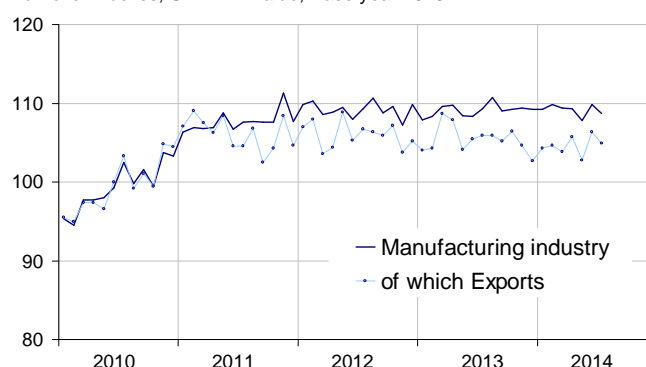
#### Stability over the last year

Year-on-year, the turnover remained stable in the **manufacturing industry** (+0.1%).

Over this period, the turnover grew sharply in the *manufacture of transport equipment* (+4.2%) and more moderately in the *manufacture of food products and beverages* (+0.8%). Conversely, it plummeted in the *manufacture of coke and refined petroleum products* (–4.6%) and fell in *other manufacturing* (–0.5%) and in the *electrical and electronic equipment; machine equipment* (–1.8%).

#### Turnover in manufacturing industry

Turnover indexes, SA-WDA value, Base year 2010



Source: INSEE

#### Variation of the turnover in industry and construction

SA-WDA value, Base year 2010

NA: A 10, (A 17)	Weight**	Change in %			
		July/ June	June/ May	q-o-q (1)	y-o-y (2)
<b>BE: INDUSTRY</b>	<b>10000</b>	<b>–1.4</b>	<b>1.7</b>	<b>–0.7</b>	<b>–0.4</b>
<b>CZ: MANUFACTURING</b>	<b>8373</b>	<b>–1.1</b>	<b>1.9</b>	<b>–0.7</b>	<b>0.1</b>
Of which Exports	2731	–1.4	3.5	–0.1	–0.4
(C1): Manufacture of food products and beverages	1647	–2.1	2.5	–0.1	0.8
(C2): Manufacture of coke and refined petroleum products	478	–3.3	–3.3	–2.5	–4.6
(C3): Electrical and electronic equipment; machine equipment	1005	1.0	1.3	–1.1	–1.8
(C4): Manufacture of transport equipment	1428	–3.4	4.1	1.7	4.2
(C5): Other manufacturing	3815	–0.2	1.8	–1.4	–0.5
DE: Mining and quarrying; energy; water supply; waste management	1627	–2.3	0.3	–0.7	–3.0
<b>FZ: CONSTRUCTION</b>	<b>10000</b>	<b>–1.5</b>	<b>1.9</b>	<b>0.8</b>	<b>2.2</b>

\*\* 10000=B...E and F

(1) Quarter-on-quarter: last three months / previous three months

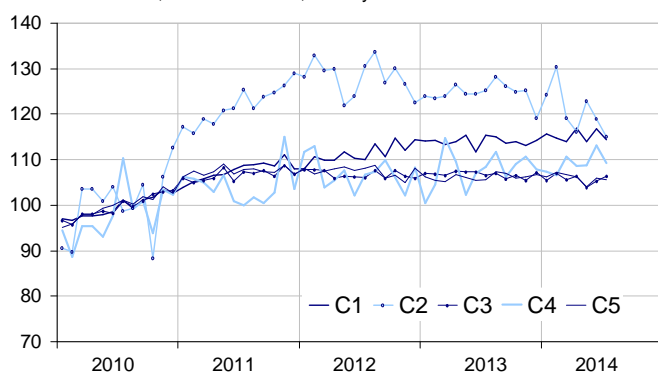
(2) Year-on-year: last three months / same three months of previous year

The codes correspond to different levels of aggregation of the NACE classification.

Source: INSEE

## Turnover in manufacturing industry by sector

Turnover indexes, SA-WDA value, Base year 2010



Source: INSEE

### In July 2014, the turnover slumped in transport equipment (–3.4%)

In July, the turnover dropped sharply in the *manufacture of transport equipment* (–3.4%), after a significant rise in June (+4.1%). It plummeted in the *manufacture of motor vehicles, trailers and semi-trailers* (–4.5%), and it went down substantially in the *manufacture of other transport equipment* (–2.9%). Exports plunged (–8.3%).

### Sharp fall in food and beverages (–2.1%)...

In July, the turnover dipped in the *manufacture of food products and beverages* (–2.1%) after a significant growth in June (+2.5%).

### ...and in coke and refined petroleum (–3.3%)

In July, the turnover declined considerably in the *manufacture of coke and refined petroleum products* (–3.3%, as in June).

### Slight decrease in other manufacturing (–0.2%)

In July, the turnover declined slightly in *other manufacturing* (–0.2%) after a rise in June (+1.8%). It went down mainly in the *manufacture of chemicals and chemical products* (–1.3%) and in the *manufacture of rubber and plastics products, and other non-metallic mineral products* (–1.2%), but it grew in the *manufacture of basic metals and fabricated metal products* (+1.0%) and in the *manufacture of basic pharmaceutical products and pharmaceutical preparations* (+1.6%).

### New rise in equipments (+1.0%)

The turnover went up in July in the *electrical and electronic equipment; machine equipment* (+1.0%, after +1.3% in June). It grew in the *manufacture of electrical equipment* (+3.2%) and the *manufacture of computer, electronic and optical products* (+1.3%). Conversely, it declined in the *manufacture of machinery and equipment n.e.c.* (–0.4%)

#### • No revision in the manufacturing industry

In the *manufacturing industry*, the change of the turnover in June is confirmed at +1.9%.

## Indexes of turnover in industry and construction

SA-WDA, based year 2010

Industries:	Weight*	July 2014	Change in %		
			July/June	June/May	q-o-q (1)
<b>BE: INDUSTRY</b>	<b>10000</b>	<b>108.0</b>	<b>–1.4</b>	<b>1.7</b>	<b>–0.7</b>
<b>CZ: MANUFACTURING</b>	<b>8373</b>	<b>108.7</b>	<b>–1.1</b>	<b>1.9</b>	<b>–0.7</b>
of which Exports	2731	104.9	–1.4	3.5	–0.1
<b>(C1): Man. of food products and beverages</b>	<b>1647</b>	<b>114.4</b>	<b>–2.1</b>	<b>2.5</b>	<b>–0.1</b>
of which Exports	284	118.3	–1.3	2.7	–2.7
<b>(C2): Man. of coke and refined petroleum products</b>	<b>478</b>	<b>115.0</b>	<b>–3.3</b>	<b>–3.3</b>	<b>–2.5</b>
<b>(C3): Electrical and electronic equipment; machine equipment</b>	<b>1005</b>	<b>106.4</b>	<b>1.0</b>	<b>1.3</b>	<b>–1.1</b>
of which Exports	483	105.9	1.8	2.8	–1.4
[CI] Man. of computer, electronic and optical products	269	99.2	1.3	0.3	–1.3
[CJ] Man. of electrical equipment	302	101.9	3.2	0.5	–3.1
[CK] Man. of machinery and equipment n.e.c.	434	114.0	–0.4	2.4	0.3
<b>(C4): Man. of transport equipment</b>	<b>1428</b>	<b>109.3</b>	<b>–3.4</b>	<b>4.1</b>	<b>1.7</b>
of which Exports	693	93.8	–8.3	7.9	4.1
[CL1] Man. of motor vehicles, trailers and semi-trailers	689	88.0	–4.5	2.7	–2.4
[CL2] Man. of other transport equipment	739	129.1	–2.9	5.1	4.5
<b>(C5): Other manufacturing</b>	<b>3815</b>	<b>105.7</b>	<b>–0.2</b>	<b>1.8</b>	<b>–1.4</b>
of which Exports	1213	106.8	0.8	2.1	–1.1
[CB] Man. of textiles, wearing apparel, leather and related products	191	109.7	–0.7	1.3	–0.6
[CC] Man. of wood and paper products; printing and reproduction of recorded media	427	102.0	0.5	1.2	–0.8
[CE] Man. of chemicals and chemical products	706	105.4	–1.3	2.1	–1.3
[CF] Man. of basic pharmaceutical products and pharmaceutical preparations	322	100.9	1.6	0.8	–0.5
[CG] Man. of rubber and plastics products, and other non-metallic mineral products	620	102.9	–1.2	3.3	–2.6
[CH] Man. of basic metals and fabricated metal products, except machinery and equipment	900	106.5	1.0	1.8	–0.9
[CM] Other manufacturing; repair and installation of machinery and equipment	649	111.4	–0.4	0.7	–1.9
<b>DE: Mining and quarrying; energy, water supply, sewerage, waste management</b>	<b>1627</b>	<b>104.7</b>	<b>–2.3</b>	<b>0.3</b>	<b>–0.7</b>
[BZ] Mining and quarrying	69	104.1	–1.0	1.3	–2.1
[DZ] Electricity, gas, steam and air-conditioning supply	1216	103.9	–3.4	–0.5	–1.6
[EZ] Water supply; sewerage, waste management and remediation	342	107.6	1.3	3.0	3.0
<b>FZ: CONSTRUCTION</b>	<b>10000</b>	<b>107.4</b>	<b>–1.5</b>	<b>1.9</b>	<b>0.8</b>

\*\* 10000=B...E and F

(1) Quarter-on-quarter: last three months / previous three months

Source: INSEE

### Measure of variations' revisions

(in point %)

	June/ May	May/ Apr.	Apr./ Mar.	Q2 2014/ Q1 2014	2013/ 2012
<b>Industry (BE)</b>	<b>0.10</b>	<b>0.00</b>	<b>0.00</b>	<b>0.00</b>	<b>0.00</b>
raw serie	0.50	0.00	0.00	0.15	0.00
SA-WDA coeff.	–0.40	0.00	0.00	–0.15	0.00
<b>Manufacturing industry (CZ)</b>	<b>0.00</b>	<b>0.00</b>	<b>–0.09</b>	<b>–0.09</b>	<b>0.00</b>
raw serie	0.00	0.00	0.00	0.00	0.00
SA-WDA coeff.	0.00	0.00	–0.09	–0.09	0.00

Foot note: in the manufacturing industry, the SA-WDA evolution between May and June 2014 is not revised (whether the raw series or the SA-WDA coefficients).

Source : INSEE

### For further information:

- Complementary data (long series) and metadata (methodology, linked internet pages, etc.) are available on the web page of this index: <http://www.insee.fr/fr/themes/info-rapide.asp?id=53>
- Historical data are available on the BDM: [G1444](#), [G1445](#), [G1446](#), [G1447](#), [G1448](#) and [G1529](#)
- Press contact: [bureau-de-presse@insee.fr](mailto:bureau-de-presse@insee.fr)
- Follow us on [Twitter](#) @InseeFr\_News

Next issue: October 24<sup>th</sup>, 2014