

ANNUAL REPORT

2021



Measuring, understanding

- P. 4 _ INSEE and Official Statistics
- P. 5 _ The Director-General's editorial
- P. 6 _ INSEE, providing you with population data for 75 years
- P. 8 _ 2021 in figures
- P. 10 _ Surveys conducted in 2021

P. 13 ON THE FRONT LINE OF DATA SOURCES

- P. 14 _ Census: INSEE adapts and enhances its data
- P. 16 _ Utilising private data
- P. 18 _ Examining administrative data in greater depth

P. 19 INTERPRETING THE FIGURES

- P. 20 _ Analysing the state of society
- P. 22 _ Supporting public decision-making
- P. 24 _ Exploring new fields of study

P. 25 REACHING OUT TO ALL AUDIENCES

- P. 26 _ Developing young people's statistical literacy and increasing teacher awareness
- P. 28 _ New ways of accessing information
- P. 30 _ Enabling accessibility of services and tools

P. 31 POOLING AND BUILDING SHARED STATISTICS

- P. 32 _ Promoting the exchange of national best practices
- P. 33 _ Actively contributing to European official statistics
- P. 35 _ International action

P. 37 INSEE'S RESOURCES AND ORGANISATION

- P. 38 _ INSEE's missions and budget
- P. 40 _ The women and men at INSEE
- P. 42 _ INSEE in the regions
- P. 44 _ Jobs and training at INSEE

INSEE AND OFFICIAL STATISTICS

INSEE collects, produces, analyses and disseminates information on the French economy and society to inform public debate and individual decision-making.

The National Institute for Statistics and Economic Studies (INSEE)

The *Institut national de la statistique et des études économiques* (French National Institute for Statistics and Economic Studies, INSEE) was created by the French Finance Law of 27 April 1946 (art. 32 and 33), taking over the official statistics activity that had been performed without interruption since 1833. Today, INSEE is a Directorate-General of the Ministry of the Economy, with offices across France, whose employees are state officials. INSEE is subject to public accounting regulations and its funds are part of the general State budget.

Working with complete professional independence

INSEE operates with complete professional independence. Created by the Law on the Modernisation of the Economy of 4 August 2008, the Official Statistics Authority monitors compliance with the principle of independence in "the design, production and dissemination of official statistics" (Law No. 51-711, art. 1). The *Conseil national de l'information statistique* (National Council for Statistical Information — CNIS) facilitates interactions between the producers and users of official statistics.

Contributing to European and international statistics

With Eurostat, the Statistical Office of the European Union (EU) and its EU counterparts, INSEE contributes to building the European



statistical system. It also plays a part in the statistical work of international bodies such as the United Nations (UN), the International Monetary Fund (IMF) and the Organisation for Economic Co-operation and Development (OECD).

Coordinating the Service Statistique Public

The *Service Statistique Public* (Official Statistical Service — SPP) is made up of INSEE and the *Services Statistiques Ministériels* (Ministerial Statistical Offices — MSOs), which carry out statistical operations in their areas of expertise (education, health, justice etc.). INSEE coordinates the Service's operations and decides with the MSOs on the methods, rules and procedures for compiling and publishing statistics.



**JEAN-LUC
TAVERNIER**
DIRECTOR-GENERAL
OF INSEE

Despite the challenging circumstances surrounding the Covid-19 pandemic, INSEE took action in 2021 to continue its missions by regularly adapting its sources, methods, tools and outputs.

This annual report illustrates INSEE's ability to innovate and adapt. It reports on the way the institute has, as in 2020, produced almost all of the planned statistics work, managed its directories and registers without interruption and conducted one-off operations to report on France's demographic, economic and social situation during the pandemic. The European peers also applauded the *Service Statistique Public* in their July audit report for its responsiveness during the crisis. They also presented a very positive assessment of compliance with the principles of the European Statistics Code of Practice.

Despite the suspension of the annual census survey, the institute was able to issue information on the legal populations of the municipalities at the end of 2021. It has regularly highlighted the changes in demographics resulting from deaths, by quantifying excess mortality, and from births, which dipped in number nine months after the first lockdown. Throughout the year, it maintained a high-frequency analysis of the economic outlook by making its collaboration with the *Groupement des Cartes Bancaires* permanent.

Since the start of 2020, it has been more important than ever to report on the diversity of the situations facing households and companies, beyond the large macroeconomic aggregates. As such, INSEE made use of several innovations in 2021 like the joint work with the *Banque de France* on companies and the unprecedented partnership with banking institutions, adjustments to recurring surveys (*Statistiques sur les ressources et conditions de vie*) and the launch of new surveys on the distribution of food aid.

As you read, you will find that 2021 featured several other achievements, including structural projects for the future of the institute that either came to a successful conclusion or reached key milestones. To speak to the broadest possible audience and keep pace with new means of accessing information, INSEE has continued to adapt the ways it disseminates information, launching its INSEE mobile application and holding an exhibition in partnership with the SNCF (the French national railway company) for its 75th anniversary.

That's right, INSEE has been providing you with population data for over 75 years! We celebrated this anniversary in 2021 and, going forward, I hope that the institute will continue to be as energetic and adaptable as ever in its projects and rise to the challenges ahead in 2022.

INSEE, PROVIDING YOU WITH POPULATION DATA FOR 75 YEARS

“For 75 years, INSEE has evolved and strengthened its position so as to consistently meet society’s expectations and provide reliable, impartial insight into economic and social realities. It is the institute’s collective aspiration that contributes to its strength and reputation, both today and in the years ahead.”

JEAN-LUC TAVERNIER
INSEE DIRECTOR-GENERAL



An exhibition taking place in 26 stations

For its 75th anniversary, INSEE decided to offer a visual learning experience through data on French society past and present: from 22 October to mid-December, in partnership with SNCF Gares & Connexions, the institute held its exhibition “1946–2021, 75 years of bringing statistics to life” in 26 stations throughout France (excluding Corsica).

“INSEE’s data on the developments in French society, sometimes dating from the post-war

period to the present day, have been presented graphically around objects symbolising daily life”, explained Nicole Cadelnel, who was the INSEE representative responsible for overseeing this endeavour. Each exhibition was custom-designed for each of the 26 partner stations: “The informative and original content offers a broad overview of our nation and also highlights region-specific economic, social or societal aspects, such as the most common first names or quality of life in the region”.

The staging for the exhibition “75 ans de statistiques vivantes” (75 years of bringing statistics to life) was custom-designed in each station. Here are the stations in Avignon (outdoor photo) and Paris-Montparnasse.

A data journalism competition with the CFJ and *Les Décodeurs* in *Le Monde*

For its 75th anniversary, INSEE held a data journalism competition with the Centre de formation des journalistes (French journalism school — CFJ) and the *Les Décodeurs* [The Decoders] section of French national newspaper *Le Monde*. Several teams of CFJ students and young graduates worked for the entire month of November 2021 to create a data project on the theme of: "Inequalities in France, beyond the obvious". After several weeks of work, interspersed with conferences and workshops led by the *Décodeurs* teams, the panel, made up of members from the three partner organisations, met to decide the winning team. The winning trio, Arthur Bamas, Louis Pasquier-Avis and Théo Uhart, created a project on young French people who are connected yet victims of digital exclusion. They received an award from INSEE and their article was published in the *Les Décodeurs* section of *Le Monde* in January 2022.



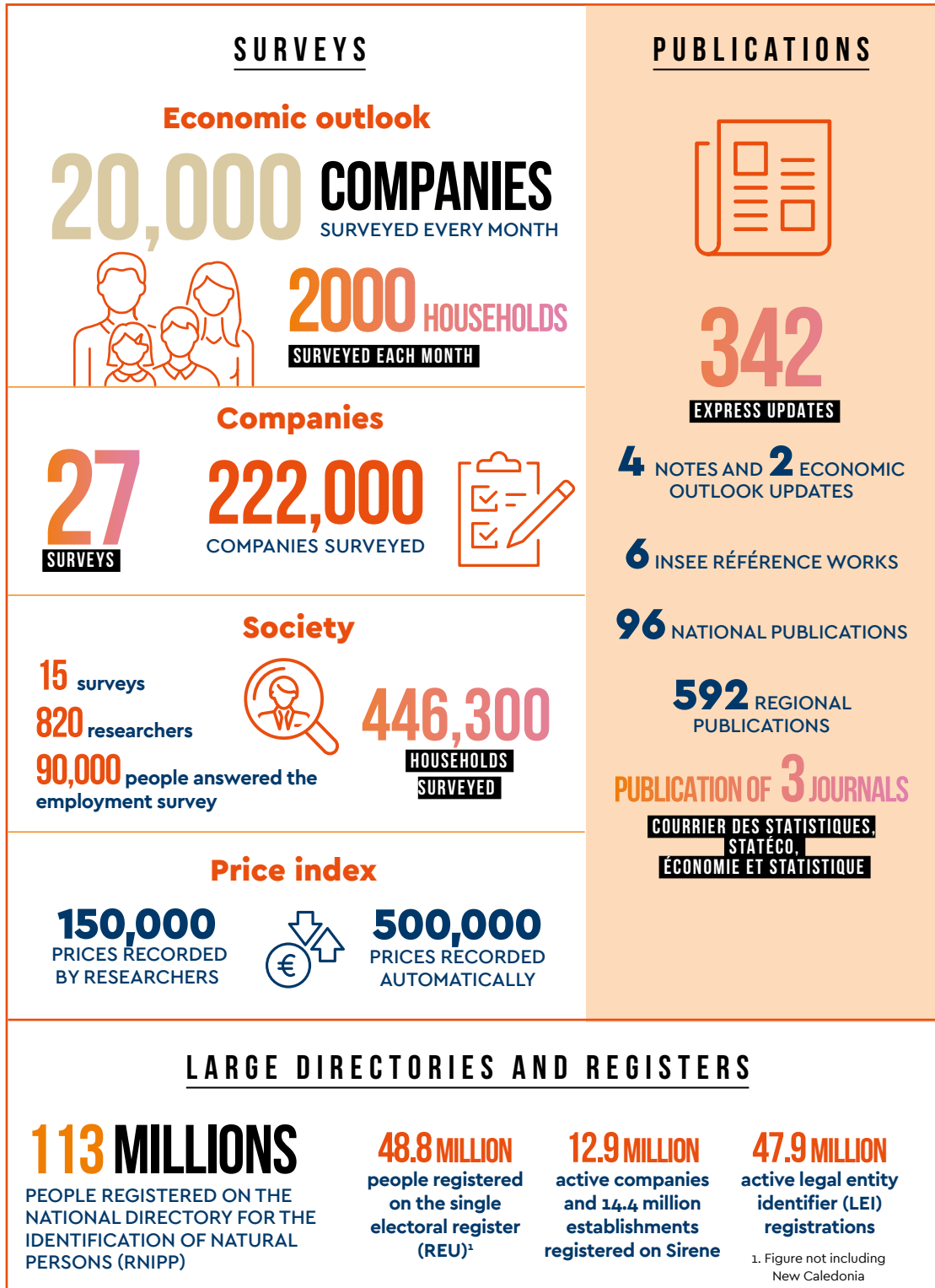
At the festival's book fair, INSEE officers answered questions from teachers, students and local players who attended in great numbers.



Launch of the partnership with *Les Rendez-vous de l'histoire*

In 2021, INSEE formed a partnership with the festival "*Les Rendez-vous de l'histoire*" in the town of Blois in central France. The institute's Director-General, Jean-Luc Tavernier, took part in a series of meetings called "The economy at *Les Rendez-vous de l'histoire*". This included a conversation with media economist Nathalie Sonnac at a round-table event moderated by journalist Christian Chavagneux on the topic "Google, Apple, Facebook and Amazon... do they know more about the French than INSEE?". At the same time, at the festival's book fair, INSEE's Alain-Desrosières library presented the institute's latest publications, as well as a selection of old books about work, the festival's theme for the year. It also organised an educational workshop and conference aimed at teachers (see p. 27).

2021 IN FIGURES



USER COMMUNICATION AND SERVICE

Digital tools



INTERNET
Website

45 MILLION visits

Blog

22 articles published in 2021

123,000 visitors



SOCIAL MEDIA
Twitter

83,000 FOLLOWERS
of @InseeFr

6 regional handles, 2 of which
created in 2021:
@InseePdL and @InseeOccitanie

LinkedIn

31,000 LinkedIn subscribers



INSEE MOBILE APP

53,000 downloads

Media

54,350

PRESS MENTIONS AND QUOTES ACROSS ALL MEDIA



User support

50,000 REQUESTS RECEIVED BY EMAIL



334,000

TELEPHONE CALLS RECEIVED

INTERNATIONAL RELATIONS

PARTICIPATION IN



152 INTERNATIONAL
GROUPS

4/5 OF WHICH ARE EUROPEAN



106 INTERNATIONAL
COOPERATIVE EFFORTS

SURVEYS CONDUCTED IN 2021

Business surveys



Productive system

Annual sectoral survey, ESA (*Enquête sectorielle annuelle*)

Annual production survey, EAP (*Enquête annuelle de production*)

Annual survey of Mayotte companies, ESEM (*Enquête annuelle sur les entreprises mahoraises*)

Survey on observation of prices in industry and services, OPISE (*Enquête Observation des prix de l'industrie et des services*)

European survey on activities of subsidiaries under national control implanted in foreign countries, OFATS (*Enquête européenne sur l'activité des filiales étrangères des groupes français*)

Monthly survey on large-scale food retail activities, EMAGSA (*Enquête mensuelle sur l'activité des grandes surfaces alimentaires*)

Global value chains survey, CAM (*Enquête sur les chaînes d'activité mondiales*)

New enterprises information system survey, SINE and MICRO (*Enquête Système d'information sur les nouvelles entreprises nouvelles entreprises*)



Tourism

Collective tourist accommodation occupancy survey (*Enquête de fréquentation dans les hébergements collectifs de tourisme*)



Industry

Monthly branch survey, EMB (*Enquête mensuelle de branche*)

Survey of the aerospace and space sector, FAS (*Enquête sur la filière aéronautique et spatiale*)

Survey on the impact of space activities in French Guiana, IAS (*Enquête Impact des activités spatiales en Guyane*)



Environment and sustainable development

Annual survey on industrial energy consumption, EACEI (*Enquête sur les consommations d'énergie dans l'industrie*)

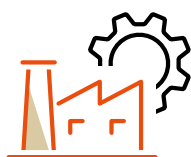
Survey on environmental protection studies and investments, Antipol (*Enquête sur les investissements dans l'industrie pour protéger l'environnement*)

Waste, industry and services survey (*Enquête Déchets dans le commerce, l'industrie, les services*)



Financial system and financing the economy

Annual financial lease survey (*Enquête annuelle crédit-bail*)



Companies and market strategies, outlook

Monthly outlook survey of industry (*Enquête mensuelle de conjoncture dans l'industrie*)

Monthly outlook survey of the building industry (*Enquête mensuelle de conjoncture dans l'industrie du bâtiment*)

Monthly outlook survey of services (*Enquête mensuelle de conjoncture dans les services*)

Monthly outlook survey of the retail trade and the trade and repair of motor vehicles (*Enquête mensuelle de conjoncture dans le commerce de détail, et le commerce et la réparation automobiles*)

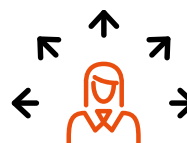
Bi-monthly business outlook survey of wholesaling (*Enquête bimestrielle de conjoncture dans le commerce de gros*)

Quarterly outlook survey of the building trades (*Enquête trimestrielle de conjoncture dans l'artisanat du bâtiment*)

Monthly business outlook survey of real estate development (*Enquête mensuelle de conjoncture dans la promotion immobilière*)

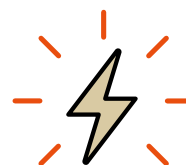
Quarterly outlook survey of public works (*Enquête trimestrielle de conjoncture dans les travaux publics*)

Quarterly business outlook survey of investment in industry (*Enquête trimestrielle de conjoncture sur les investissements dans l'industrie*)



Employment, professional integration, salaries

Labour cost and structure of earnings survey, ECMOSS (*Enquête sur le coût de la main-d'œuvre et la structure des salaires*)



Innovation

Capacity to Innovate and Strategy survey, CIS (*Enquête Capacité à innover et stratégie*)

Annual survey of Information and Communication Technologies (ICTs) in companies (*Enquête annuelle sur les technologies de l'information et de la communication (TIC) dans les entreprises*)

Other surveys



Price, purchasing power

Consumer Price Index (CPI)

Household or private individual surveys



Living conditions

Annual Living Conditions and Security Survey, CVS (*Enquête annuelle cadre de vie et sécurité*)

Monthly consumer confidence survey
(*Enquête de conjoncture auprès des ménages mensuelle*)

Survey of Trajectories and Origins, TeO2
(*Enquête Trajectoires et origines*)

Migration-Family and Ageing Survey, MFV
(*Enquête Migrations, famille et vieillissement*)
– Overseas departments excluding Mayotte

Food Aid Users Survey (*Enquête auprès des personnes fréquentant les lieux de distribution d'aide alimentaire*)

Annual Household Survey on Information and Communication Technologies (ICT)
(*Enquête annuelle sur les technologies de l'information et de la communication (TIC)*)

Everyday Life and Health Survey, VQS
(*Enquête Vie quotidienne et santé*)



Housing

Quarterly survey on rents and charges
(*Enquête trimestrielle sur les loyers et les charges*)



Resources

Annual Statistics on Income and Living Conditions Survey, (SRCV *Enquête annuelle Statistiques sur les ressources et conditions de vie*)

Life History and Wealth Survey, HVP
(*Enquête Histoire de vie et patrimoine*)



Employment, qualifications, professional integration, salaries

Employment Survey (*Enquête sur l'emploi*)

Annual Employment Survey – Mayotte
(*Enquête annuelle sur l'emploi – Mayotte*)

Annual Survey On Entry Into Adult Life, EVA
(*Enquête annuelle sur l'entrée dans la vie adulte*)

International Statistical Survey of Adults' Skills, PIAAC (*Enquête statistique internationale sur les compétences des adultes*)

Survey on Mayotte companies (*Enquête sur les entreprises mahoraises informelles*)



ON THE FRONT LINE OF DATA SOURCES

CENSUS: INSEE ADAPTS AND ENHANCES ITS DATA

The health situation led the institute to postpone the annual census survey planned for January 2021 to 2022. INSEE used this unusual situation to reflect and carry out tests to prepare for the future.

Counting without a census survey in 2021

The population census data was supposed to be collected on the ground from 21 January 2021. However, it was

postponed because the health situation made it impossible to prepare properly for collection as census officers were prevented from moving around and getting in touch with residents. Nonetheless, as it does every year, INSEE published the population information for France and all of its municipalities at the end of 2021. It achieved this by making more extensive use of the methods it already employs for the purpose of its usual annual surveys. In fact, each year, the legal population updates are already calculated using a combination of several sources, including administrative sources in municipalities with fewer than 10,000 inhabitants or the *répertoire d'immeubles localisés* (Identified Buildings Index, RIL) in municipalities with over 10,000 inhabitants. For 2021, these administrative data were relied upon to a much greater extent and the calculation methods were adapted. Prior methodological work had shown that the estimates obtained would be reliable. That said, the data produced can only be relied upon when a single collection year is missing.

The absence of a census survey led INSEE to carry out exceptional operations to improve the quality of the RIL, aimed at municipalities with the most significant gaps in fiscal data. As a result of this work, the index has now been updated.



What kind of census will take place in 2022 and subsequent years?

The population census is organised differently depending on the size of the municipality: in all cities with over 10,000 inhabitants, the census is carried out each year on a sample of 8% of households. These towns will continue to be counted every year in the same way. Small municipalities are counted in their entirety in rotation every five years. In the absence of a 2021 survey, INSEE adapted its system by delaying its census data collection by one year for all municipalities with under 10,000 inhabitants. As such, the municipalities that should have had their census survey in 2021 will have it in 2022; those that should have had it in 2022 will have it in 2023 etc.

The pursuit of improvement and innovation

The postponement of the 2021 annual census survey has allowed INSEE's census teams to carry out varied and innovative

investment work, both at regional level, in helping towards the national count in the Auvergne-Rhône-Alpes regional division, and within project management at head office.

In 2021, working groups explored various avenues, such as optimising the controls during and after data collection, adjusting the protocol in very small municipalities, modernising the training system and even promoting the option to delegate data collection to inter-municipal structures. Certain conclusions drawn by these groups have already been trialled or applied to the 2022 survey, such as telephone controlled- collection and newly designed training videos.

Two operations have involved experimenting with new automatic population census data coding methods. The first of these entailed coding the respondent's profession in preparation for implementing the revised classification of professions and socio-professional categories (PCS 2020). The second was an attempt to improve the coding of the employing establishment. This research used innovative methods such as machine learning trialled by INSEE's SSP Lab, a resource centre for facilitating applied research and for experimental development of new data sources.



The census on Mayotte

Despite a standstill of over one month due to the lockdown, the 2021 data collection was able to go ahead between 4 February and 13 April in 9130 households and 11 municipalities in Mayotte, using the same census system as the rest of the territory for the first time. Until 2020, Mayotte was the only French region and department to organise a comprehensive census once every five years. A large-scale media communication campaign specific to the territory was rolled out to ensure that the people of Mayotte took part in this new population census format; posters, TV and radio spots were released on the island and translated into Shimaore, the majority language of Mayotte. This exciting challenge was a great success thanks mainly to INSEE's local actors and the municipalities involved.

A new distance calculator

By geolocating the places of residence and work gathered during the population census, INSEE can analyse the data on commuting to and from work and carry out national or regional studies on socio-economic and environmental issues. As of 2021, these analyses are more accurate thanks to a new journey distance and time calculator: METRIC (MEsure des TRajets Inter-Communes/Carreaux) – OSRM (Open Source Routing Machine). From now on, INSEE will use the OSRM open-source routing server to implement powerful routing algorithms on road funds from the OpenStreetMap collaborative database. This server can be used to rapidly calculate optimal journey distances and times by car at quiet times from point A to B across the entire territory and no longer just between administrative centres.

UTILISING PRIVATE DATA

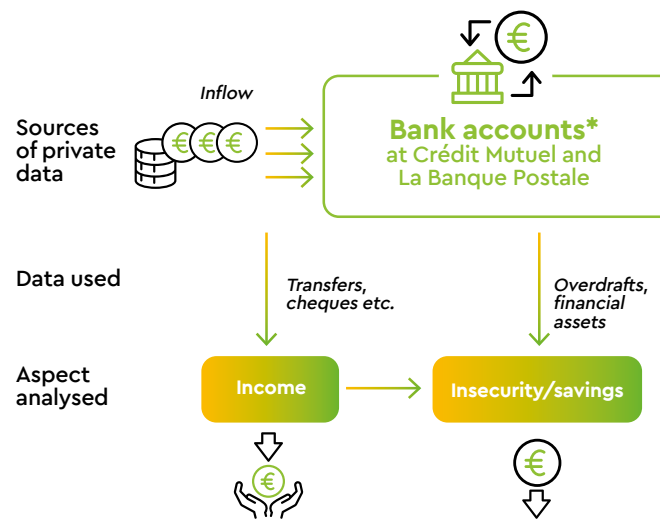
To report on changes in the main economic aggregates as quickly as possible, INSEE is transforming its tools by exploiting a number of high-frequency data and leveraging original sources.

Examining financial insecurity through banking data

Banking data have the twofold advantage of being able to be used before tax data are available and of recording monthly changes in income, consumption and even wealth. They also contain specific information on banking difficulties, such as overdrawn customers. In order to shed some light on the diversity of financial situations in 2020, the Economic Outlook for March 2021 thus presented an analysis of the movements in the current accounts of Crédit Mutuel customers. Banking data from La Banque Postale was then used to explore the results of this analysis in more depth by focusing more specifically on low incomes. Naturally, the analyses carried out as part of these studies were performed on strictly anonymous data and only on the banking partners' secure information systems or systems validated by them.

These personal data that INSEE collects or holds for statistical processing are subject to strict rules and measures to ensure they are kept secure and confidential. Everyone who has access to the data collected (survey interviewers, census officers, statisticians and authorised researchers) are bound by statistical confidentiality.

Use of



EXTERNAL PERSPECTIVE



PHILIPPE AURAIN
DIRECTOR OF ECONOMIC STUDIES AT LA BANQUE POSTALE

What inspired La Banque Postale to work with INSEE on the impact of the crisis on the least wealthy?

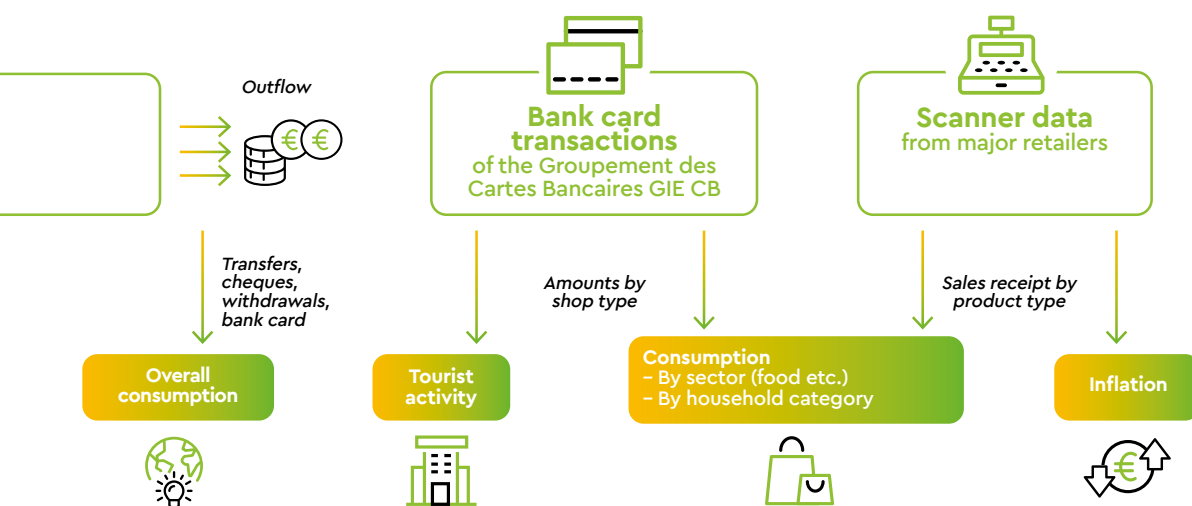
La Banque Postale, a socially responsible bank, is firmly committed to improving collective well-being. With

Utilising retail data and bank card transaction data

Other data, such as retail sales data and aggregate bank card transaction amounts, have continued to be used extensively: they can be used to take advantage of the digitisation of the economy while also charting as closely as possible the purchases of goods and services, which

are an integral part of household consumption that is then charted using the national accounts. It is not a question of creating an information system per se, but rather of expanding the range of tools and data that enrich the economic analysis and the real-time estimation (nowcasting) of economic activity.

private data in 2021



* bank account data were utilised in 2021 to provide short-term insight in addition to the information provided by other sources

this in mind, from 2020, it decided to begin forging partnerships with public sector bodies. It has provided them with anonymous banking data samples, allowing them to carry out statistical studies on their customers' behaviour and circumstances, in particular those who are prone to financial insecurity. These studies aim to better understand the effect of public policies on those with bank accounts and, where appropriate, to give public authorities food for thought as well as effective measurement

tools. Backed by its unique expertise and its ability to carry out its study missions to benefit the common good, INSEE was an ideal partner. Its experts were able to obtain results in record time and produce initial data on the effect of the crisis on disadvantaged customers.

What are the conclusions of this study?

I would invite readers to take a look at it! On average, it shows a minimal impact on the income of the customers in the sample and, in the light of

the three insecurity indicators chosen, no worsening of financial insecurity among these customers. However, low-income customers experienced a slightly greater impact on their income. More specifically, those claiming income support (RSA) saw their situation deteriorate due to the poor return-to-work conditions.

EXAMINING ADMINISTRATIVE DATA IN GREATER DEPTH

To enhance its statistics, INSEE is increasingly innovating and exploiting administrative data gained from public service management processes.

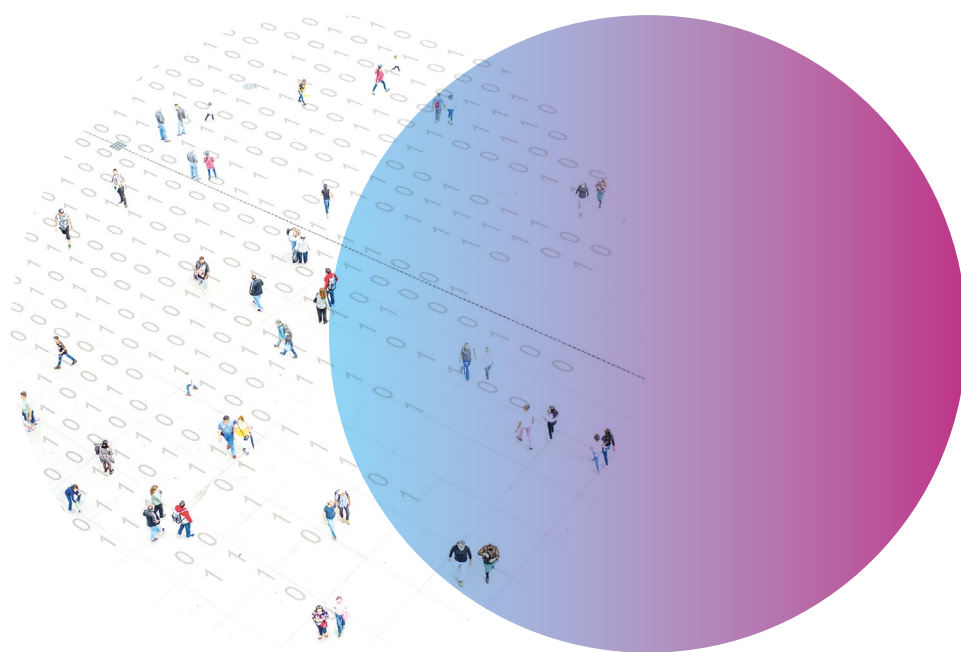
In 2021, INSEE built a comprehensive new database on households' property assets. Its aim was to shed light on a trend that is still very under-documented: multiple property ownership and its concentration. "To create this new database, we drew on data from tax-related housing and individual demographic files (Fidéli), land registry data and data from the trade and companies register", explained Olivier Meslin and Mathias André, both researchers at the institute. "We now know that a quarter of households have several properties, that these multiple-property owner households have two-thirds of the properties owned by private individuals and that 3.5% of households own half of the properties for rent. There will be many uses for this database." Watch this space.

INSEE has also developed uses for the Déclaration sociale nominative (Nominative Social Declaration, DSN), compiled by all employers for all of their employees. In 2021, this source was used, for example, to monitor the impact of the health crisis on the number of paid hours, short-time working and sick leave. This monitoring takes place each month, for each sector of activity.

Depending on the management processes, administrative data may vary or even disappear, according to changes in regulations. This is the case for the residence tax, which was, until now, a key fiscal data source for several statistical operations: building samples of the households surveyed; establishing highly localised income statistics; and for part of the population census processes. As such, to compensate for the gradual abolition of this tax, in 2021 the institute continued to invest with the aim of ensuring the continuity of its output and started a project to build statistical directories of individuals and housing.



Within the framework established by the French Law for a Digital Republic (*loi pour une république numérique*) of 2016, INSEE is responsible for implementing a code to enhance anonymity in files containing individual identifying data, the Non-Identifying Statistical Code (*code statistique non significatif*, CSNS) – unlike the National Registration Number (*numéro d'inscription au répertoire*, NIR), the elements of which are significant (gender, year of birth etc.). This code is reserved for statisticians of the *Service Statistique Public* and will be used to develop matches between administrative sources or between surveys and administrative sources. Established using the NIR by "hashing" then encryption with a secret key, it can now also be generated using civil register data.



INTERPRETING THE FIGURES

ANALYSING THE STATE OF SOCIETY

For 75 years, and more so for the past two years, INSEE has been reporting on the country's economic and social situation to tight deadlines, maintaining a high level of quality in the data and studies produced.

Monitoring changes in the crisis and its consequences

From the beginning of the health crisis, INSEE provided and regularly updated numerous indicators used to closely monitor the number of deaths or changes in the economic situation in real time.

Disseminating key information more regularly

Each month from February 2021, the provisional data on the number of births, by department and region, have been published online with commentary on the website, to shed light on how they have changed during the Covid-19 pandemic. As in 2020, INSEE

has continued to publish the number of daily deaths at similar intervals and has adapted the frequency according to the intensity of the epidemic. Prior to the crisis, these data were only available monthly and a single national level was given. In addition, INSEE has continued to monitor tourist activity in France each month on its website. It began releasing this information in 2020 to keep track of how the crisis was affecting tourism.

With regard to the Department of Short-Term Economic Analysis, "in 2021, it increased the rate of publication compared to the previous quarter", explained Aliette Cheptitski, head of the Outlook Summary. "Our six economic outlook notes and reports continued to explain the effect of health determinants and support measures on the French economy. In conjunction with the relaunch of our standard tools following a period of suspension, we have continued to develop the innovative tools implemented in 2020, such as the use of 'high-frequency' data."

35

SINCE JUNE 2021, THIS HAS BEEN THE PUBLICATION DEADLINE IN DAYS FOR THE INDUSTRIAL PRODUCTION INDEX (IPI), COMPARED TO 40 DAYS PREVIOUSLY.

"This improvement comes in response to a slew of requests from economic actors to make the infra-annual indicators available more quickly. It may be continued for the IPI or other indicators."

PIERRE LEBLANC

HEAD OF THE SHORT-TERM BUSINESS INDICATORS DIVISION

Utilising the results of the EpiCov survey

The *Epidémiologie et Conditions de vie liées au Covid-19* survey was led in 2020 by the *Direction de la Recherche, des Études, de l'Évaluation et des Statistiques* (Directorate of Research, Studies, Evaluation and Statistics, DREES) with the support of INSEE and *Santé Publique France* (the French Health Authority) to measure the dynamics of the spread of the Covid-19 epidemic and its effect on the population's living conditions. In 2021, the survey was used in several regions: the West Indies-French Guiana division produced two studies on the deterioration of the financial situation of the people of Martinique and Guadeloupe stemming from the first lockdown; the Grand Est regional division produced two publications providing forecasts of the difficulties faced by business sectors and households' financial struggles.



Adapting the surveys to an ever-changing context

As it did with the monthly consumer confidence survey in 2020, INSEE continued to adapt its recurring surveys in 2021 in order to account for the new economic, social and demographic realities brought about by the pandemic. As a result, the *Statistiques sur les ressources et conditions de vie* survey (SRCV) was enhanced, notably with the addition of questions related to the health crisis and its effect on income, reliance on state aid, remote working and home schooling conditions during the first lockdown. The data collection method was also adapted in that the survey, which would normally be carried out face to face, was conducted by telephone instead.

INSEE has also made changes to its surveys to address other issues. The Employment survey, for instance, conducted quarterly with 90,000 people, was overhauled in response to both the application of the new Integrated European Social Statistics Framework Regulation and a desire for national-level innovation. The survey's data collection protocol has been modernised by offering online responses as an additional option for reinterviewing, and additional topics such as remote working, new forms of employment and non-formal training for professional purposes have also been introduced. This new version, which is also the first household survey to implement the updated classification of professions and socio-professional categories, was field-tested for the first time in the first quarter of 2021.

Examining reliance on food aid throughout France

In 2021, INSEE and DREES, in collaboration with the voluntary sector and the *Union nationale des centres communaux et intercommunaux d'action sociale* (the National Union of Community and Intercommunity Centres for Social Action), implemented an innovative three-stage food aid monitoring system in France.

THE THREE FOOD AID MONITORING STAGES

1 SINCE EARLY 2021

Quantitative food aid data transfers, sent by the main networks¹ on a quarterly basis and by department. These data have sped up the process of publishing information on changes in the number of beneficiaries and volume distributed, as well as regional differences.

2 MAY 2021

Online survey on the activity of food aid distribution sites as well as municipal and inter-municipal social action centres, to deepen knowledge on the profiles of the communities receiving aid and assess local differences at the greatest level of detail.

3 NOV-DEC. 2021

Field survey of 4500 people visiting 300 food aid distribution centres, designed and conducted by INSEE. The first results came in at the end of June 2022.

1. The *Fédération française des banques alimentaires* (French Food Bank Federation), Restos du Cœur, Secours Populaire, the French Red Cross and the *Association nationale de développement des épiceries solidaires* (National Association for the Development of Community Grocery Stores).

SUPPORTING PUBLIC DECISION- MAKING

In 2021, the institute responded to the recent requests for information by national and local public actors on the effects of the crisis.

Informing national actors about the consequences of the crisis

In 2021, in collaboration with Banque de France, INSEE carried out two innovative studies on the consequences of the crisis

on companies, including their level of economic activity and their financial position. Both studies used a microsimulation model based on an unprecedented sample of 645,000 companies. This work contributed to enhancing the analysis by the "Comité de suivi et d'évaluation des mesures de soutien financier aux entreprises confrontées à l'épidémie de Covid-19" (Committee on the Monitoring and Evaluation of Financial Support Measures for Companies Dealing with the Covid-19 Epidemic), which sent its report to Prime Minister Jean Castex in July 2021. INSEE also co-organised a symposium on 25 and 26 November with Banque de France and the *Association de comptabilité nationale* (ACN) on companies and the national accounts during and after the crisis.

In order to examine the extent to which some regions have been affected more specifically than others by the effects of the health crisis, in January 2021 the Prime Minister tasked representative Jean-Noël Barrot with investigating how regional economies were recovering. Several regional divisions have taken an active part in the research, notably in Île-de-France with the DRIEETS (*Direction régionale et interdépartementale de l'économie, de l'emploi, du travail et des solidarités* — Regional and Interdepartmental Division for the Economy, Employment, Labour and Solidarity) and in Pays de la Loire, where a summary note aimed at regions requiring business recovery support was sent to the Prefect as part of the Minister Delegate's assignment.



In November 2021, INSEE showed that, according to the microsimulation-based advanced estimate method, standard-of-living inequalities and the income poverty rate stagnated in 2020 for ordinary non-student households. This stability can be explained by the exceptional measures put in place to combat the effects of the crisis, such as compensation for short-time working and aid for the self-employed and low-income households. In addition to this work and in order to gain a broader perspective on issues of financial insecurity, original data has also been used (see pp. 16–17), along with non-monetary indicators based on living conditions and deprivation or on difficulties experienced, which were published in early 2022.

Providing regional diagnostics to fight poverty

INSEE also provides local support to tackle financial insecurity: in Normandy, the Commissioner for the fight against poverty asked the regional division (RD) of INSEE to perform a diagnostic of poverty-related issues across the region in order to engage local stakeholders more effectively. This work culminated in two publications that formed the basis for a regional conference on poverty. In Corsica, the RD worked in conjunction with the Prefecture and Corsican authorities to publish the study “*Pauvreté et impacts de la crise Covid dans les intercommunalités de Corse*”.

Informing decision-making in land use planning

The work of INSEE's RDs supplements local policies on land use planning and the environment. In Brittany, for example, the Planning and Mobility Committee of the Regional Council invited INSEE to present its research on the new definition of rural space: the Region decided to use this definition from now on as one of the management criteria of the European Agricultural Fund for Rural Development (EAFRD).

INSEE in the regions works with the regional environmental, planning and housing divisions: in Centre-Val-de-Loire, the institute has co-organised a webinar with the *Direction régionale de l'Environnement, de l'Aménagement et du Logement* (Regional Directorate for the Environment, Development and Housing — DREAL) to present its recent research on the priority neighbourhoods of the city's policy and the work of the *Données sociales urbaines* (Urban Social Data) division. The Réunion-Mayotte inter-regional division, meanwhile, partnered with DEAL (*Direction de l'Environnement, de l'Aménagement et du Logement* — Directorate for the Environment, Development and Housing) to produce a diagnostic assessment of the progress in sustainable development in Réunion over the past 20 years.

The INSEE fact-finding and advisory task force for local decision-makers also results in the design of data resources. The Nouvelle-Aquitaine RD has thus created a series of 12 publications aimed at departmental councils, entitled *Les départements à grands traits*. These documents present the main socio-demographic and economic characteristics of the regions based on the census data.

EXTERNAL PERSPECTIVE



ANNE POSTIC
COMMISSIONER FOR
THE PREVENTION
AND FIGHT AGAINST
POVERTY – PAYS DE
LA LOIRE REGIONAL
PREFECTURE

What are the benefits for you of working with INSEE?

With regard to the fight against poverty, we work very closely with the INSEE regional division (RD), which published studies in 2021 covering various facets of hardship in the region. These studies are remarkable as they were carried out both at the regional and departmental level, thereby providing detailed data that reflects the realities on the ground. This collaboration allows us to further investigate our issues and develop a better understanding of the people of Pays de La Loire, particularly those who have been somewhat overlooked, such as single-parent families and the working poor. The INSEE RD is currently working on updating the data by department for people aged 16 to 25 who are neither studying, nor in employment, nor in training.

More specifically, what made INSEE's research possible?

The data provided by the study on the impact of couple separation on entering poverty led us to reach out to single-parent families. To provide them with better support, we are ensuring that greater attention is paid to what they have to say: meetings have already been arranged with the Fédération des centres sociaux (Federation of Social Centres) and the Caisse d'Allocations Familiales (Family Benefit Office, CAF); other participatory initiatives are under way. The study on professional integration pathways for young people produced during the first year of the pandemic has contributed to the work of the Regional Lab on the reform of the training obligation, which requires public authorities to find a solution for each young person aged 16 to 18.

EXPLORING NEW FIELDS OF STUDY

2021 has demonstrated that INSEE is more attentive than ever to emerging economic, social and demographic changes.

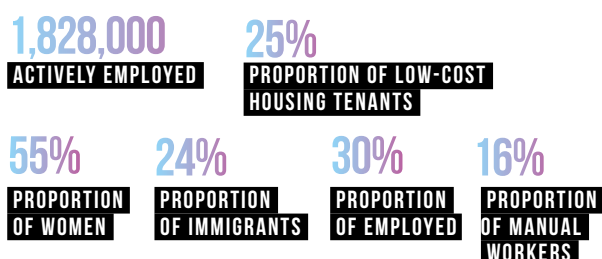
Aerospace

In December, the institute released an unprecedented study on the aerospace sector in France. It was based on a survey usually reserved for France's Great South-West regions, but has been significantly expanded to include the whole of the country (apart from French Guiana). "The health crisis led to the collapse of air traffic and a strong downturn in the aerospace economy. It was crucial to have a clear picture of the sector in order to measure the consequences for companies", explained Lionel Doisneau, head of the Economy division of the Occitanie RD. The RD utilised its local experience to fully engage in launching this survey. The survey was rolled out in record time over eight months. It was used to measure the unprecedented scale of the crisis and the contrasting outlook for recovery in France and in eight regions."

Everyday essential workers

The Covid-19 pandemic has highlighted the essential role that certain workers play in meeting the population's vital daily needs. Joint work by INSEE, the Atelier parisien d'urbanisme (Apur), the Institut Paris Région and the Observatoire régional de santé (ORS) Île-de-France (Île-de-France Regional Health Observatory) made it possible to define these "key workers", as well as "key worker relay" jobs and "everyday public services" jobs. Two studies were published in July 2021 on these workers. One describes their profiles as well as their working and living conditions; the other,

Everyday essential workers



the geography of their places of residence and employment. Ten regions then reproduced the study across their territories.

Expanded redistribution

In 2021, the institute presented a novel measurement of the reduction of standard-of-living inequalities through expanded redistribution based on the work of an expert report. This approach supplements the more common method of redistribution based on direct monetary transfers (social benefits and monetary allowances, direct taxes and social security contributions). It includes indirect contributions such as taxes on production and taxes on products as well as a monetary valuation of public services in kind (education, health etc.) and collective services (police, justice, research etc.). It shows that the reduction in inequalities linked to redistribution doubles when public services are included.

SIX "INSEE RÉFÉRENCES" PUBLICATIONS IN 2021

Aimed at the general public, the "Insee Références" collection offers a periodic overview of the key economic and social issues.

FRANCE AND ITS REGIONS (APRIL 2021)

New in 2021, the research analysed themes related to sustainable development at the departmental level.

HOUSEHOLD INCOME AND WEALTH (MAY 2021)

N.B.: For the first time, it shows a measurement of extreme poverty and the reduction of standard-of-living inequalities via expanded redistribution.

EMPLOYMENT, UNEMPLOYMENT, EARNED INCOME (JUNE 2021)

Produced with the *Direction de l'animation de la*

recherche, des études et des statistiques (DARES — Directorate of Research, Economic Studies and Statistics), the 2021 edition placed particular emphasis on the impact of the health crisis on the job market and on the wages of the 1940 to 1980 generations.

FRANCE, SOCIAL PROFILE (NOV. 2021)

The latest edition addresses innovative research topics,

such as "multiple-property owner" households.

COMPANIES IN FRANCE (DEC. 2021)

The hospitality industry, which was particularly badly affected by the health crisis, is the subject of an in-depth study.

SECURITY AND SOCIETY (DEC. 2021)

Designed in partnership with the *Service statistique*

ministériel de la sécurité intérieure (SSMSI — French Ministerial Statistical Department for Internal Security) and the *Service statistique ministériel de la Justice* (SDSE — Division of Statistics and Studies of the French Ministerial Office of Justice Statistics), this unprecedented research provides an overview of the understanding of crime and how it is dealt with by the justice system.



REACHING OUT TO ALL AUDIENCES

DEVELOPING YOUNG PEOPLE'S STATISTICAL LITERACY AND INCREASING TEACHER AWARENESS

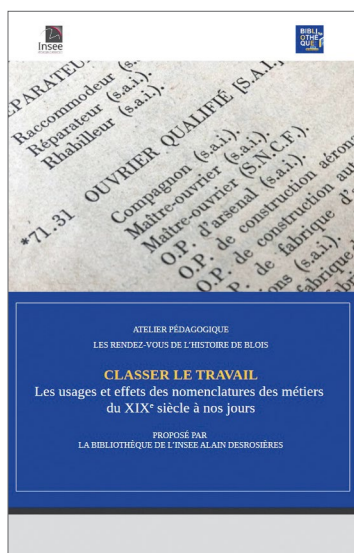
One of INSEE's objectives is to give young people the tools to understand the world around them and help them to decipher the data while developing critical thinking skills.

Developing young people's statistical literacy

In 2021, the institute once again organised the national section of the European Statistics Competition, in which 90 French high-school classes took part. It also carried out activities aimed at raising students' awareness of its research and, more specifically, of the pitfalls to avoid when interpreting it. The Auvergne-Rhône-Alpes division also gave a presentation on this subject to Master's 1 and 2 students of sociology at Clermont-Ferrand University. In Réunion, Sébastien Seguin, Head of the Studies and Dissemination Department, also spoke on the topic of "Understanding statistics to keep yourself and others informed" to journalism students at the island's university: "In order to help future data professionals avoid traps in interpretation", he explained, "it is essential to familiarise them with statistical techniques and concepts, at least those used with complex subjects such as measuring poverty or unemployment. Combating fake news is an area of focus for us and it is entirely appropriate to provide the keys to understanding INSEE results both to young people and to future journalists in order to achieve this."



Since its launch in August 2018, *Pour l'Éco*, a magazine aimed in particular at high-school pupils and young students, their families and teachers, has seen itself as a tool for "economic education". Pursuing its ambition of making its data and studies available to as many people as possible, it was a natural choice for INSEE to enter into a collaboration with the magazine in November 2021. Each month, the institute contributes content either in the *Le coin des chercheurs* – En data section ("The researcher's corner – In data") or in the *En graph* ("In graph") section of the main feature.



Informing and engaging teachers

Who better than teachers to share good economic benchmarks with pupils? With this in mind, INSEE is

increasing its activities directed at teachers. In 2021, at the national level, the Ministry of National Education, in partnership with INSEE and Banque de France, organised the first National Training Plan (NTP) seminar, entitled "Using statistical, socio-economic and financial data in education". The objective was to help academy inspectors to create relevant training programmes for teachers on this subject.

In October, the INSEE library designed a workshop and conference on the history of socio-professional classifications at the "Les Rendez-vous de l'histoire" in Blois, a very popular event with teachers. This workshop with historians Agnès Walch Mension-Rigau and Claire Judde, and sociologist Thomas Amosée provided an opportunity for teachers to share ideas on communicating and constructing figures, and how to respond to students who doubt official sources. Information events also took place at the regional level, such as in Normandy for the Semaine des mathématiques ("Mathematics week"). INSEE presented some statistical methods used in data collection, processing and analysis to some 30 mathematics teachers at the academy by videoconference.

EXTERNAL PERSPECTIVE



HUGO TRAVERS
JOURNALIST AND
FOUNDER OF
HUGODÉCRYPTE

In your opinion, what explains the success of your channels with young people? The entertaining format? Or the serious and factual substance?

The success of HugoDécrypte among young people is due to the mission of accessibility that we set ourselves. The goal was to make sure that young people, no matter their trajectory or whether or not they have a past interest in the news, are able to understand and examine major news topics in depth through our content. This involves writing, reinventing codes and approaches, but also the method, with a substantial social media presence and constant creativity in inventing tomorrow's information content.

Informing public debate and providing reliable data, particularly to young people, are key objectives for INSEE. What do you think is the biggest challenge in keeping 15-25-year-olds better informed?

First of all, it's important to get young people interested in the news. For example, our TikTok account has one of the largest numbers of followers in France, even though it deals exclusively with often very serious current events. The major challenge is to learn new ways of talking to this generation, whose daily lives are often shaped by social media. It is the role of social media channels such as HugoDécrypte, as well as more "traditional" media and institutes like INSEE, to renew their codes.

NEW WAYS OF ACCESSING INFORMATION

INSEE is increasing the number of ways it disseminates and communicates information: after starting its blog in 2020, in 2021 the institute developed a number of digital tools and improved the way it presents its data and analyses in its publications.

Launch of the INSEE mobile app

In July 2021, INSEE released its first smartphone app, INSEE Mobile. Designed to reach an audience with little knowledge

of the institute, the app can be used to easily find out information on the French economy and society through interactive, eye-catching and entertaining content.

After downloading it from the App Store or Google Play, the app invites users to explore data and publications from INSEE and the *Service Statistique Public* from the point of view of six issues: population, economy and

companies, territories and the environment, living conditions, employment and income. Each presents a selection of indicators and news as well as fun content such as quizzes or "true or false" questions, which can be used to test your knowledge on key figures or to challenge your friends. The app also allows each user to compare themselves (in terms of age, sex, wage etc.) to the French population using a comparison function and to access services like calculating a rent increase or spousal maintenance.

A multimedia advertising campaign accompanied the release of the app and included the rollout of sponsored posts and videos on social media and involvement from influencers.



The app in figures

53,000

DOWNLOADS

RATED 4.8

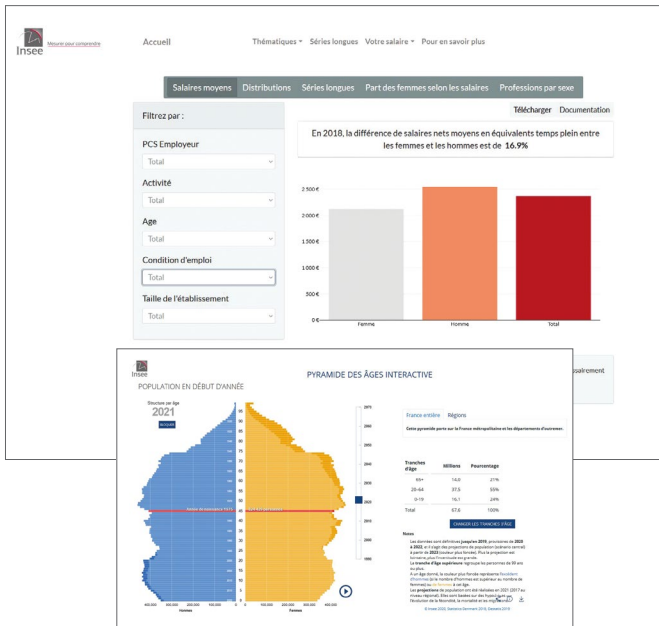
ON THE APP STORE AND
4.7 ON GOOGLE PLAY

900+

REVIEWS

1.2 MILLION

SCREENS VIEWED



Two examples of interactive data visualisation tools introduced in 2021: private sector wages and the age pyramid.



BIBLIOTHÈQUE NUMÉRIQUE
DE LA STATISTIQUE PUBLIQUE

Official Statistics and its digital library

Where can you find national and regional publications from INSEE, 11 Services Statistiques Ministériels

(Ministerial Statistical Offices — MSOs) and the *Conseil national de l'information statistique* (National Council for Statistical Information — CNIS), all in one place? The answer is a single address as of 21 September: www.bnspp.insee.fr/bnspp/en/. The *Bibliothèque numérique de la statistique publique* (Digital Library of Official Statistics — BNSP), a digital platform run by INSEE in partnership with the *Bibliothèque nationale de France* (French National Library — BnF), collects, stores and serves up all Service Statistique Public (Official Statistical Service) publications. Specifically, this means that over 38,000 documents dating from the 19th century to the present day, produced by INSEE and its partners, are now accessible to all.

The BNSP brings together complete collections, adding the oldest digitalised publications to the latest publications available on its partners' websites. Collections can be explored by geographic area, by period or even by topic. In addition, the BNSP grants access to documents from Gallica, the BnF's digital library, which has amassed a total of eight million documents to date.

Informing the right way

Releasing clear, comprehensible and readable figures, data and analysis is a priority for the INSEE teams in charge of publications. This first requires training authors, mostly professional statisticians, and their efforts in writing their studies so that they can be read by diverse audiences, even though the methods and results of their work are complex and sophisticated. In addition, having a sound method of editorialising the information, standardising the way it is presented and simplifying access to data on INSEE's website also ensure that this goal is achieved.

This led to the readers of INSEE publications being offered new ways to access certain content in 2021. As an example, there is now an infographic section when "Insee Références" publications are posted online, the French economy dashboard has been streamlined to facilitate more direct information, many more interactive data visuals have been added to help users view search results according to their data filters or parameters.

And the INSEE library has a new website

The INSEE library, christened the *Alain-Desrosières Library* in 2021 in honour of the INSEE statistician and sociologist whose work on the social history of quantification is internationally recognised, is both a documentation centre and a heritage library, with collections dating back to the 18th century. Its collections have now been digitised and are also available at the BNSP. The library is open to INSEE staff and the general public alike. In May 2021, the library launched its new website, <https://bibliotheque.insee.net>, which can be used to keep up with the library's news and to browse the catalogue of available publications in a more intuitive way.

ENABLING ACCESSIBILITY OF SERVICES AND TOOLS

Since the launch of INSEE's *Réseau accessibilité numérique* (Digital Accessibility Network, RANI) in November 2019, the institute has been working on making its tools and services accessible. Spotlight on activities in 2021.

Simplified interactions for people with a hearing impairment

In September 2021, an icon representing an ear was added to the navigation bar on insee.fr, next to the Help section.

This icon provides access to the new digital service that uses the Acceo platform for people with a hearing impairment who wish to contact INSEE. Clicking on this icon from a computer, tablet or smartphone takes the user to a page where they choose the means of communication: sign language, instant transcription of speech or complete French spoken language. A member of Acceo then acts as an interpreter between the user and the INSEE representative.

A widely disseminated approach for and to officers

While the main purpose of the RANI is to support INSEE's digital projects as well as to implement tools

and training, its *raison d'être* is also to provide an internal means of communication. It is essential to raise awareness among all INSEE officers about the importance of digital accessibility for all. There were two key endeavours in 2021. The first was the distribution to officers of newsletters on best practices and the progress of work on digital accessibility. The second involved the provision of the first digital and accessible version of the internal information magazine.

Two fully accessible services according to the *Référentiel Général d'Amélioration de l'Accessibilité* (General Accessibility Improvement Framework, RGAA) were launched on insee.fr in 2021: the SIRENE status notice for companies and the remote authorisation procedure to grant access to public services that use ProConnect. The *Tableau de bord de l'économie française* (Dashboard for the French Economy), first released in an interactive format in 2021, continues to improve in terms of accessibility, including graph data being made available as accessible tables.



POOLING AND BUILDING SHARED STATISTICS

PROMOTING THE EXCHANGE OF NATIONAL BEST PRACTICES

To keep on improving its information input to the economic and social debate in France, INSEE's Regional and Inter-regional Divisions and Directorate-General are actively involved in exchanging methods and best practices, with each other and with local and national partners.

Improving coordination of public data stakeholders

In 2021, INSEE carried out several projects with a view to improving coordination of national data production. The renewal of the partnership with the Chambers of Notaries of Grand Paris on the production of old housing price indices for the Île-de-France region is a good illustration.

Regional and inter-regional divisions have been particularly active in collaborative projects. INSEE in Guadeloupe, for example, met for the first time led by the Secretariat-General for Regional Affairs, a wide range of public sector bodies producing data such as the Department of Economy, Employment, Work and Solidarity, *Pôle em-*

ploi (the French employment agency) and the Regional authority in order to establish a lasting framework for collaboration. The framework has two key pillars: standardising the dissemination of data on the economic climate to increase the visibility of publications and carrying out shared diagnostic assessments.

The Réunion-Mayotte inter-regional office has organised two webinars on the immediate impact of the health crisis on the island, to feed into research for the project on *Comptes économiques rapides pour l'Outre-mer* (Overseas rapid economic accounts, CEROM). INSEE is one of seven partners on this project.

Cooperating with the research and innovation sectors

INSEE is cultivating close ties with key players in the world of research and innovation. The original partnership that led to the founding in 2021 of the research chair in *Mesures de l'économie, nowcasting – au-delà du PIB* ("Economic measures, nowcasting – beyond GDP") at the PSE-École d'économie de Paris (Paris School of Economics — PSE) is an example of those ties. This chair is the result of the collaboration between INSEE, the start-up QuantCube Technology, which provides macroeconomic forecasts based on big data and artificial intelligence, international asset management company Candriam, *Société Générale* and PSE. It intends to contribute to the advancement of methods in economic statistics. How? By promoting the utilisation of new sources and developing very short-term forecasting tools (nowcasting), as well as by pursuing discussions initiated by the Sti-

Sharing source code



In 2021, INSEE joined the collaborative site GitHub, designed to unify and share source code for development projects, software and applications. The institute uses GitHub as a hosting platform for its open-source projects. It has two accounts: @InseeFr to release code for operational projects and @InseeFrLab for more experimental projects or the code for a study. As an authority that uses open-source software, INSEE is committed to sharing advances with developer communities (Java and JavaScript) and those in the scientific community (R and Python).

glitz Commission on enhancing the statistical measurement of economic performance and well-being (Beyond GDP).

ACTIVELY CONTRIBUTING TO EUROPEAN OFFICIAL STATISTICS

In addition to coordinating French official statistics, INSEE is part of the European statistical framework to enhance its strengths and benefit from the best practices of its peers. The objective for the European statistical system is twofold: to produce comparable statistics and to inspire confidence in European official statistics.

Preparing to chair the Council of the European Union's Working Party on Statistics

The French Presidency of the Council of the European Union in the second quarter of 2022 has led to INSEE

chairing the Working Party on Statistics of the Council of the European Union, chaired by its Director-General, Jean-Luc Tavernier. This cross-sectional body negotiates European statistics regulations. 2021 was the year for preparing to chair this important body. "At INSEE, the Statistical Coordination and International Relations department became particularly active as of September", explained Hervé Piffeteau, Head of INSEE's International Coordination division. In order to lead the numerous ambitious projects, the team expanded to do preparatory work with INSEE's various divisions as well as the *Direction Générale du Trésor* (Directorate-General of the Treasury, DGT) and the Ministry of Finance's Secretariat-General, which are coordinating the French Presidency of the Council of the European Union within the ministry." Matters discussed and approved to make this chairmanship a success include a dedicated budget, the priorities of the *Service Statistique Public* (Official Statistical Service), regulations to be submitted for negotiation and communication tools and operations.

As regards regulations, INSEE and the *Services Statistiques Ministériels* (Ministerial Statistical Offices — MSOs) have prepared to take the



From left to right: (front) Jean-Pierre Cling, Anne Coÿne, Jean-Luc Tavernier, Sylvie Lagarde; (back) Clément Delecourt, Antoine Neyen, Michel Isnard, Claude Leroy-Themeze, Pierre Bayart, Hervé Piffeteau.

lead in negotiations on several European Statistics legislative texts, such as the revision of the ESA 2010 (European System of Accounts) regulation, along with the negotiations on the SAIO (Statistics on Agricultural Input-Output) framework regulation, which have since taken place in trilogue (a phase of the European legislative process involving negotiations between three parties: the European Commission, the Council of the European Union and the European Parliament). Other draft regulations on data with strong implications for statisticians are also on the table, but led by the Telecommunications group of the Council of the European Union. These include the ePrivacy Regulation and the Data Act. The discussions on revising the European Statistical Law initiated by Eurostat were also at the heart of the preparations.

2/3

OF THE STATISTICS PRODUCED AT INSEE WERE COVERED BY A EUROPEAN REGULATION IN 2021.

Developing multi-modal surveys within European official statistics

Which methodological or operational investments related to data collection need to be made at the

European level over the next few years to foster the development of multi-modal surveys (face to face, Internet, telephone)? A European working group led by INSEE explored this topic in 2021 in the light of the experience acquired by Member States during the Covid-19 crisis. Comprising representatives from the methodological and social spheres of six European national statistical institutes, this think-tank produced a position paper issued in 2022 that supports multi-mode data collection as an effective and relevant way of conducting household surveys. This position paper recommends that various actions be taken by Member States and Eurostat to remove the obstacles preventing the rollout of these practices.

Taking part in data sharing in cross-border regions

The cooperation activities carried out by INSEE can also fit into a more bilateral framework, including in Europe. INSEE Hauts-de-France took part in the “*Compétences sans frontières*” (Skills without borders) project aimed at striking a better balance between supply and demand for jobs on both sides of the Franco-Belgian border, for which the institute produced three studies on key sectors: the agri-food industry, the textile industry and the construction industry. Several regional divisions are working closely with Switzerland. Within the Cross-border Statistical Observatory, INSEE Auvergne-Rhône-Alpes and the Statistical Office of the canton of Geneva worked together on a publication on higher education in the Franco-Vaud-Geneva region. Similarly, within the Observatoire statistique transfrontalier de l’Arc jurassien (Cross-border Statistical Observatory of Jura Arc — OSTAJ), INSEE Bourgogne-Franche-Comté produced several studies on the effect of the Covid-19 crisis on the cross-border region in collaboration with the statistical services of Neuchâtel and Vaud.

Ensuring a high degree of compliance with European best practices

The quality of the European Statistical System is defined in the European Statistics Code of Practice enacted in its first edition in 2005. The code also serves as a guide for regular European peer review visits. In 2021, France hosted one of these visits for the third time in its history. The result was very positive! The report showed a very high level of compliance with the Code of Practice.



INTERNATIONAL ACTION

Despite the difficulties that arose from the health crisis, videoconferencing allowed INSEE to keep pursuing its international activities in 2021. There were two major objectives for these activities: participation in French technical support for development and the influence of French statistics as part of international research.

Enhancing the output of national statistics institutes in Africa

In 2021, the second Pan African Statistics Programme (PAS2) was launched. Funded by the European Union and managed by Eurostat, this project aims to support African integration by producing and disseminating high-quality statistics. PAS2 is a continuation of the first PAS programme to which INSEE contributed as part of a consortium led by Expertise France between 2016 and 2021. INSEE, in partnership with other European national statistical institutes (NSIs) (in Denmark, Spain, Finland and Norway), is coordinating a project devoted to economic statistics and business directories. It is the first time that Eurostat has approved direct subsidies for NSIs for international technical support projects.



From left to right: Oumar Dia and Awa Diop (Agence nationale de la Statistique et de la Démographie du Sénégal – National Agency of Statistics and Demography, ANSD), Dominique Francoz (INSEE), Nina von Lachmann-Steensen (Danmarks Statistik), Dr Allé Nar Diop (Director-General of the ANSD), Meïssa Ndour (ANSD).

EXTERNAL PERSPECTIVE



**PAUL-HENRI
NGUËMA
MEYE**
DIRECTOR-
GENERAL OF
AFRISTAT

What circumstances led to the launch of the series of webinars organised jointly by Afristat, INSEE, Paris21 and the United Nations Economic Commission for Africa?

During the crisis, in 2020, there was an unprecedented increase in demand for real-time data to inform policy decisions that would save lives. However, in many low-income countries, such data were mainly generated by

statistical surveys that were skewed due to social distancing measures. The objectives of these webinars were therefore to inform and train managers for the national statistical systems in the different methods of disseminating high-quality data despite the restrictions; and to foster the sharing of experiences between countries and other organisations that had already worked with innovative methods or alternatives, and those seeking solutions appropriate to their realities.

Which pressing needs did these webinars address?

The subjects discussed touched on the quality of statistical output and their production processes (data

collection, processing etc.), along with their subsequent dissemination. With regard to dissemination, discussions have demonstrated the responsibility of national statistical institutes in combating misinformation, which may have implications in times of crisis, and the importance of establishing a dialogue between the media and official statistics producers.

What did you take away from the collaboration between the four structures?

It showed that good coordination is effective. Each partner contributed to the webinars, which considerably enhanced the content of the topics discussed and helped find qualified participants.

Promoting more efficient and transparent public management in Morocco

2021 was a year of framing and preparing for the new Hakama II project with Morocco, in which INSEE is a stakeholder.

Hakama II is providing "Technical support for the implementation of more effective and transparent public management under the organic law on the Finance Act". Funded by the European Union to the tune of €3.6 million (2021-2023), it was implemented by Expertise France in the form of a contribution agreement. INSEE was asked to pilot the project's statistical section, aimed at developing the capabilities of the High Commission for Planning (HCP), the Moroccan institute mainly responsible for the production of statistics.

The scale of the project and diversity of subjects involves a team of INSEE agents: a lead expert and thematic experts are consulted for each component. The team comprises members of the directorate-general and regional divisions of Pays de la Loire and Bourgogne-Franche-Comté. In 2021, 27 remote technical meetings were organised on three topics brought by INSEE. Four coordination meetings with HCP and the Expertise France project team took place via videoconference.

The three objectives of the Hakama II statistical section



Strengthening the technical capabilities of HCP's regional offices;



Guiding the HCP in compiling pilot mixed-mode surveys and putting them into widespread use;



Overhauling the system for producing business statistics.



The first steering committee of the Hakama II project was held in Rabat on 12 November 2021.

Sharing French expertise at international events

Despite the health conditions, INSEE was able to attend several international events. The 52nd session of the United Nations Statistical Commission (the highest authority in the global statistical system, attended by representatives from the national statistical institutes of the 193 Member States each year since 1947) was held virtually. As such, INSEE statisticians were able to more easily take part in the events running parallel to the discussions.

Some 20 experts from INSEE also spoke at the symposium on new statistical techniques and technologies. Organised every two years by Eurostat, it provides a series of international scientific sessions devoted to the impact of new technologies on statistical data collection, output, processing and dissemination systems. The 2021 edition of the European Big Data Hackathon ran alongside this event, with INSEE finishing in fourth place.



INSEE'S RESOURCES AND ORGANISATION

INSEE'S MISSIONS

In order to carry out its missions of collecting, producing, analysing and disseminating data on the French economy and society, INSEE relies on an organisational structure and human and material resources that span the French territory.

Establishing economic diagnostic assessments

INSEE regularly performs diagnostic assessments and makes forecasts on France's economic situation.

It measures the unemployment rate every quarter, estimates household consumption and gross domestic product as well as calculating the consumer price index each month in order to measure inflation.

Understanding companies

INSEE collects data on companies' structure (size, sector etc.) and their activity (order book, investment etc.). It also conducts thematic surveys: energy consumption, new technologies, innovation etc.

Observing changes in society

INSEE conducts statistical surveys of households and individuals. Regular surveys measure changes in major economic and social conditions (consumer confidence, employment, information technologies etc.), and structural surveys, carried out every five to ten years focus on certain behaviours or phenomena (daily life and health, housing, resources and living conditions etc.). Administrative files are used to obtain data without relying on surveys that are expensive for authorities, particularly on employment, wages and income distribution.

Carrying out the population census

Each year, INSEE oversees the population census survey. This provides information on demographic changes in the population, helps in assessing the resulting needs in terms of infrastructure and determines the allocation of government funding to municipalities.

Describing and analysing regions and territories

Thanks to its regional offices, INSEE is developing detailed knowledge of the French territories. The INSEE regional divisions often produce studies in partnership with local public stakeholders, to whom they also provide advice and expertise when implementing public policies.

Managing large directories and registers

INSEE is bound by law to keep three national directories and registers up to date: the *répertoire national d'identification des personnes physiques* (National Directory for the Identification of Natural Persons, RNIPP), the *répertoire électoral unique* (Single Electoral Register, REU) and the *système informatisé du répertoire des entreprises et des établissements* (Digital System of the National Directory of Businesses and Establishments, SIRENE). INSEE also contributes to the Legal Entity Identifier (LEI) global register, which issues this identifier for French legal entities.

Disseminating its statistics and studies

INSEE is not only a statistics institute: its remit includes economic and social studies. Topics are selected to meet the needs of public and private sector decision-makers and to respond to public concerns as best as possible. Active communication seeks to ensure that studies are disseminated as widely as possible, including in the media and via the institute's digital communication tools. A wide range of freely accessible publications on insee.fr meet the needs of the various users.

Perfecting its methods and assessing quality

INSEE is constantly seeking to improve its methods; it tests out new data and develops statistical processes to take full advantage of the said data. It also strives to optimise the data collection protocols for its surveys. These activities are carried out with the Services Statistiques Ministériels (Ministerial Statistical Offices — MSOs) as well as in partnership with other organisations.

Contributing to European and international statistics

INSEE works with the European Statistical System, which aims to develop, produce and disseminate statistics that are comparable between the countries of the European Union. It also contributes to the creation of international statistics by cooperating with international agencies and providing expertise to national statistical institutes.

INSEE'S BUDGET

INSEE's total budget is

€ 420 MILLION

under the initial Finance Act of 2021



€ 369 MILLION

STAFF BUDGET



€ 41,2 MILLION

OPERATING BUDGET



€ 5,3 MILLION

INTERVENTION BUDGET



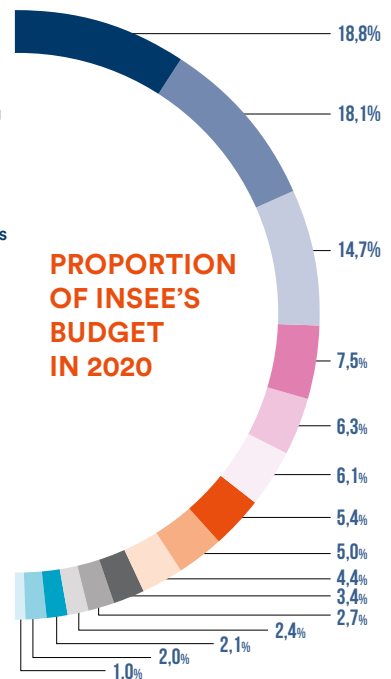
€ 4,5 MILLION

INVESTMENT BUDGET

DISTRIBUTION OF THE BUDGET ACCORDING TO THE FULL COST OF INSEE'S MAJOR OPERATIONS

OPERATIONS

- Population census
- Household surveys
- Regional activities (including regional studies and dissemination)
- Business registers and directories
- Company structural statistics
- Strategic management, coordination, international
- National dissemination
- Short-term company statistics
- Consumer price index
- Administrative statistics on employment and income
- National accounts
- Civil status and electoral register
- National studies
- Thematic company surveys
- Short-term economic analysis



THE WOMEN AND MEN AT INSEE

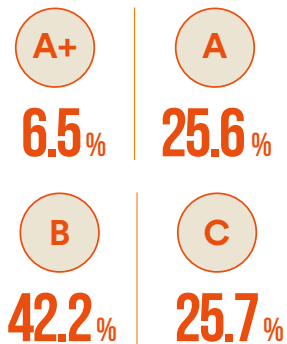
INSEE's resources are distributed between the head office, located in Montrouge and the Metz Statistical Centre, the regional divisions and the national IT centres and services. Overseas, the regional divisions take the form of inter-regional divisions supported by regional services.

Staff in figures

5,084 OFFICERS

INCLUDING 3,663 THROUGHOUT THE 15 REGIONAL DIVISIONS

DISTRIBUTION OF TOTAL STAFF BY GRADE



52.5%

OF STAFF UNDER 50 YEARS OLD

57%

OF TOTAL STAFF ARE FEMALE



OF EXECUTIVES ARE FEMALE

Directorate-General organisation chart

(as at 1 June 2022)



JEAN-LUC TAVERNIER
DIRECTOR-GENERAL



LIONEL JANIN
CABINET DIRECTOR



PASCAL RIVIÈRE
HEAD OF THE INTERNAL
AUDIT OFFICE



KARINE BERGER
SECRETARY-
GENERAL



JEAN-SÉVERIN LAIR
DIRECTOR OF THE
INFORMATION
SYSTEM



SYLVAIN MOREAU
DIRECTOR OF
BUSINESS STATISTICS



CHRISTEL COLIN
DIRECTOR OF
DEMOGRAPHIC AND
SOCIAL STATISTICS



NICOLAS CARNOT
DIRECTOR OF
ECONOMIC STUDIES
AND REPORTS



ALAIN BAYET
DIRECTOR OF
DISSEMINATION AND
REGIONAL ACTION



SYLVIE LAGARDE
DIRECTOR OF
METHODOLOGY,
STATISTICAL
COORDINATION AND
INTERNATIONAL
RELATIONS

CHRISTELLE MINODIER
Head of the
Coordination of
Cross-Cutting
Initiatives Unit

PATRICK REDOR
Head of the Legal
Affairs and
Litigation Unit

**NICOLAS
VANNIEUWENHUYZE**
Head of the
Financial Affairs
Department

**JEAN-CHRISTOPHE
FANOUILLET**
Head of the Living
and Working
Conditions
Department

FRANÇOIS HADA
Head of the Human
Resources
Department

CHANTAL VILLETTE
Head of IT
Production and
Infrastructure

AXELLE CHAUVET
Head of the
Information
Systems
Development
Department

LOÏC MIDY
Head of the
Innovation and
Information System
Strategy Unit

MARIE LECLAIR
Head of the
Registers,
Infrastructure and
Structural Statistics
Department

ALAIN JACQUOT
Head of the Short-
Term Statistics
Department

CHRISTINE CHAMBAZ
Head of the
Sectoral Economic
Outlooks
Department

SYLVIE LE MINEZ
Head of the
Demographic and
Social Studies Unit

VLADIMIR PASSERON
Head of the
Employment and
Earnings
Department

VALÉRIE ALBOUY
Head of the
Household
Resources and
Living Conditions
Department

MURIEL BARLET
Head of the
Demography
Department

AURÉLIEN DAUBAIRE
Head of the
Consumer Prices
and Household
Surveys
Department

JULIEN POUGET
Head of the
Department of
Short-Term
Economic Analysis

SÉBASTIEN ROUX
Head of the
Economic Studies
Department

GUILLAUME HOURIEZ
Head of the
National Accounts
Department

**FRANÇOIS
GUILLAUMAT-TAILLIET**
Head of the
Secretariat of the
National Council
for Statistical
Information

**HÉLÈNE
ERKEL-ROUSSE**
Head of the
Documentary
Resources and
Archiving Unit

CHRISTINE LAGARENNE
Head of the
Editorial Content
Department

MICHEL DUÉE
Head of the
Regional Action
Department

CÉLINE ROUQUETTE
Head of the Public
Communication
and Services
Department

PATRICK SILLARD
Head of the
Department of
Statistical Methods

MYLÈNE CHALEIX
Head of the Quality
Unit

JEAN-PIERRE CLING
Head of the
Statistical
Coordination and
International
Relations
Department

ÉLISE COUDIN
Head of the SSP
Lab Unit

INSEE IN THE REGIONS



NORMANDY REGIONAL DIVISION

DIRECTOR : PHILIPPE SCHERRER

306 OFFICERS

BRITTANY REGIONAL DIVISION

DIRECTOR : ÉRIC LESAGE

158 OFFICERS

PAYS DE LA LOIRE REGIONAL DIVISION

DIRECTOR : ARNAUD DEGORRE

348 OFFICERS

WEST INDIES-FRENCH GUIANA INTER-REGIONAL DIVISION

DIRECTOR : JEAN-BAPTISTE HERBET

217 OFFICERS

BAIE-MAHAULT

FORT-DE-FRANCE

CAYENNE

SAINT-DENIS

MAMOUDZOU

CENTRE-VAL DE LOIRE REGIONAL DIVISION

DIRECTOR : FRANÇOIS-PIERRE GITTON

184 OFFICERS

NOUVELLE-AQUITAINE REGIONAL DIVISION

DIRECTOR : DANIEL BRONDEL

312 AGENTS

RÉUNION-MAYOTTE INTER-REGIONAL DIVISION

DIRECTOR : LOUP WOLFF

138 OFFICERS

OCCITANIE REGIONAL DIVISION

DIRECTOR : CAROLINE JAMET

301 OFFICERS



JOBS AND TRAINING AT INSEE

Jobs

INSEE draws on a variety of skills covering the following statistical areas:



- **statistical output:** methodology, design and management of statistical operations.



- **statistical analyses and studies:** national statistical studies, economic reports and short-term economic analyses.



- **regional activities, public relations and coordination:** management of relations with public sector stakeholders in the region, dissemination of publications and data, responding to user requests, coordination.



- **IT:** IT development and production, management and development of the institute's information system and cybersecurity.



- **support functions:** documentation and/or archiving management; human resources management; financial management; subject matter expertise (law, communication, public procurement, prevention); management secretariat and support; and logistical support.



- **data collection:** INSEE relies on a network of specialised survey interviewers for both household and company surveys.

Ongoing training

In order to promote the creation of diversified and constructive career paths, INSEE human resources offer public officers enhanced training and individual support.

Key figures 2021

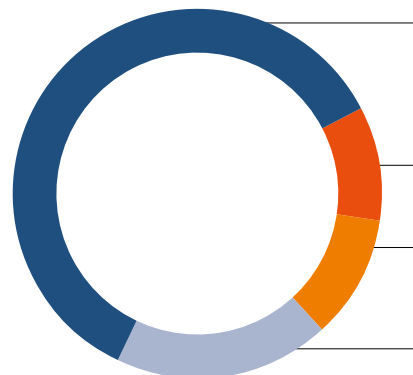
78%

OF OFFICERS ATTENDED AT LEAST ONE TRAINING COURSE

EACH OFFICER RECEIVED

6.6 DAYS OF TRAINING ON AVERAGE

BREAKDOWN OF TRAINING HOURS BY TYPE



61%

Non-IT advanced training (output and studies, languages, management etc.)

10%

IT advanced training

11%

Preparation for competitive exams

19%

Adaptation

Competitive exams, schools and training centre

Competitive exams

INSEE primarily recruits its officers through competitive exams 18 internal or external competitive exams covering 5 grades for onboarding with INSEE as a survey interviewer, senior administrative assistant, auditor, statistical officer or administrator.

INSEE's training centre

Founded on 1 February 1996 in Libourne in Gironde, the CEFIL is INSEE's training centre. Its main mission is to design and deliver basic training for administrative assistants, auditors and survey interviewers arriving at INSEE or promoted to a new unit. It is also responsible for designing remote training, hosting an integrated preparatory class ("Classe Prépa Talents") for the external competitive exam for auditors, and for organising and hosting national and international meetings and seminars.

The *Groupe des écoles nationales d'économie et statistique* (Group of National Economics and Statistics Schools, GENES)

INSEE is responsible for the technical oversight of the GENES, a public higher education and research establishment under the Ministry of the Economy. It comprises four entities:

- the *École nationale de la statistique et de l'administration économique* (National School of Statistics and Economic Administration, ENSAE), which trains administrators for the *Service Statistique Public* (Official Statistical Service) as well as statisticians and economists for the private sector;
- the *École nationale de la statistique et de l'analyse de l'information* (National School for Statistics and Information Analysis, ENSAI),

which trains the officers of the *Service Statistique Public* (Official Statistical Service) and statistical engineering, data processing and general economics executives for the private sector;

- the *Centre d'études des programmes économiques* (Centre for Economic Programme Studies, CEPE), which is a continuing professional development centre working both for the public and private sectors;
- *Centre de recherche en économie et statistique* (Centre for Economics and Statistics Research, CREST).

"Having been accepted for the 2021 external competitive exam for auditors at INSEE after 15 years in advertising, I am following a three-stage course. Each stage builds on the knowledge gained previously that is required for increasingly specific tasks. I first completed six weeks' training at the CEFIL, where I went over the basics and learned about INSEE's missions. The training programme fosters constant collaboration among fellow colleagues. I then joined the media office at Directorate-General for a four-month placement and in the summer of 2022 I will officially take up my new position".

BRUNO LERDOU

EXTERNAL COMMUNICATION TRAINEE AT INSEE

In October 2021, as part of its *Fragments de France* series, the newspaper *Le Monde* published an in-depth report on the work carried out by INSEE's survey interviewers in the context of the health crisis: *"Dans les pas des enquêteurs de l'Insee, au chevet de la France"*.

Publishing Director: Jean-Luc Tavernier

Editorial design and Editor-in-Chief: Carine Isambert

Editing: Valentine Fryson et Carine Isambert

Graphic design and layout: Citizen Press

Photo credits: p. 41: Jean-Marc Detienne; p. 5: Olivier Corsan/Le Parisien – Aujourd'hui en France; Getty images; INSEE.

Directly involved in producing this report (INSEE): Jean-William Angel, Emmanuelle Bascheri, Alain Bayet, Vincent Bernard, Nicolas Carnot, Mathilde Clément, Jean-Pierre Cling, Nathalie Cloarec, Christel Colin, Gaëlle Cordani, Sophie Destandau, Dominique Francoz, Ali Hachid, Fabrice Hillaireau, Lionel Janin, Sylvie Lagarde, Isabelle Le Blond, Hervé Le Grand, Marie Leclair, Sonia Lubin, Christelle Minodier, Sylvain Moreau, Jérôme Pujol, Claire Ravel, Isabelle Ravet, Céline Rouquette, Sébastien Roux, Marie-Josette Saintini, Marie-Claude Sanglan, Patrick Sillard, Michel Tamic, Frédéric Tardieu, Julien Valentino.

Acknowledgements

For their "external perspective": Philippe Aurain, Paul-Henri Nguéma Meye, Anne Postic, Hugo Travers.
For sharing their stories: Nicole Cadenel, Alette Cheptitski, Lionel Doisneau, Pierre Leblanc, Bruno Lerdou, Olivier Meslin and Mathias André, Hervé Piffeteau, Sébastien Seguin.

Printed in June 2022

Printed by: DupliPrint

Publisher: Insee – 88, avenue Verdier – CS 70058 – 92541 Montrouge Cedex, France

ISBN : 978-2-11-162357-6

Legal registration: July 2022



ANNUAL REPORT

2021